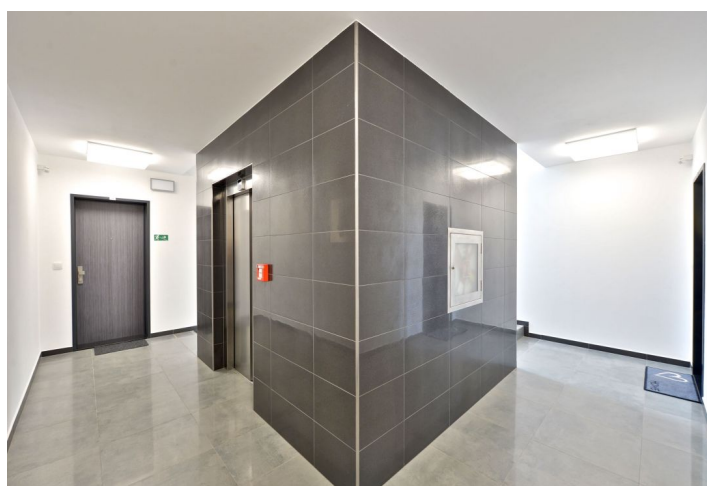
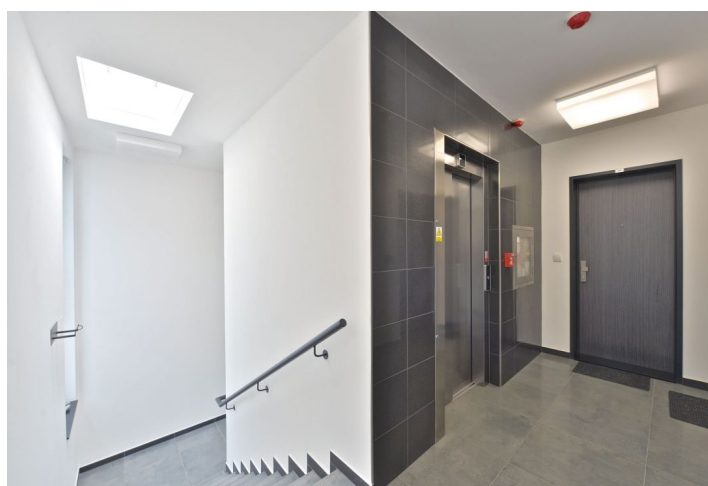




Apartment Studio (1+kk)

48 m², Prague 10, Vršovice, Donská

Rented





Apartment Studio (1+kk)

Rented

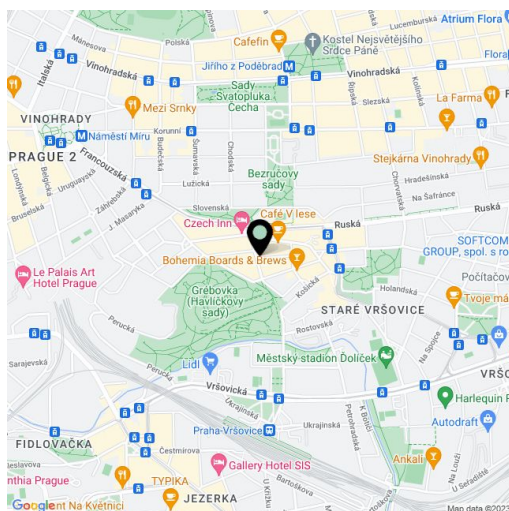
48 m², Prague 10, Vršovice, Donská

Total area	48 m²
Parking	Garage parking space included.
Garage	Yes
Cellar	Yes
PENB	B
Reference number	21164
Available from	Immediately

Furnished 1-bedroom flat on the 2nd floor of a recently built building with a lift and parking. Located on the border of Vinohrady and Vršovice neighborhoods, just two minutes from the Havlíčkovy sady park, with easy connection to the city center, two short tram stops from Náměstí Míru metro station with full amenities in the area.

The interior includes a spacious living room / bedroom with a fully fitted open kitchen and dining area, bathroom with tub and toilet, and entry hall.

Vinyl and tile floors, security entry door, built-in wardrobes, wooden triple glazed windows, remote control operated outdoor blinds, washer, dryer, dishwasher, microwave oven, video entry phone, Internet, alarm, central switch, cellar. Chip operated entrance to the building and lift. One garage parking space included. Common building charges CZK 2,550/month. Deposit for utilities CZK 1,800/month. The photos are taken from a similar apartment. Available from September 25, 2019.



* Area of the unit according to the Civil Code. The area consists of the sum total area of the entire unit bounded by perimeter walls.