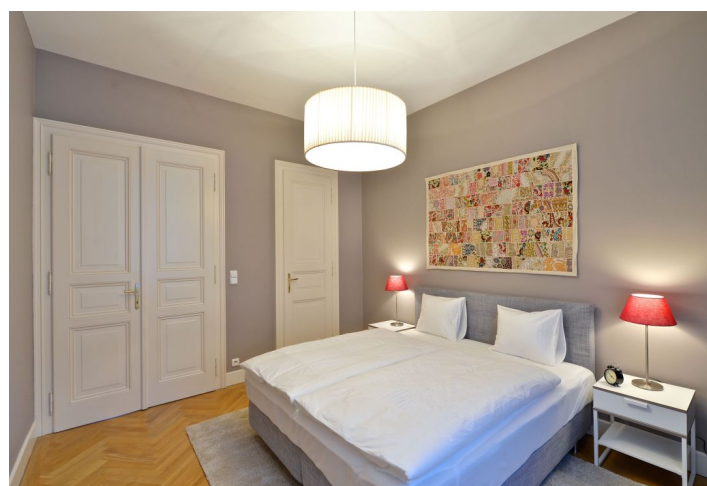




Apartment One-bedroom (2+1)

Rented

72.3 m², Prague 1, Nové Město, Truhlářská





Apartment One-bedroom (2+1)

Rented

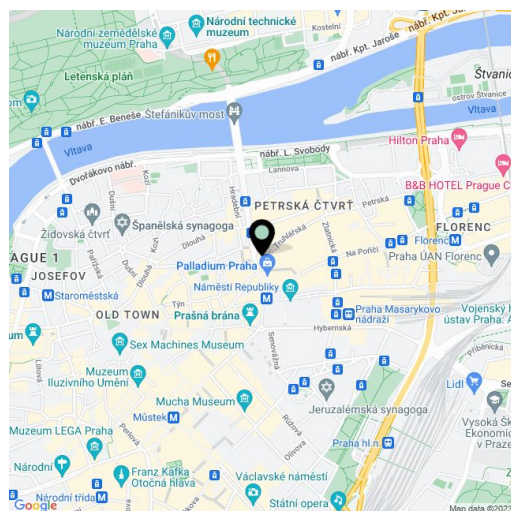
72.3 m², Prague 1, Nové Město, Truhlářská

Total area	72 m²
Parking	-
Cellar	-
Service price	Deposit for common building charges and utilities CZK 6,000/month for 1 person.
PENB	D
Reference number	21101
Available from	01.07.2026

Fully refurbished furnished apartment located on 2nd floor of a classic late 19th century building, superbly renovated with attention to detail and retrofitted with an elevator. Offering modern living standards, high-quality finishings, and a lively central location, the unit is located on a quiet street just steps from Republic Square, within walking distance of Old Town as well as Wenceslas Square. The surroundings offer many restaurants, cafes, clubs, and cultural venues. Shopping centers with supermarkets, medical services, or even a swimming pool are nearby. Excellent connections are provided by tram stops located just a few meters away, and the Florenc subway transfer station or the Náměstí Republiky station are also within easy walking distance.

The apartment has a fully fitted eat-in kitchen, a living room, one bedroom with a fitted walk-in closet and an en-suite bathroom with a bathtub and window, a separate toilet, a closet, and an entry hall.

Preserved original features, high ceilings, large windows, hardwood parquet floors and tiles, interior double doors, security entry door, dishwasher, toaster, kettle and Nespresso machine. TV with SAT reception, Wi-Fi Internet, washing machine, laptop-size safe.



* Area of the unit according to the Civil Code. The area consists of the sum total area of the entire unit bounded by perimeter walls.



Apartment One-bedroom (2+1)

Rented

72.3 m², Prague 1, Nové Město, Truhlářská

