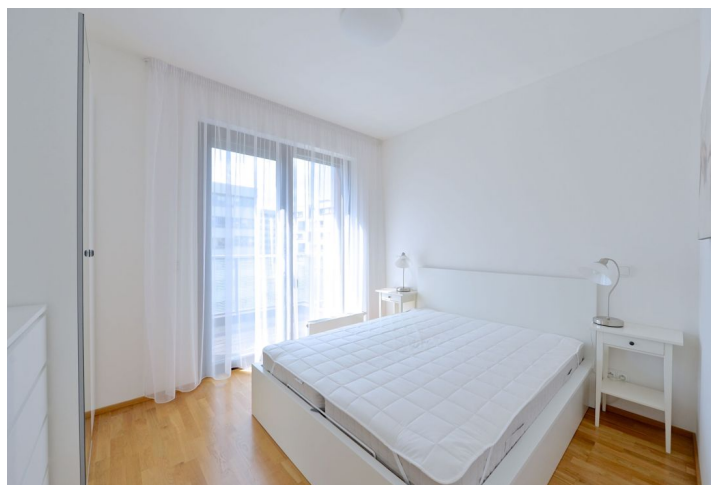
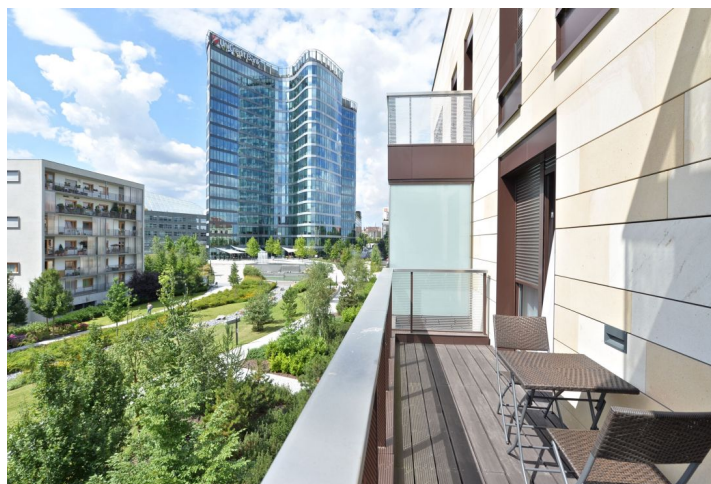




## Apartment One-bedroom (2+kk)

Rented

59 m², Prague 4, Michle, Baarova





## Apartment One-bedroom (2+kk)

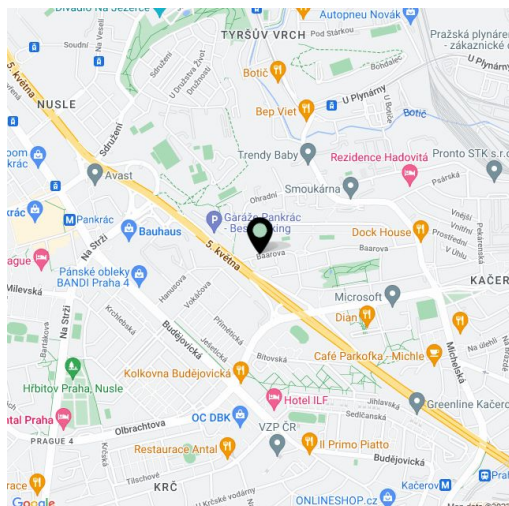
**Rented**59 m<sup>2</sup>, Prague 4, Michle, Baarova

Total area	67 m <sup>2</sup>
Floor area*	59 m <sup>2</sup>
Balcony	8 m <sup>2</sup>
Parking	Underground parking available at CZK 2500 per month.
Garage	Yes
Cellar	Yes
PENB	G
Reference number	20795
Available from	Immediately

Brand new bright 1-bedroom flat with an 8 m<sup>2</sup> balcony and views of the green park, situated on the fourth floor with lift in a new residential development with 24-hour reception, security, new park and underground parking. Location with full range of amenities, near the BB Centrum and Brumlovka multipurpose centers, with bus connections to Budějovická and Pankrác metro stations and quick access to the city center.

The interior includes living / dining room with a fully fitted open kitchen and balcony access, pantry, one bedroom also with balcony access, bathroom (bath tub with a shower screen, sink, washer, bidet, toilet), hall with storage, guest toilet, and entry hall with a built-in wardrobe.

New kitchen, new equipment and furnishings, wooden floors, security entry door, outdoor blinds, dishwasher, microwave oven, induction cooktop, built-in oven. TV, audio entry phone, 6.7 m<sup>2</sup> cellar. Chip entry to the building. One underground parking space available for CZK 2500/month. Common building charges (incl. reception), water and heating CZK 4271/month. Deposit for electricity CZK 500/month. Flat: 58.5 m<sup>2</sup>. Balcony: 8 m<sup>2</sup>. .



\* Area of the unit according to the Civil Code. The area consists of the sum total area of the entire unit bounded by perimeter walls.