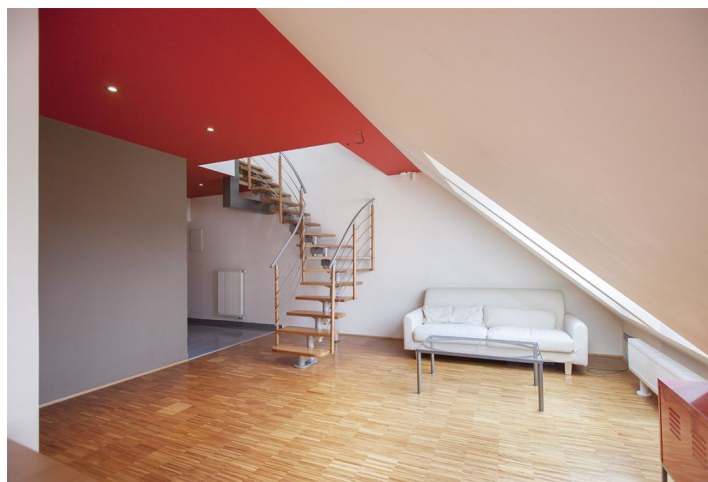




## Apartment Two-bedroom (3+kk)

Rented

125 m<sup>2</sup>, Prague 7, Holešovice, Přístavní





## Apartment Two-bedroom (3+kk)

**Rented**

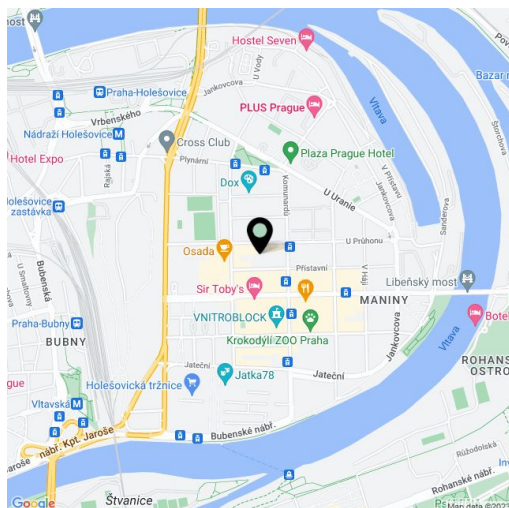
125 m², Prague 7, Holešovice, Přístavní

Total area	130 m²
Floor area*	125 m²
Balcony	5 m²
Parking	-
Cellar	-
PENB	G
Reference number	20764
Available from	Immediately

Comfortable 2 bedroom, 2 bathroom split-level attic flat with balcony and an additional lounge, situated on the fifth floor of a well kept residential building with a new lift. Located just one block from a tram stop, and only a few stops from the Palmovka and Vltavská metro stations. Quiet street in the rapidly developing Holešovice neighborhood with full amenities within easy reach and quick access to the city center.

The lower level features a lounge (or study) with built-in storage, and a bathroom with shower and toilet. The upper floor includes a fully fitted kitchen opening into the living room and dining area plus a balcony providing views of the green courtyard and the skyline beyond. There are two bedrooms, including the master bedroom with an en-suite bathroom (whirlpool tub, toilet).

Wooden floors and tiles, security entry door, built-in wardrobes, skylights, roller blinds, washing machine, dishwasher, microwave oven, alarm, safe, entry phone. Common building charges and water CZK 560/month for one person. Gas and electricity will be transferred to the tenant (around CZK 3000/month).



\* Area of the unit according to the Civil Code. The area consists of the sum total area of the entire unit bounded by perimeter walls.