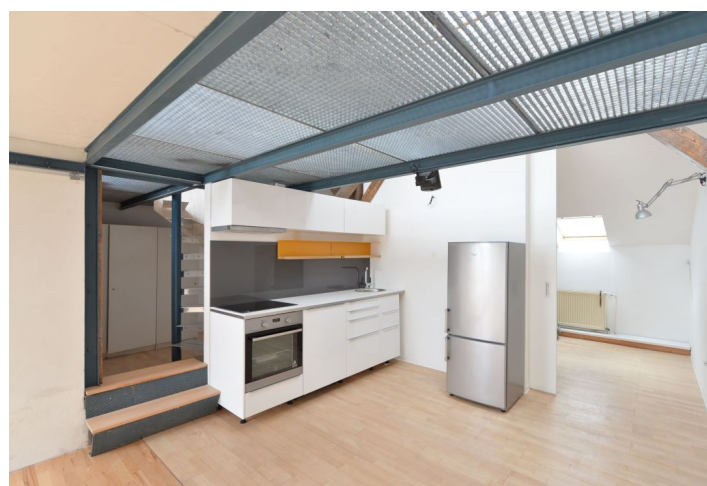
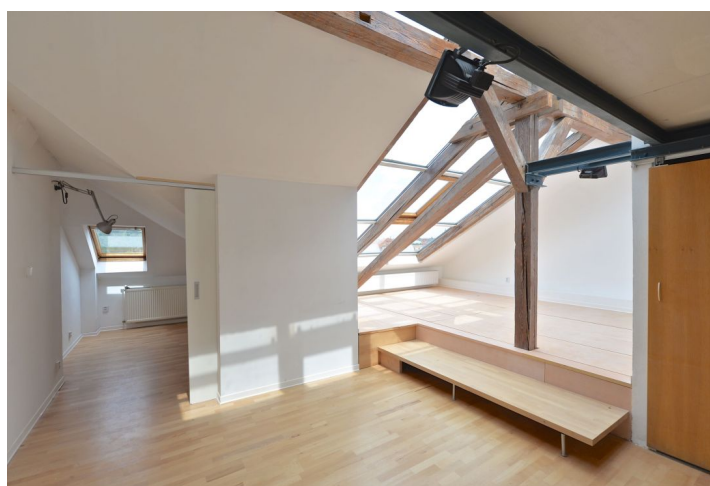




Apartment Two-bedroom (3+kk)

Rented

100 m², Prague 1, Malá Strana, U železné lávky





Apartment Two-bedroom (3+kk)

Rented

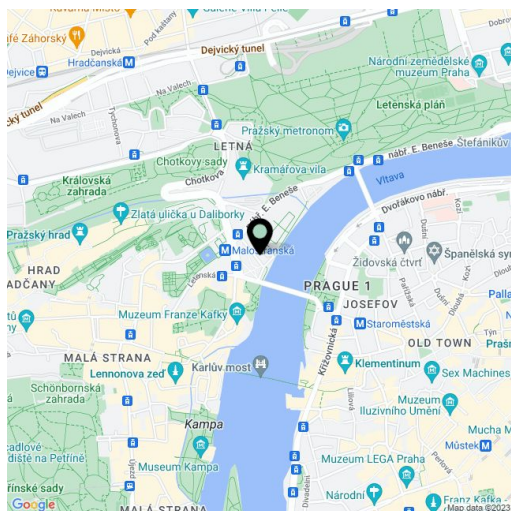
100 m², Prague 1, Malá Strana, U železné lávky

| | |
|------------------|-------------|
| Total area | 100 m² |
| Parking | - |
| Cellar | - |
| PENB | G |
| Reference number | 20554 |
| Available from | Immediately |

Boasting wonderful views of the Vltava River, the Charles Bridge and the National Theater, this is a newly refurbished 2-bedroom attic flat with an open gallery and an atelier. Situated on the fifth floor with no lift in a renovated late 19th century building with views of Malá Strana neighborhood and the Prague Castle on one side, and the ornamental façade and landscaped gardens of the seat of the Government on the other. The building is fronted by a small park immediately across from Malostranská metro station and tram stop.

The interior features a fully fitted open kitchen with dining area and living room with atelier windows, and two bedrooms separated by sliding doors (could be left open to create a huge open space). There is a shower bathroom with toilet, a separate atelier or study, and an airy open gallery.

Preserved original details, wooden floors, security entry door, washer, dishwasher, storage, audio entry phone. Balcony off the corridor in the building. No lift. Common building charges and utilities around CZK 4500 per month.



* Area of the unit according to the Civil Code. The area consists of the sum total area of the entire unit bounded by perimeter walls.