



## Apartment Three-bedroom (4+1)

Rented

142 m<sup>2</sup>, Prague 6, Dejvice, Na Kodymce





## Apartment Three-bedroom (4+1)

Rented

142 m², Prague 6, Dejvice, Na Kodymce

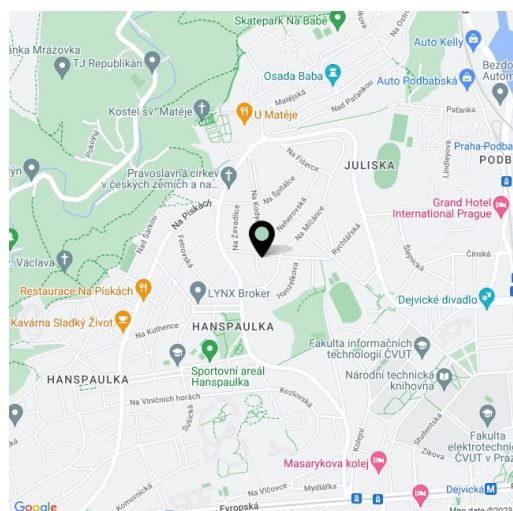
Total area	148 m²
Floor area*	142 m²
Balcony	6 m²
Parking	Garage parking space at CZK 3000/month plus parking in front of the garage.
Garage	Yes
Cellar	Yes
PENB	G
Reference number	20386
Available from	Immediately

**Bright 3-bedroom flat with a balcony and a 52 m² roof terrace, on the first floor of a Functionalist villa with preserved original features and perfect clean style (architect F.M.Černý). Located in the prestigious quiet Hanspaulka neighborhood with lots of greenery and beautiful panoramic views of Prague. Convenient to Czech as well as international schools, shopping, tennis courts, ideal location for jogging and walks, 300 m from the Šárka natural preserve. Good transportation connections - 15-20 min. to the city center, 15 min. to the airport, bus stop within walking distance.**

The 1939 villa has been meticulously reconstructed and modernized, yet has retained the spirit of the time and style in all original details. It has three apartment units, one on each floor, and it is included on the list of the immovable cultural heritage.

The interior includes a living room, fully fitted eat-in kitchen, 3 bedrooms, bathroom with toilet, and a guest toilet, a spacious entry hall, winter garden, balcony and 2 storage rooms. The tenants are also free to use the roof terrace with great views.

Solid wood parquet and cork flooring, large windows, dishwasher, Internet, telephone line, Astra satellite TV connection, alarm connected to a security agency, audio entry phone, cellar. Shared laundry room with washers and dryers in the basement. Monthly deposit for common building charges, electricity, water and heating CZK 6400 for two persons.



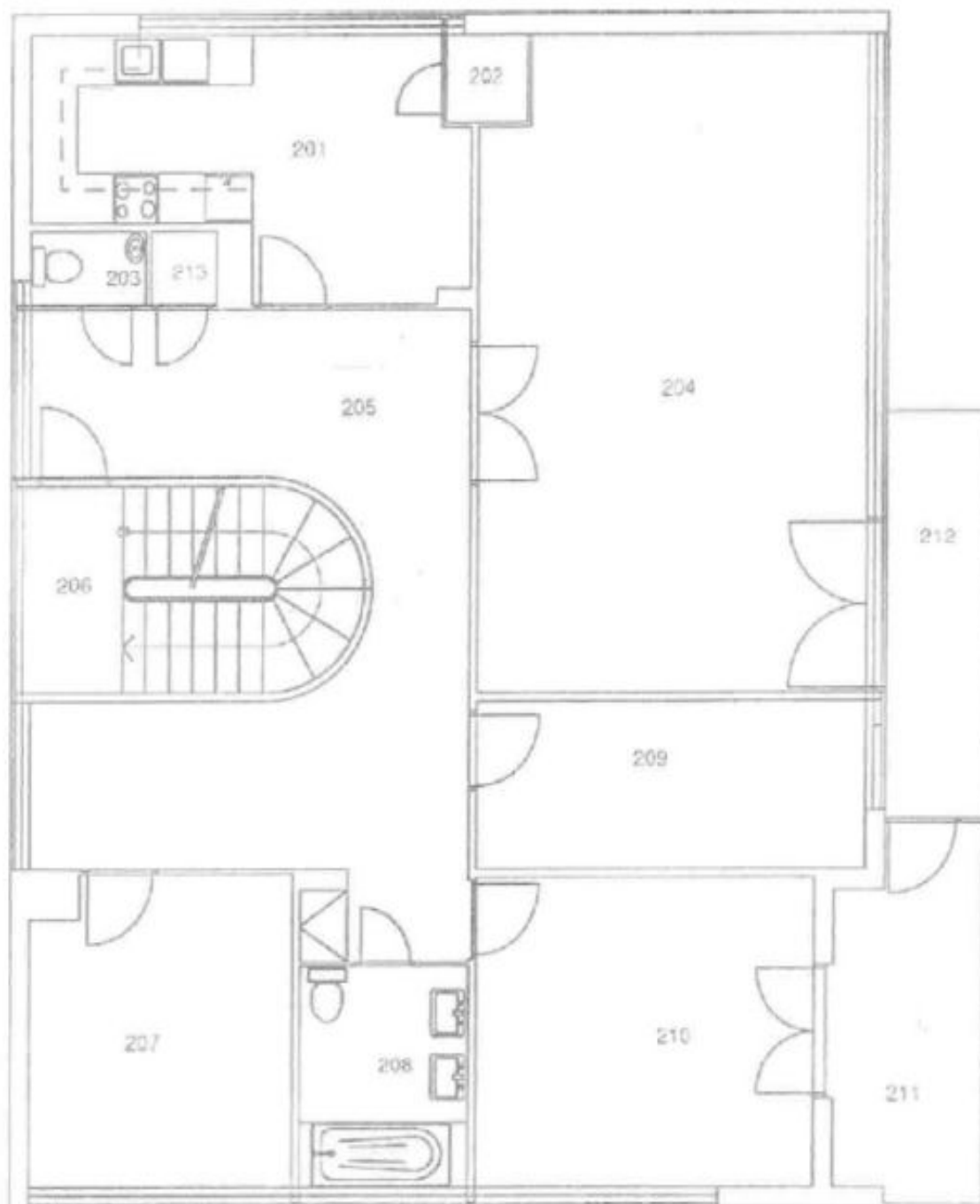
\* Area of the unit according to the Civil Code. The area consists of the sum total area of the entire unit bounded by perimeter walls.



## Apartment Three-bedroom (4+1)

Rented

142 m², Prague 6, Dejvice, Na Kodymce



1. PATRO