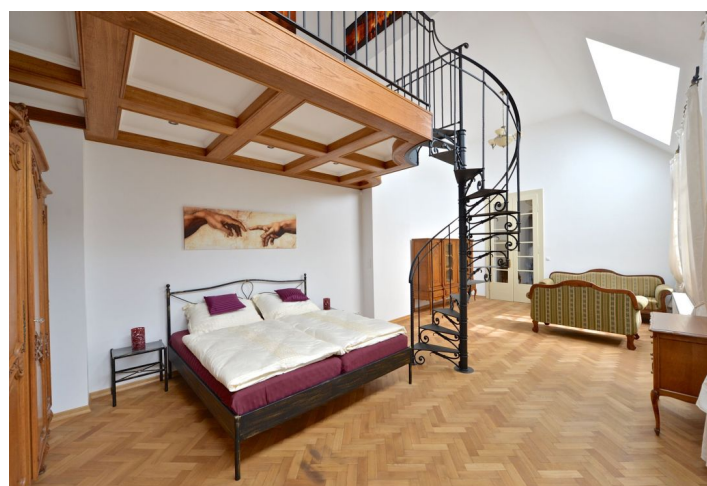




Apartment Two-bedroom (3+kk)

Rented

220 m², Prague 1, Malá Strana, Míšeňská





Apartment Two-bedroom (3+kk)

Rented

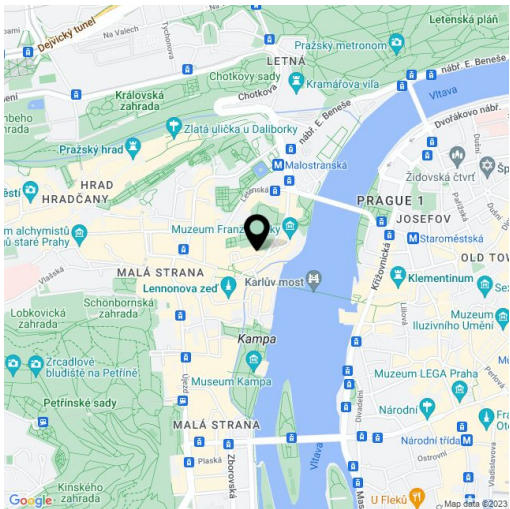
220 m², Prague 1, Malá Strana, Míšeňská

Total area	220 m²
Parking	-
Cellar	-
PENB	G
Reference number	20315
Available from	Immediately

Benefiting from the great Malá Strana atmosphere and a courtyard garden, this fully refurbished furnished 2-bedroom flat is on the first floor of a fully renovated historic building without a lift. Located in the very center of the picturesque Malá Strana neighborhood, just steps from the Charles Bridge and Malostranské Square with tram connections, and within walking distance of the Prague Castle. A few minute walk to Malostranská metro station, line A.

The interior features a spacious lounge with an historic ceramic stove, living room with a fully fitted open kitchen and dining area, a large bedroom with a circular staircase leading to a built-in gallery, study (or second bedroom), full bathroom, hall, a guest toilet, and entry hall. There is a sauna on the ground floor for private use of the tenants.

Preserved original details, high ceilings, large windows, solid wood parquet floors, security entry door, gas heating, alarm. Can be partly furnished or unfurnished. Common building charges and utilities are billed separately.



* Area of the unit according to the Civil Code. The area consists of the sum total area of the entire unit bounded by perimeter walls.