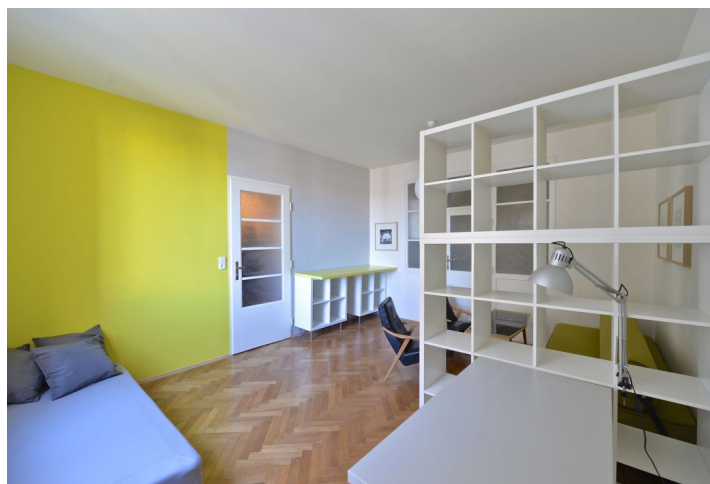




## Apartment Studio (1+1)

33 m², Prague 7, Holešovice, Tusarova

**Rented**





## Apartment Studio (1+1)

33 m², Prague 7, Holešovice, Tusarova

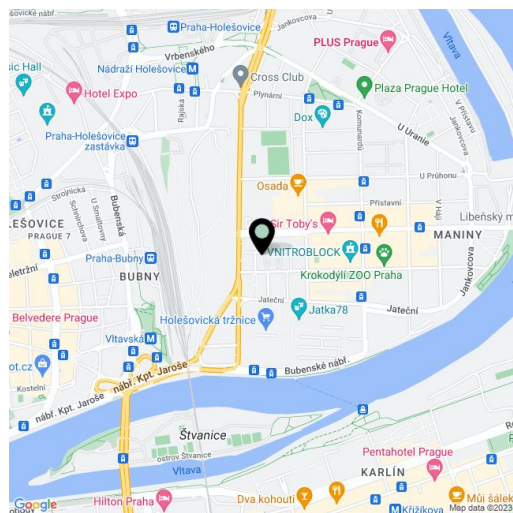
Rented

Total area	33 m²
Parking	-
Cellar	-
PENB	G
Reference number	19680
Available from	Immediately

Newly fully refurbished furnished studio apartment with preserved original features, on the sixth floor of a well kept Functionalist building with a new lift. Located in a quickly developing part of Holešovice, a few steps from a tram stop with easy access to the Vltavská metro station and the city center. Full amenities in the area including schools, shops, a pharmacy, medical facility, restaurants and cafes.

The flat has a new fully fitted kitchen, living room with working and sleeping area, shower bathroom with toilet, storage room, and entry hall with built-in storage space.

Renovated solid wood parquet floors, doors and windows, central heating, washing machine, dishwasher, fold out sofa, audio entry phone. Common building charges, water and heating CZK 1326 per month. Monthly deposit for electricity CZK 450 per month. Ideal for a single person.



\* Area of the unit according to the Civil Code. The area consists of the sum total area of the entire unit bounded by perimeter walls.