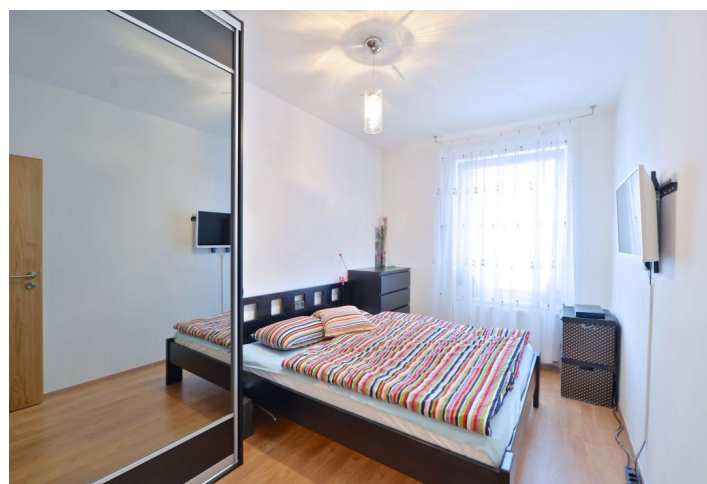




## Apartment One-bedroom (2+kk)

Sold

49 m², Prague 5, Zličín, Sazovická





## Apartment One-bedroom (2+kk)

**Sold**

49 m², Prague 5, Zličín, Sazovická

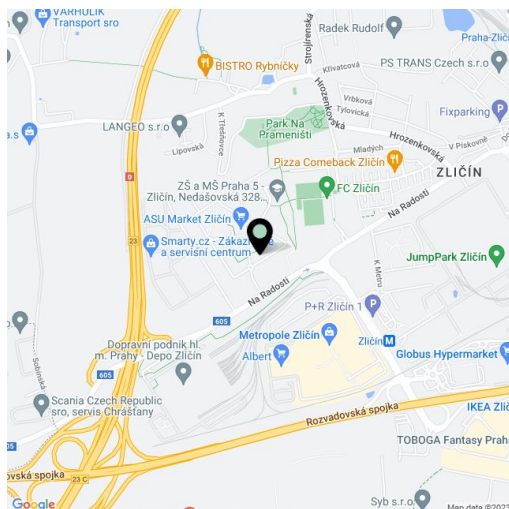
Total area	71 m²
Floor area*	49 m²
Terrace	22 m²
Garden	58 m²
Parking	1 garage parking space.
Garage	Yes
Cellar	Yes
PENB	G
Reference number	19659

**One-bedroom studio with terrace and garden on the ground floor of a new apartment building from 2014 with an underground garage, situated a few minutes by foot from the Metropole Zličín shopping center, bus and metro station, within easy reach to Prague's center and to the airport in Ruzyně.**

The apartment consists of a living room with kitchen and access to the garden with terrace, bedroom, hall, and bathroom with bathtub and toilet. Laminate flooring in living rooms and tiles in the hallway, bathroom, kitchen and terrace, plastic Euro windows, **security entrance door**, central heating. **1 garage parking space and a cellar are included in the purchase price.**

In the vicinity there is a nursery and primary school, sports facilities (indoor arena + playground), park.

Interior 49 m², terrace 22.4 m², garden 57.7 m².



\* Area of the unit according to the Civil Code. The area consists of the sum total area of the entire unit bounded by perimeter walls.