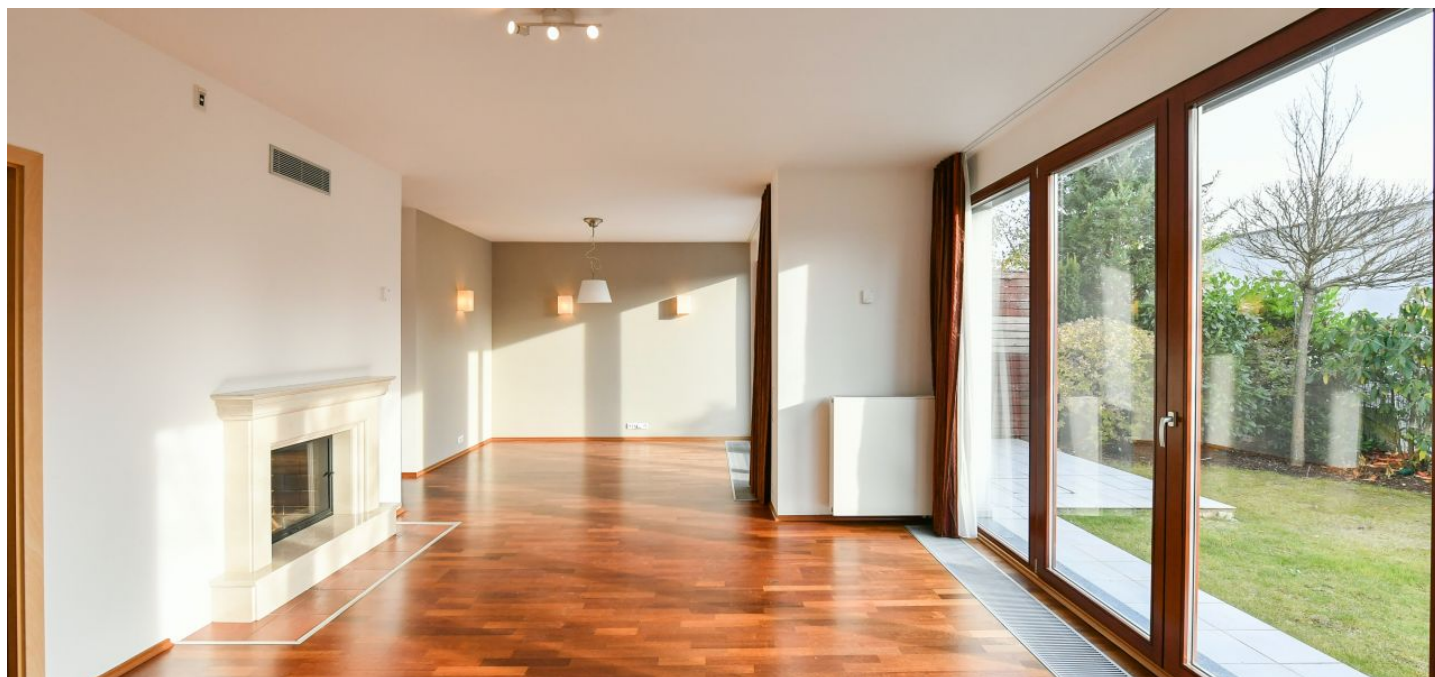




House Six-bedroom (7+1)

Rented

259 m², Prague 5, Jinonice, U panské zahrady





House Six-bedroom (7+1)

Rented

259 m², Prague 5, Jinonice, U panské zahrady

Plot	386 m²
Foot print	118 m²
Garden	268 m²
Parking	Double garage.
Garage	Yes
Cellar	-

Service price Utilities are billed separately
(approx CZK 10,000 per month).

PENB G

Reference number 1944

Available from Immediately

This premium, fully air-conditioned semi-detached house with a garden is set in a quiet residential neighborhood surrounded by greenery, on the edge of the Vidoule natural protected area, just moments from the German school. The Nové Butovice metro station and shopping mall are within walking distance (7 and 15 minutes respectively), and there is an easy connection to the city center and the Anděl business and entertainment zone.

The home offers, on the ground floor, a living room with a **fireplace** and large French windows providing access to the **patio** and **garden**, a fully fitted and equipped kitchen with sliding doors to the living area, a separate toilet, and an entrance hall with access to the garage. The first floor features a master bedroom with an en-suite bathroom and **walk-in closet**, two smaller bedrooms each with a **walk-in closet**, a guest bedroom, a full family bathroom, and a utility/laundry room. The top floor consists of two bedrooms and a large **terrace**. The basement includes a utility room and two rooms (one with a sink and a shower) that can be used as a fitness room or guest bedrooms.

Hardwood floors and stairway, tiles, underfloor heating in the bathrooms and toilets, blinds, central vacuum cleaner, Villeroy & Boch bathroom fixtures, washer, dryer, dishwasher, microwave oven, wine fridge, alarm system with pet sensitive detectors connected to a security agency, TV and PC connections in all rooms. **Double garage** with remote control access.

