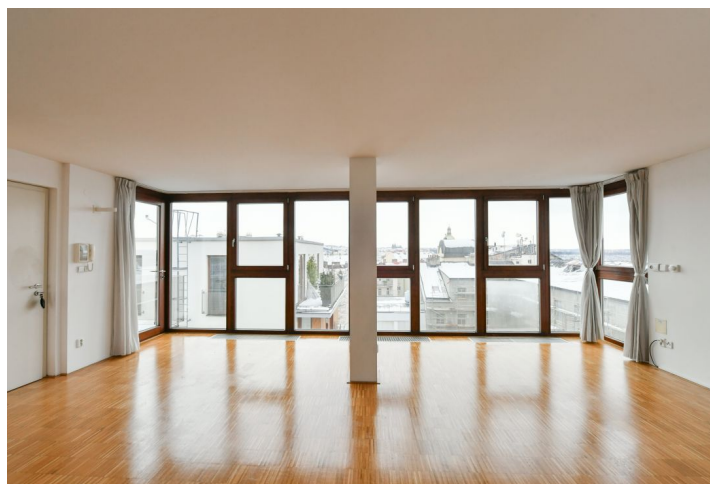




## Apartment Two-bedroom (3+kk)

Rented

106 m², Prague 2, Vinohrady, Balbínova





## Apartment Two-bedroom (3+kk)

**Rented**

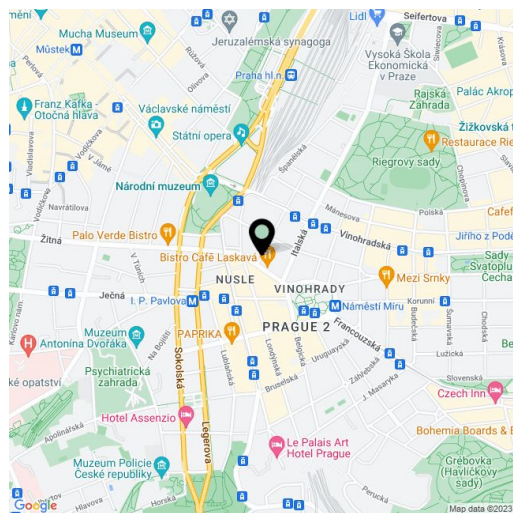
106 m², Prague 2, Vinohrady, Balbínova

Total area	112 m²
Floor area*	106 m²
Balcony	6 m²
Parking	Garage parking space available at CZK 2,500/month.
Garage	Yes
Cellar	Yes
Service price	Common building charges and utilities approx. CZK 8,000/month. Electricity is paid separately.
PENB	C
Reference number	1890
Available from	Immediately

This unfurnished, 2-bedroom apartment with a 6 sq. m. courtyard-facing balcony is located on the 6th floor of a refurbished traditional building with an elevator. Conveniently located in the popular Vinohrady residential neighborhood a few min. walk from the city center, Riegrovy Sady Park, and Wenceslas Square, moments from the Muzeum, Náměstí Míru, and I.P. Pavlova metro stations with multiple tram links and a wide range of amenities in the immediate vicinity.

The apartment has a spacious living room with a full glass wall overlooking the Prague Castle and Petřín Hill panorama, a fully fitted open plan kitchen, two attic bedrooms, one with a built-in wardrobe, and a modern bathroom with a bathtub, double sink, and toilet.

**Air-condition**, storage, French windows, parquet floors, security door, washer, dryer, dishwasher, microwave, telephone line, satellite TV connection. **Garage** parking space available at CZK 2,500/month. **Cellar** available. Available from July 2023.



\* Area of the unit according to the Civil Code. The area consists of the sum total area of the entire unit bounded by perimeter walls.