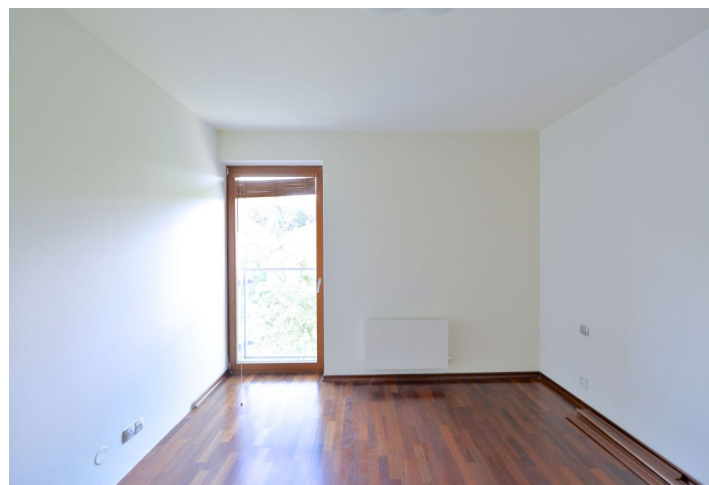




## Apartment One-bedroom (2+kk)

**Sold**

80 m², Prague 10, Vršovice, Vršovická





## Apartment One-bedroom (2+kk)

**Sold**

80 m², Prague 10, Vršovice, Vršovická

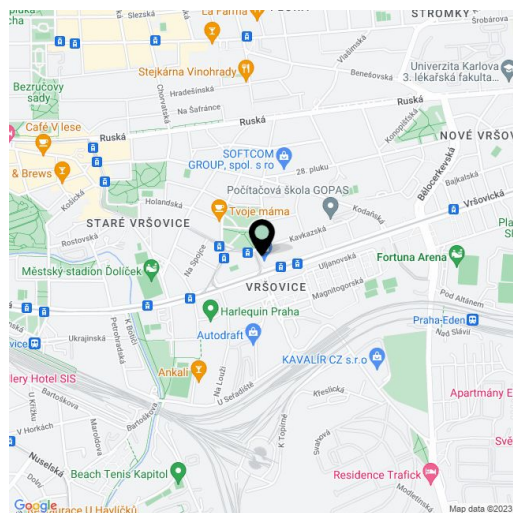
Total area	85 m²
Floor area*	80 m²
Balcony	5 m²
Parking	1 garage parking space included
Garage	Yes
Cellar	Yes
PENB	G
Reference number	18684

**Modern and bright one-bedroom apartment with two balconies and unique view of Gröbeho villa and Havlíčkovy sady vineyard on the 6th floor of a contemporary building in Vršovice with excellent access to the center.**

The apartment, which offers the possibility of changing the disposition to two-bedrooms, consists of a living room with fully equipped kitchenette and balcony, bedroom with dressing room and a second balcony and bathroom with bathtub. Features include wooden windows, **wooden floors from Kährs, ALNO kitchen with Bosch appliances, luxury brand JOOP in the bathroom.** The apartment is oriented to the north/west. The purchase price includes a basement, there is a possibility to buy a garage parking space.

The residential complex has a grocery store, fitness studio with indoor swimming pool and a restaurant. Location with full amenities and easy access to the city center by public transport (tram and bus stop situated just a 3-minute walk from the apartment). Near a nursery, primary and secondary schools, cafés, restaurants, sports complex with tennis hall in the university sports club in Prague.

Interior 80 m², balconies 4,5 m².



\* Area of the unit according to the Civil Code. The area consists of the sum total area of the entire unit bounded by perimeter walls.