



## Apartment Two-bedroom (3+kk)

Ask for price

132 m<sup>2</sup>, Prague 6, Dejvice, Mařákova





## Apartment Two-bedroom (3+kk)

**Ask for price**

132 m², Prague 6, Dejvice, Mařákova

Total area	132 m²
Parking	-
Cellar	Yes
PENB	G
Reference number	18683

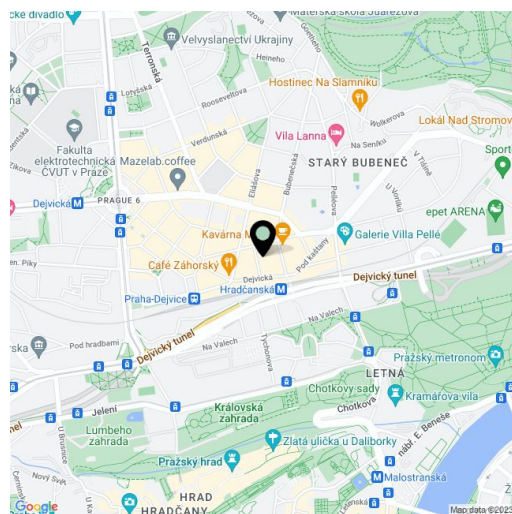
This modern, luxuriously furnished apartment renovated in 2013 and designed by an architect is on the 3rd floor of a completely reconstructed building situated in one of the most attractive locations in the vicinity of the Prague Castle.

The dominant feature of the apartment is a spacious living room with a fully-equipped kitchen, a dining area, large windows, and an ingenious set of built-in ceiling lights. There are also two bedrooms (one of which is currently used as an office), a bathroom with a bathtub, shower, and 2 sinks, a separate toilet, a utility room, and a foyer. Amenities include hardwood and tile floors, **tiling with moulded gold** in the bathroom, new wooden windows. The building, which went through a total reconstruction that preserved the original architectural elements in 2014, features a video surveillance system; an elevator will be added very soon. **The purchase price includes a cellar unit, there is also a possibility to rent a parking space in the courtyard of the building across the street.**

Newly renovated Mařákova Street is one of the most sought-after addresses in Prague. It offers full amenities and excellent public transport connections to the city thanks to the nearby Hradčanská metro station and several tram lines. The building is located **within walking distance of the Prague Castle, the Jelení příkop moat, and the Letenské sady and Stromovka parks**, close to many restaurants, cafés, kindergartens, and primary schools.

The interior of 132 m².

In addition to regular property viewings, we also offer **real-time video viewings** via WhatsApp, FaceTime, Messenger, Skype, and other apps.



\* Area of the unit according to the Civil Code. The area consists of the sum total area of the entire unit bounded by perimeter walls.

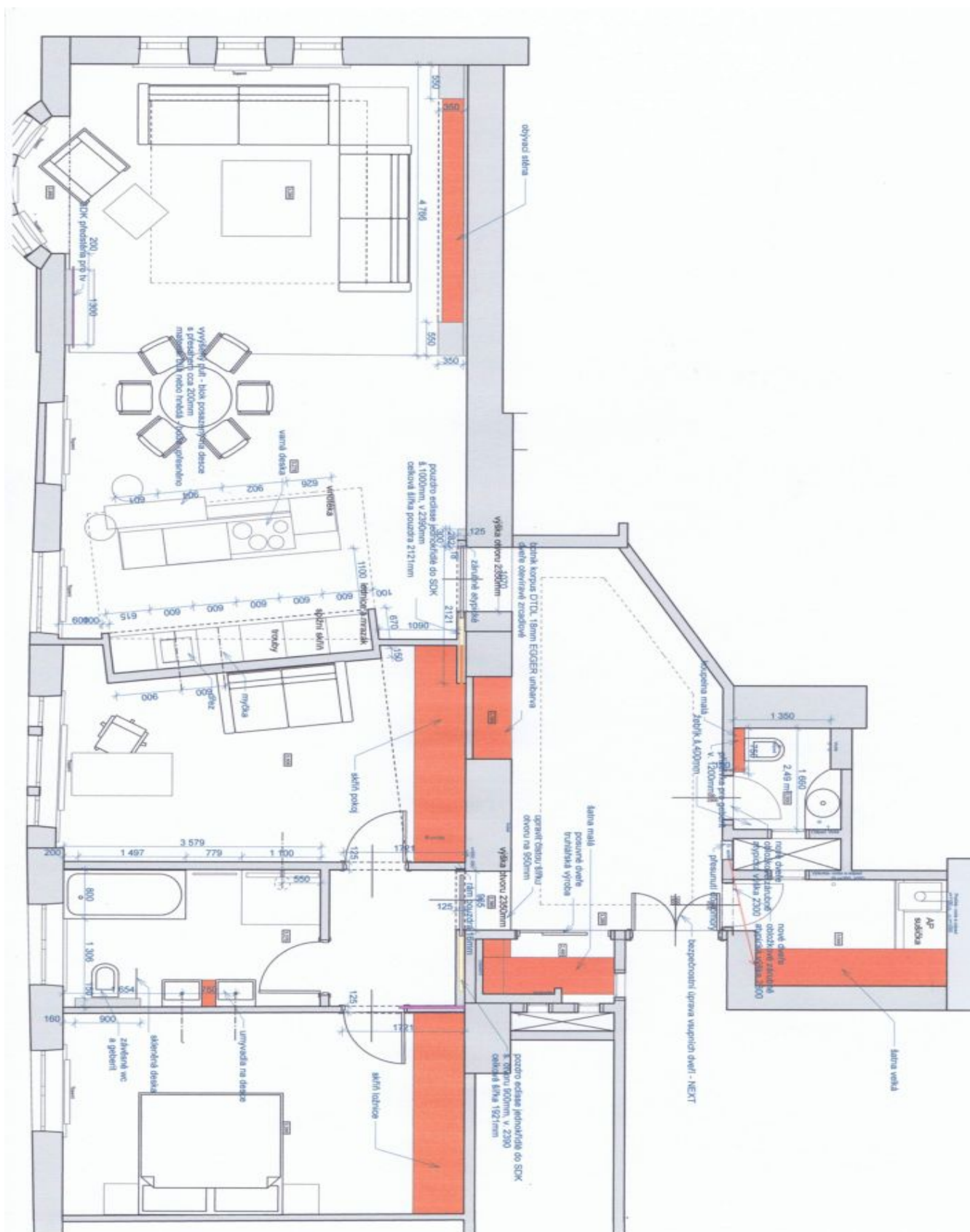




## Apartment Two-bedroom (3+kk)

Ask for price

132 m<sup>2</sup>, Prague 6, Dejvice, Mařákova



## Ask for price

132 m<sup>2</sup>, Prague 6, Dejvice, Mařákova

