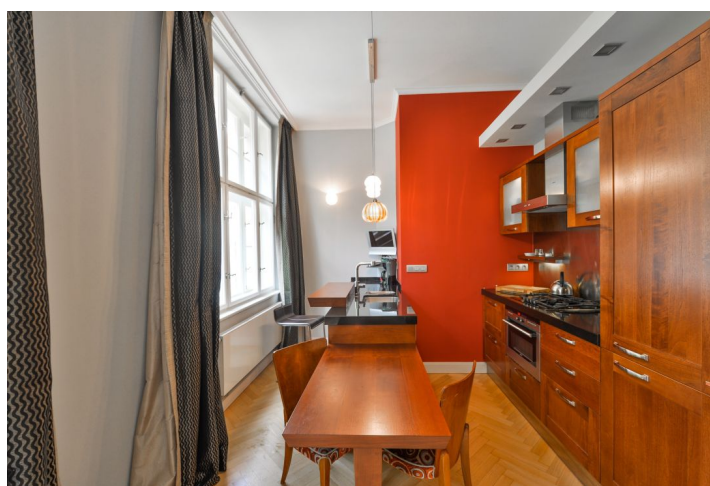
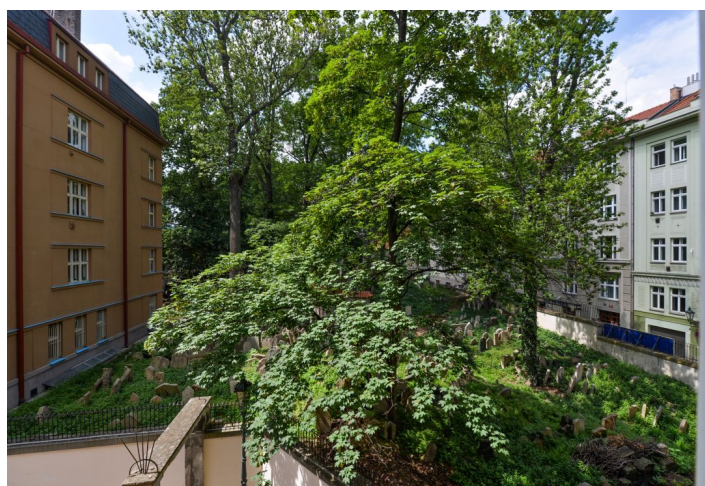




Apartment One-bedroom (2+1)

Sold

81 m², Prague 1, Staré Město, Maiselova





Apartment One-bedroom (2+1)

Sold

81 m², Prague 1, Staré Město, Maiselova

| | |
|------------------|---|
| Total area | 83 m² |
| Floor area* | 81 m² |
| Balcony | 2 m² |
| Parking | Parking is available in front of the building (residential zone). |
| Cellar | Yes |
| PENB | G |
| Reference number | 18409 |

This beautifully renovated apartment with a small balcony is situated on the 2nd floor of a reconstructed building from the late 19th and early 20th centuries, with original features preserved. Prestigious location in the vicinity of Pařížská Street, just a few steps from the Vltava River and a few minutes' walk from Old Town Square.

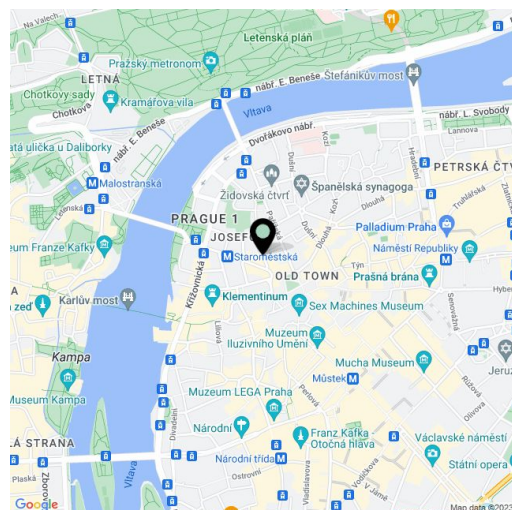
The layout features a living room with a kitchen and a view of the Old Jewish Cemetery, a large bedroom with a balcony, a premium bathroom with double glazed windows, a separate powder room, and an entrance hall.

The apartment boasts high ceilings and was renovated under the leadership of architect **Eva Willenbrink**. The interior includes **casement windows**, refurbished **parquet flooring**, restored interior **doors with original brass handles** and etched-glass panes, **marble** elements in the bathroom and powder room, built-in wardrobes and much more. The kitchen is equipped with **Miele appliances**. There is an electronic security system. Thanks to the location of the building, which is across from the Jewish Town Hall, the street is guarded 24/7 and is completely safe. The apartment is complete with a **cellar unit** (approx. 5 m²). Parking is available in front of the building (residential zone).

Prestigious location with noble apartment buildings and winding streets, within walking distance of many sights and everything needed (schools of all levels, offices, restaurants and cafes, theaters and cinemas, doctors, shops, post offices, libraries, etc.). Convenient public transportation can be found in the immediate area (**Staroměstská metro station**, Právnická fakulta tram stop, Pařížská bus stop - w/ connections to the Florenc metro station).

The usable area is 83.12 m², balcony 1.5 m². According to the Land registry the area is 73.8 m², balcony 1.39 m², cellar.

* Area of the unit according to the Civil Code. The area consists of the sum total area of the entire unit bounded by perimeter walls.

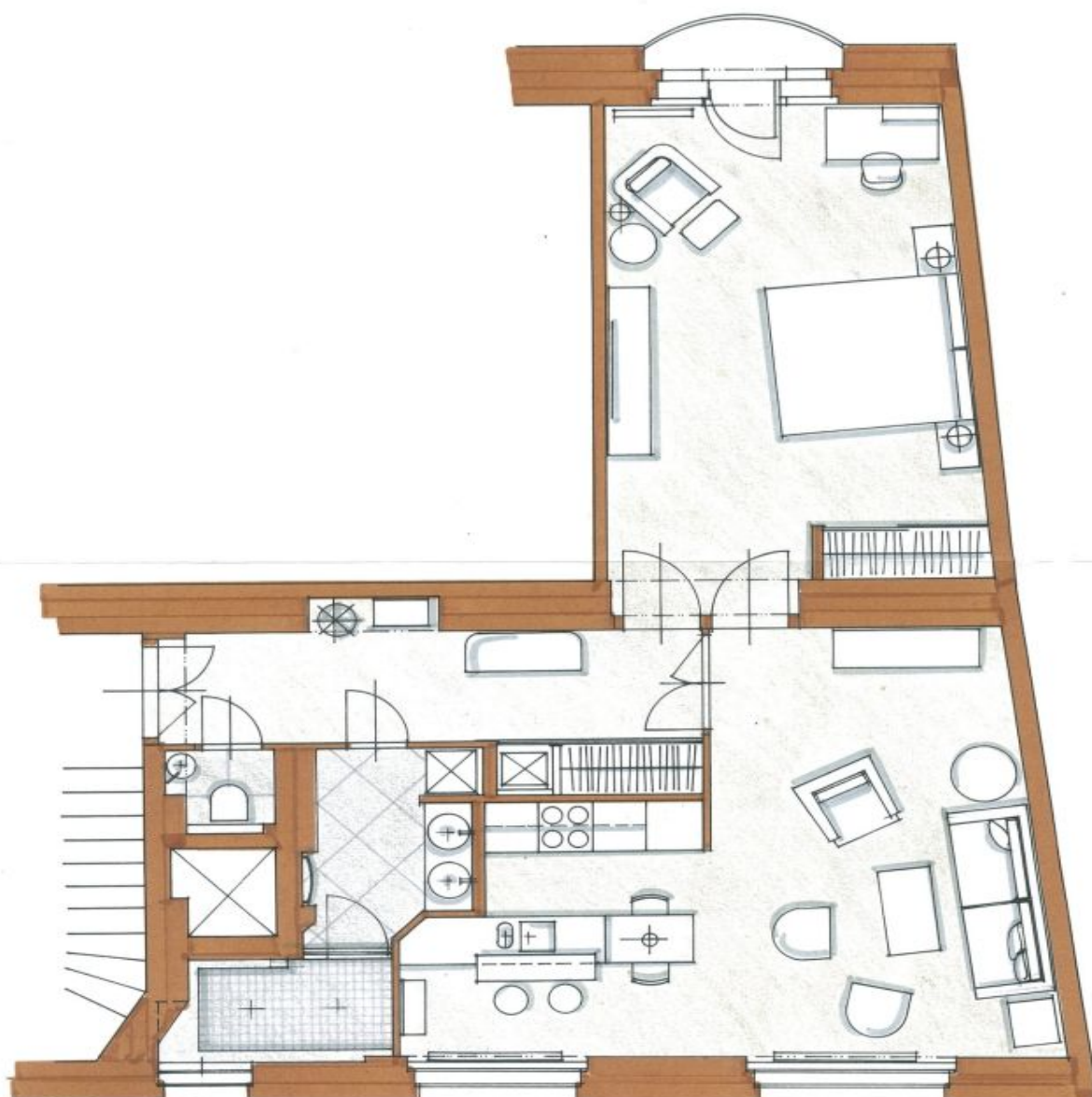




Apartment One-bedroom (2+1)

Sold

81 m², Prague 1, Staré Město, Maiselova



RECONSTRUCTION • M+J DOMAS • MĚLSKOVA 17, P. 1 • NEW ARRANGEMENT • M+J SO • ATELIER HEEVA • 6/2005