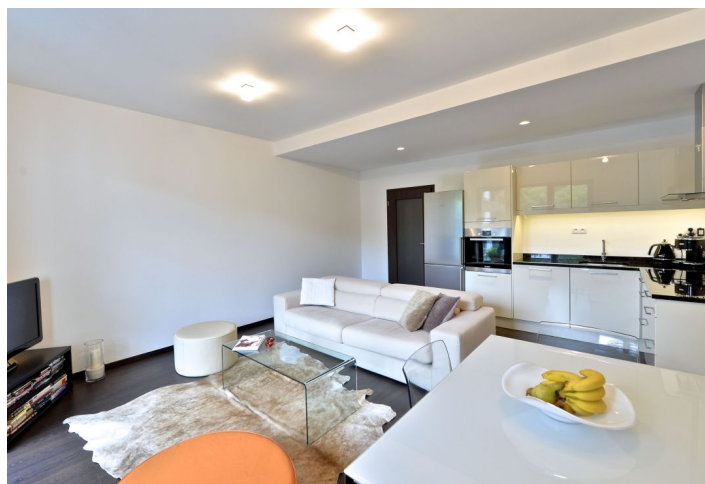




Apartment One-bedroom (2+kk)

Rented

58 m², Prague 8, Libeň, V Mezihoří





Apartment One-bedroom (2+kk)

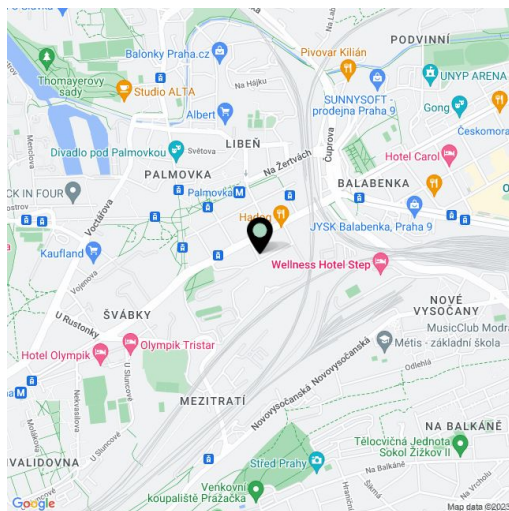
Rented58 m², Prague 8, Libeň, V Mezihoří

Total area	76 m ²
Floor area*	58 m ²
Terrace	18 m ²
Parking	Parking space in underground garages included.
Cellar	-
PENB	G
Reference number	18183
Available from	Immediately

This completely furnished (including dishes and bedding) flat with two terraces (18 m² together) is situated on the 4th floor of a newly built residential development that is complete with a camera system, central atrium, playground and underground parking. Located in a quiet Prague 8 neighborhood, with full public amenities within walking distance, and a five minute walk to the Palmovka metro station.

Furnished with high quality design furniture, the flat includes a living room with a fully fitted open kitchen, bedroom, bathroom with a bathtub, toilet separately, a walk-in closet, and an entry hall.

Floating floors and tiles, washing machine, audio entry phone. One parking space included. Cleaning available once a week. Common building charges and deposit for utilities incl. Internet CZK 4100 per month.



* Area of the unit according to the Civil Code. The area consists of the sum total area of the entire unit bounded by perimeter walls.