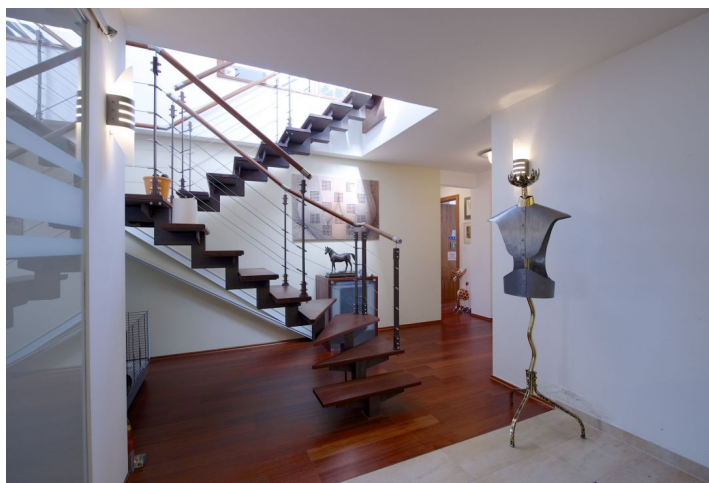




## Apartment Three-bedroom (4+kk)

Sold

209 m², Prague 7, Holešovice, Na Maninách





## Apartment Three-bedroom (4+kk)

**Sold**

209 m², Prague 7, Holešovice, Na Maninách

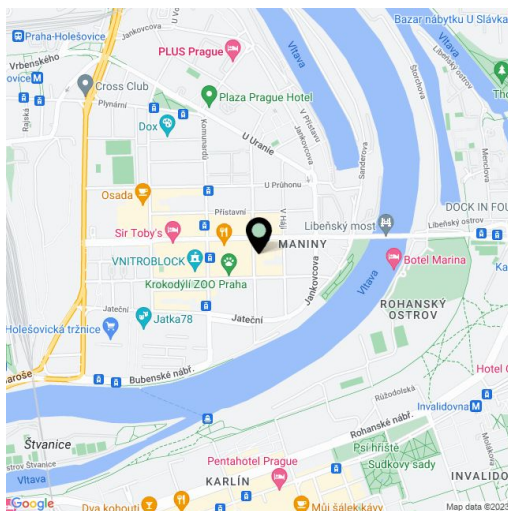
Total area	341 m²
Floor area*	209 m²
Terrace	132 m²
Parking	Yes
Garage	Yes
Cellar	-
PENB	G
Reference number	18072

**High-standard apartment boasting a large roof terrace offering stunning views of Prague including the Prague Castle. The apartment is situated on the 7th and 8th floor of a new building with elevator in the dynamically developing central part of Holešovice.**

The layout of this air-conditioned apartment with generous space features open concept living room with a fireplace and fully equipped kitchen with dining area and access to a big balcony, 3 bedrooms, closet, 2 bathrooms and separate toilet. The staircase leads to the spacious roof terrace that offers pleasant seating and a small kitchen with grill. The apartment features high-standard equipment such as wooden floor in the main living area, large format tiles in the bathrooms, built-in home cinema in the living room, suspended ceilings. All floors are heated. **The purchase price includes 3 garage parking spaces.**

The apartment is located in the attractive area with rich public amenities. Close to the Vltava riverbank, a tram stop and Vltavská metro station.

Interior 209 m², balcony 18 m², roof terrace 114 m².



\* Area of the unit according to the Civil Code. The area consists of the sum total area of the entire unit bounded by perimeter walls.