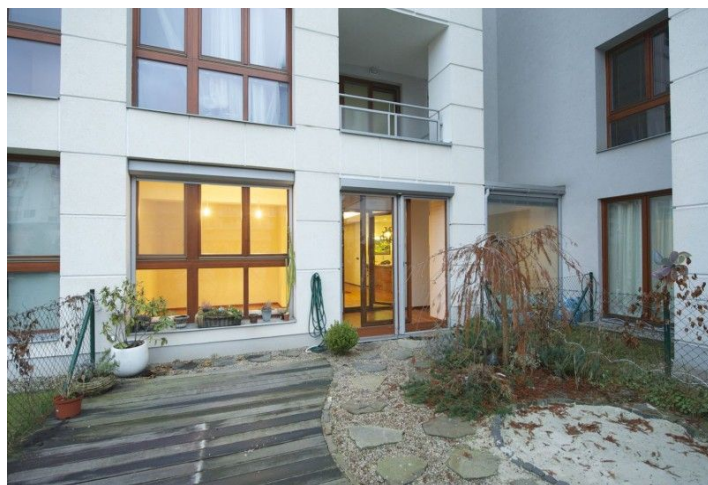
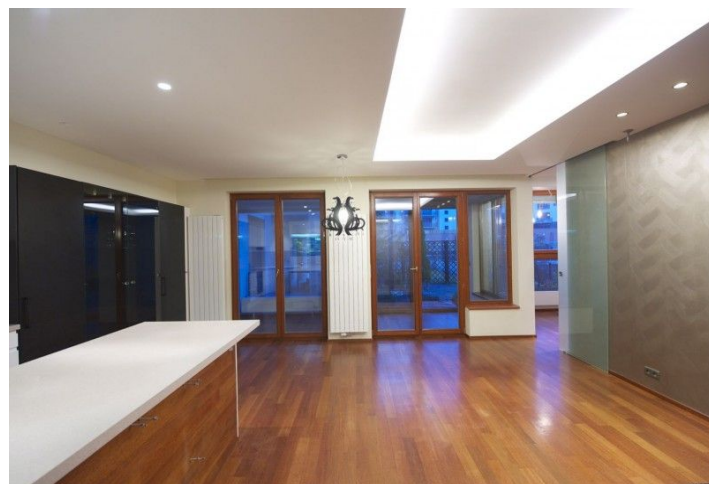
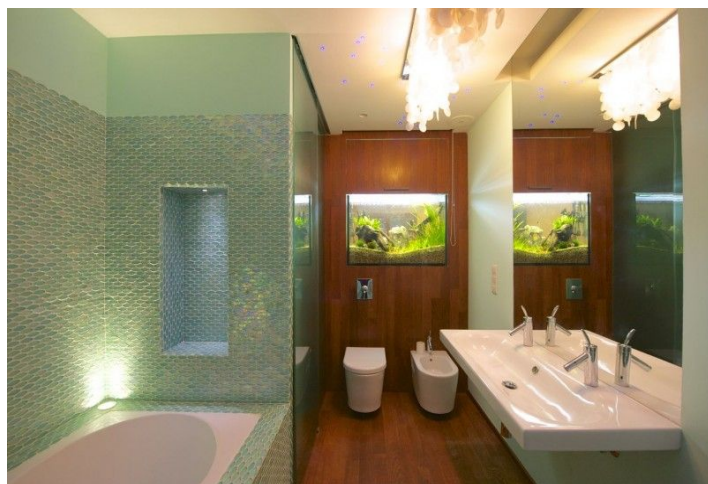




Apartment Two-bedroom (3+kk)

161 m², Prague 6, Dejvice, Heinemannova

Sold





Apartment Two-bedroom (3+kk)

Sold161 m², Prague 6, Dejvice, Heinemannova

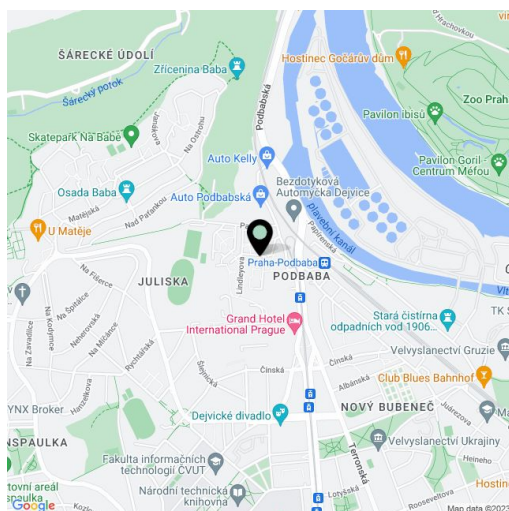
Total area	161 m ²
Garden	80 m ²
Parking	1 garage parking space included in the purchase price
Garage	Yes
Cellar	Yes
Service price	5 000 CZK monthly
PENB	G
Reference number	17677

Boasting a built-in aquarium, a 35 m² private garden and a 15 m² terrace, this reconstructed apartment is situated on the ground floor of a modern residential project that is complete with underground parking. Located in a green neighborhood within walking distance of Stromovka Park and the Vltava embankment. Dejvická metro station is five minutes by tram, tram stop is a few moments away.

The interior features a spacious living room with a fully fitted open kitchen, winter garden with garden access (could be study), master bedroom with terrace access, second bedroom facing the garden, design bathroom (bathtub, toilet), and entry hall. Wood floors, built-in wardrobes, French windows, electric blinds, alarm, video entry phone. **Cellar and 2 garage parking spaces included in the purchase price.**

Full public amenities in the neighborhood, tram stop a few steps away, 5 min. by tram to Dejvická metro station.

Interior 81 m², 15 m² terrace, 65 m² garden.



* Area of the unit according to the Civil Code. The area consists of the sum total area of the entire unit bounded by perimeter walls.