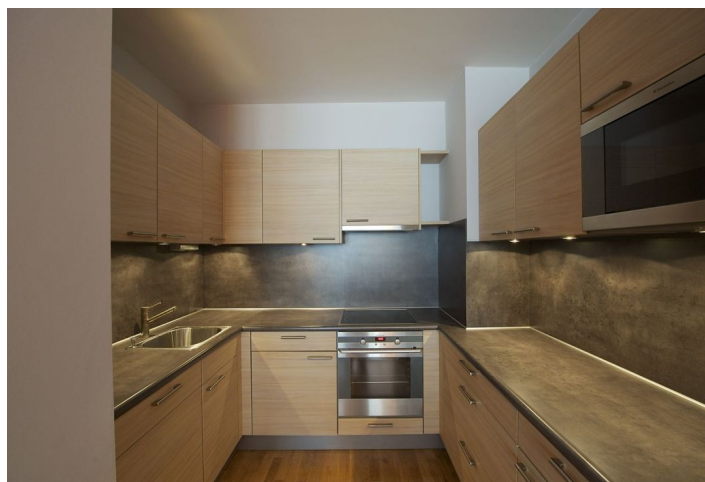
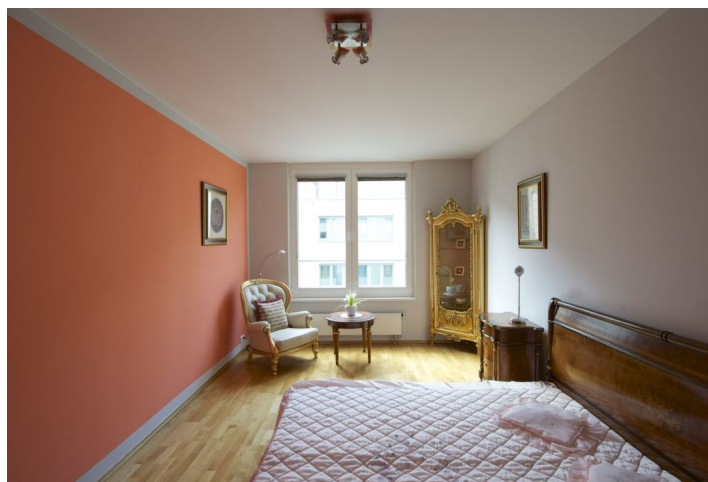
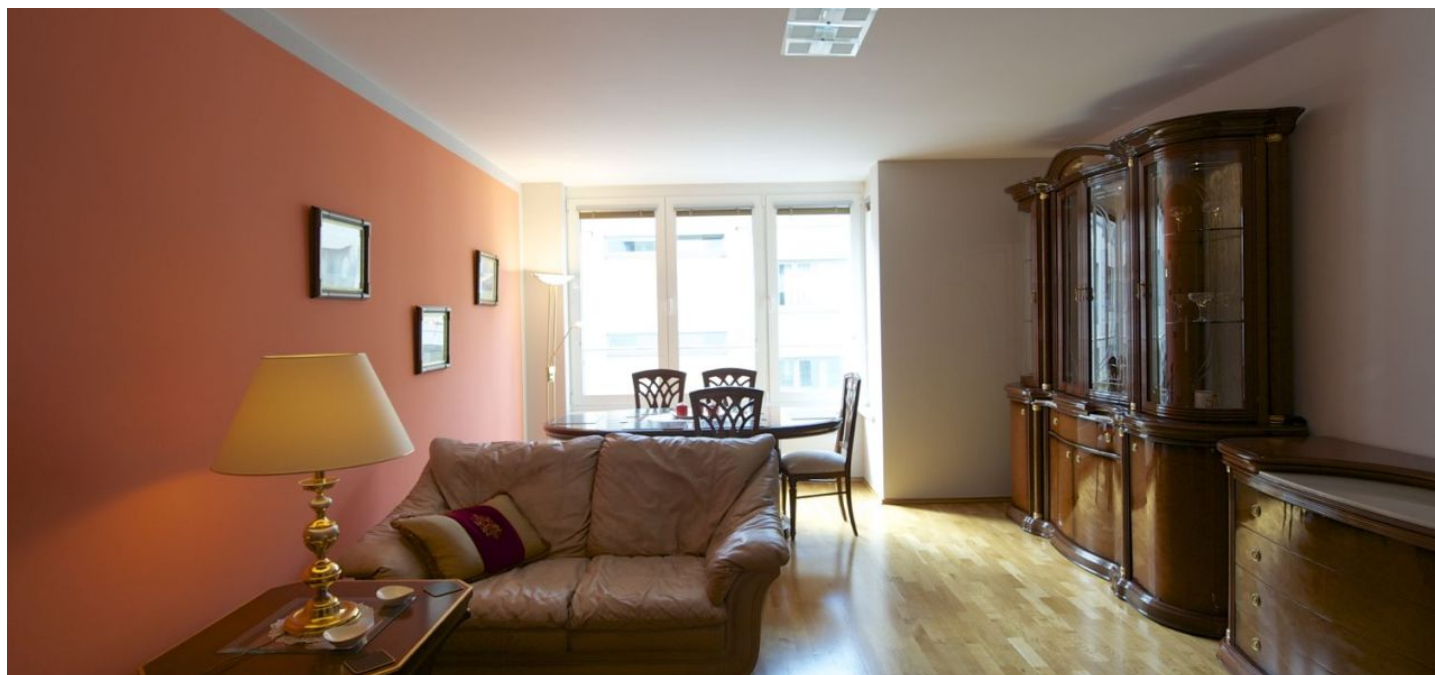




Apartment One-bedroom (2+kk)

Rented

68 m², Prague 5, Smíchov, Karla Engliše





Apartment One-bedroom (2+kk)

Rented

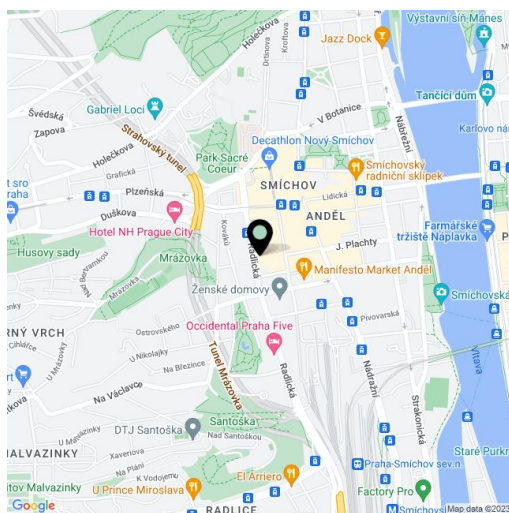
68 m², Prague 5, Smíchov, Karla Engliše

Total area	68 m²
Parking	Parking available.
Garage	Yes
Cellar	-
PENB	G
Reference number	16627
Available from	Immediately

Furnished 1-bedroom flat on the fourth floor with a lift in a contemporary residential project with 24-hour reception, security and underground parking, in the heart of the Anděl neighborhood, with quick metro and tram connections to the city center. Great location in one of Prague's fastest developing city center areas, with new office buildings, design hotels, fancy restaurants, bars and cafes, shopping malls, cinemas and other entertainment facilities, and convenient to the French School.

The interior includes living room with a fully fitted open kitchen, one bedroom with built-in wardrobes, bathroom with tub and toilet, and entry hall with built-in storage.

Parquet floors, security door, blinds, dishwasher, microwave oven, alarm, video entry phone. Parking can be arranged at an additional charge. Common building charges CZK 2700 per month. Electricity and gas are billed separately.



* Area of the unit according to the Civil Code. The area consists of the sum total area of the entire unit bounded by perimeter walls.