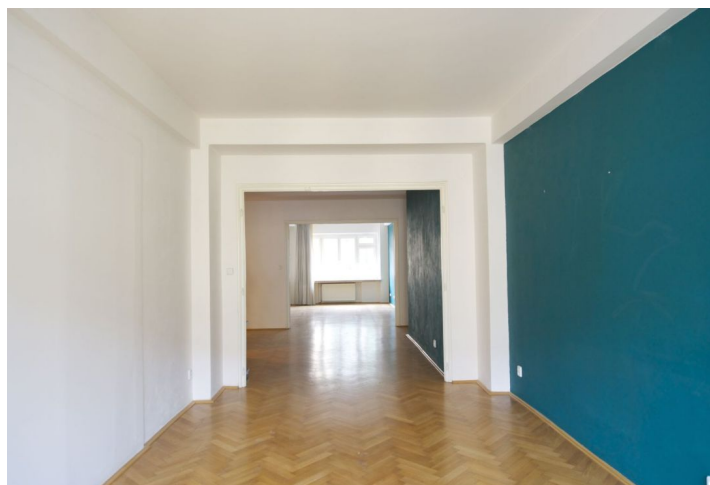




Apartment Two-bedroom (3+1)

Rented

138 m², Prague 1, Nové Město, Ostrovní





Apartment Two-bedroom (3+1)

Rented

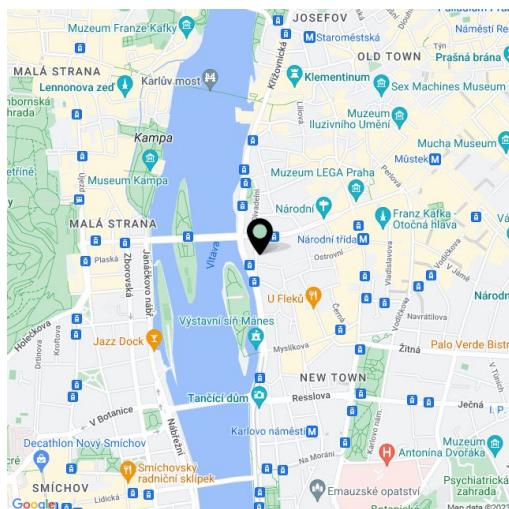
138 m², Prague 1, Nové Město, Ostrovní

| | |
|------------------|-------------------|
| Total area | 141 m² |
| Floor area* | 138 m² |
| Balcony | 3 m² |
| Parking | Parking possible. |
| Garage | Yes |
| Cellar | - |
| PENB | G |
| Reference number | 15748 |
| Available from | Immediately |

Boasting preserved original details, this high quality renovated 2-bedroom 2-bathroom apartment with a balcony is situated on the third floor of a refurbished Functionalist building with a lift. Centrally located next to the National Theater, moments from the Vltava river, Old Town and Malá Strana with all the major historic sights and cultural venues.

Very good public transportation connections, lots of restaurants and cafes in the area. The interior features a fully fitted contemporary kitchen with a balcony facing the courtyard, three spacious rooms interconnected by triple glass doors - could be living room, bedroom and dining room, second bedroom, bathroom with bath tub and toilet, bathroom with massage shower, guest toilet, walk-in closet, and entry hall.

Parquet and tile floors, airy rooms, large windows, security door, gas heating, washer, Miele kitchen appliances, audio entry phone. Parking can be arranged in the National Theater public garages. Quiet despite central location. Common building charges CZK 2000 per month. Gas and electricity will be transferred to the tenant.



* Area of the unit according to the Civil Code. The area consists of the sum total area of the entire unit bounded by perimeter walls.