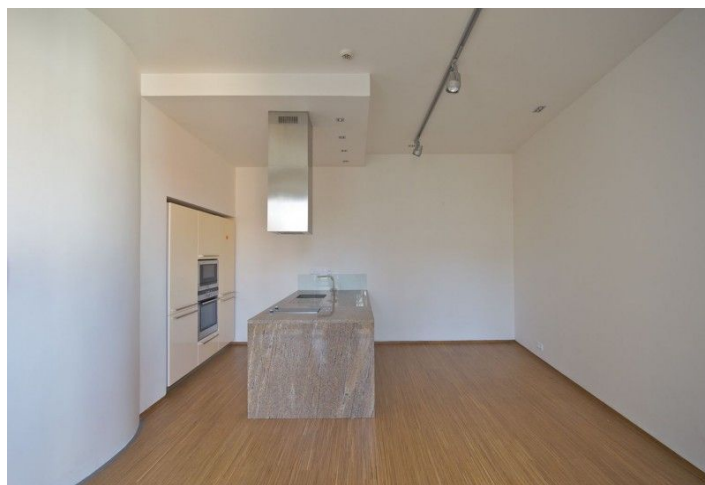
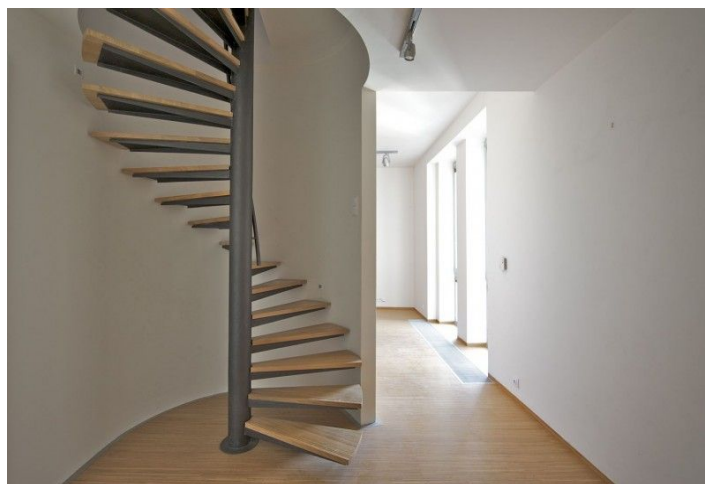
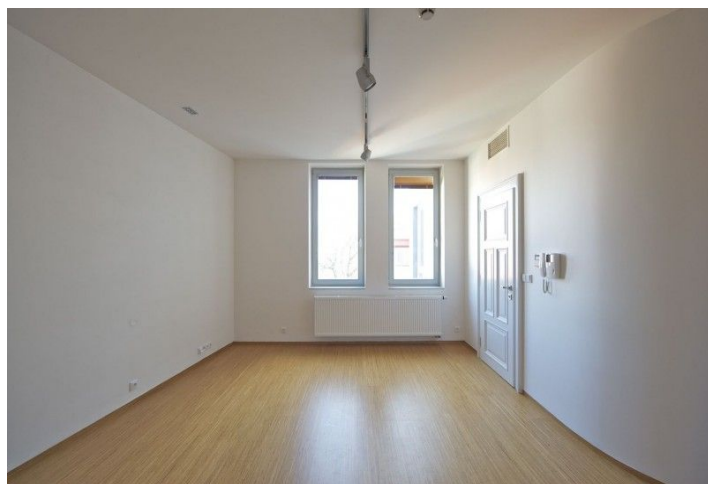




Apartment One-bedroom (2+kk)

Sold

73 m², Prague 1, Nové Město, Truhlářská





Apartment One-bedroom (2+kk)

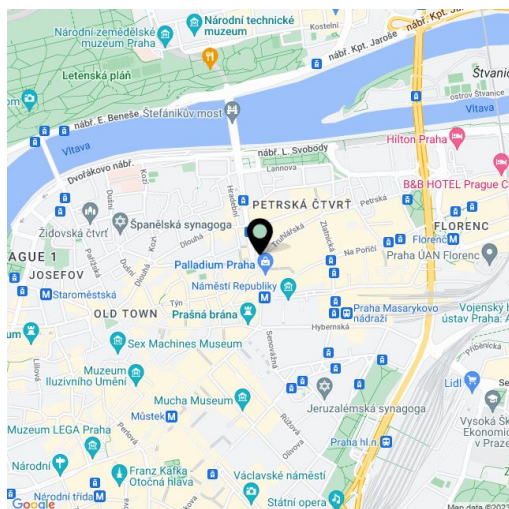
Sold

73 m², Prague 1, Nové Město, Truhlářská

Total area	73 m²
Parking	-
Cellar	-
PENB	G
Reference number	15168

Centrally located quality modern 1-bedroom split-level apartment on the 3rd and 4th floor of a classic late 19th century building, superbly renovated with attention to detail and retrofitted with a lift. Offering modern living standard, high quality finishings and a lively central location, the apartment is situated in a quiet street just steps from Náměstí Republiky Square with the Palladium shopping mall, tram stops and metro station. A 10 minute walk to Old Town as well as to Wenceslas Square.

The apartment features an entry hall, living room with fully fitted open kitchen, one bedroom, bathroom (bath tub, sink, toilet), guest toilet with sink and chamber. Air-conditioning, quality materials, bamboo flooring, heated tiles in the bathroom, central gas heating, sliding glass interior doors, alarm that can be connected to a security agency, video entry phone, camera system in the building. Photos are from the show flat. Interior 73.32 m².



* Area of the unit according to the Civil Code. The area consists of the sum total area of the entire unit bounded by perimeter walls.