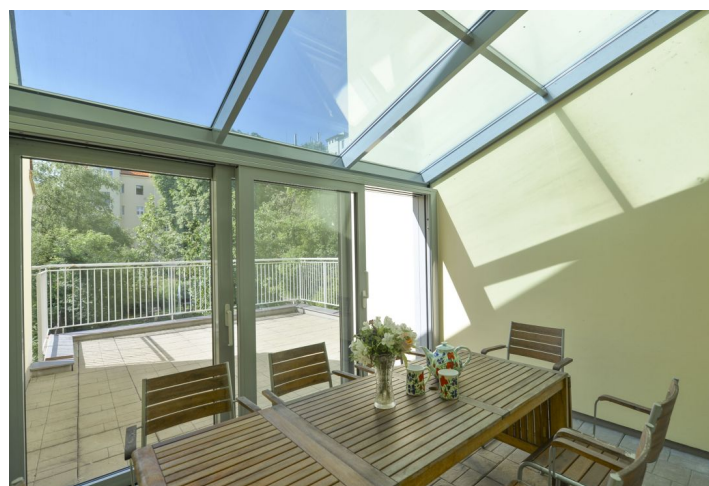




## Apartment One-bedroom (2+kk)

Rented

51 m<sup>2</sup>, Prague 7, Holešovice, Dobrovského





# Apartment One-bedroom (2+kk)

Rented

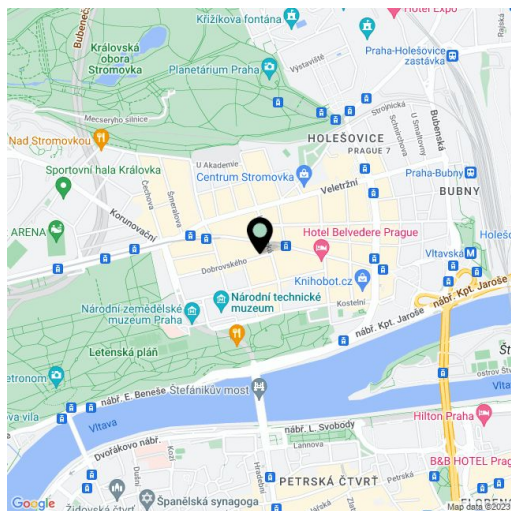
51 m², Prague 7, Holešovice, Dobrovského

Total area	91 m²
Floor area*	51 m²
Terrace	40 m²
Parking	-
Cellar	Yes
PENB	G
Reference number	14229
Available from	Immediately

Renovated unfurnished 1-bedroom upper first floor flat with a 11 m² glass winter garden and a 29 m² terrace, in a well kept building from the 1890's, also totally renovated and with a new lift. Located on a quiet street very close to Letná Park and Letenské Náměstí Square with easy tram connections to metro and the city center. Full amenities in the area, convenient to the airport and international schools.

This cozy and bright flat includes living room with a fully fitted open kitchen and breakfast bar, one bedroom with an en-suite bathroom (bathtub, sink, bidet, toilet) and direct access to the enclosed glass sunny winter garden, and onto the terrace facing the large green historical designed courtyard, guest toilet with sink, and entry hall.

Solid wood parquet floors throughout, high ceilings, security entry door, built-in storage, gas heating, washer, dishwasher, video entry phone, UPC and O2 connections. Cellar available. Nicely landscaped shared courtyard garden. Deposit for common building charges CZK 2,700/month. Gas and electricity will be transferred to the tenant. Parking available in the "blue zone". Available from May 2022.



\* Area of the unit according to the Civil Code. The area consists of the sum total area of the entire unit bounded by perimeter walls.