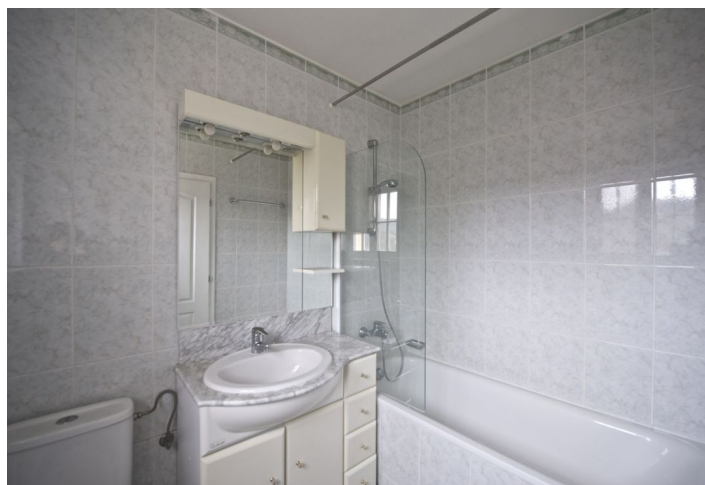




## House Three-bedroom (4+1)

150 m<sup>2</sup>, Prague 6, Nebužice, Na Malé Šárce

**Rented**





## House Three-bedroom (4+1)

Rented

150 m<sup>2</sup>, Prague 6, Nebušice, Na Malé Šárce

Plot	447 m <sup>2</sup>
Foot print	114 m <sup>2</sup>
Garden	313 m <sup>2</sup>
Parking	Garage parking.
Garage	Yes
Cellar	-
PENB	G
Reference number	11581
Available from	Immediately

Partly furnished 3-bedroom 2-bathroom semidetached house with a garden is a part of a residential complex in the beautiful surroundings of Nebušice, Prague 6, directly adjacent to the lovely nature area of Šárecké Valley. Pleasant and peaceful location offers nice family living with a good environment for children, excellent access to the city center and the prestigious International School of Prague within walking distance.

It has been well thought out to provide good closet space for coats and shoes at the entrance, and built in closets in the bedrooms, and a laundry room with washer and dryer. On the ground floor there is a living room with doors to the patio and garden, kitchen equipped with appliances (dishwasher, fridge/freezer, gas stove top and electric oven), guest toilet, and storage closet. On the first floor, there are three bedrooms, two bathrooms, (master bedroom with bath en-suite).

Additional conveniences and features include attic storage, hardwood floors throughout, gas heating, satellite connection. The house comes with a garden furniture. The garden has an automatic watering system and the house has a boiler. Each house in the community is connected to 24-hour security service on the premises, private satellite TV connection, and is serviced by private road maintenance. Very pleasant setting, ideal for families. Deposit for utilities and building charges CZK 8,000/month. Available from of February 2020.

