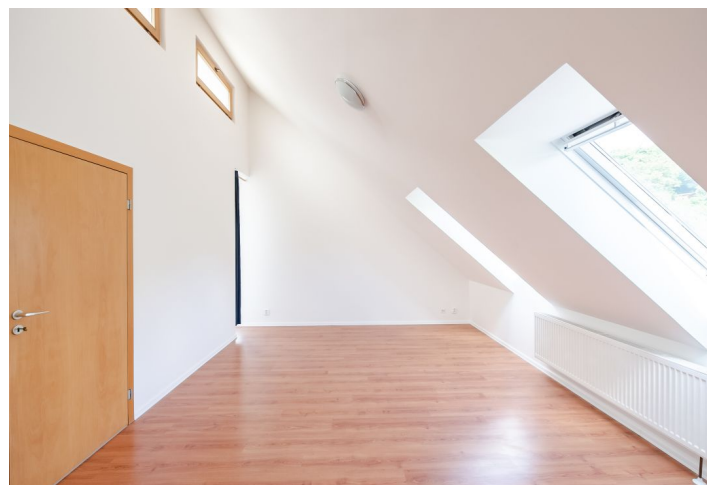
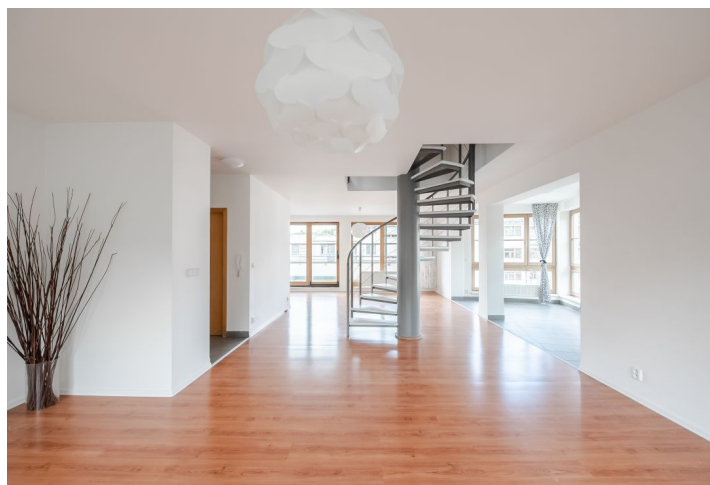
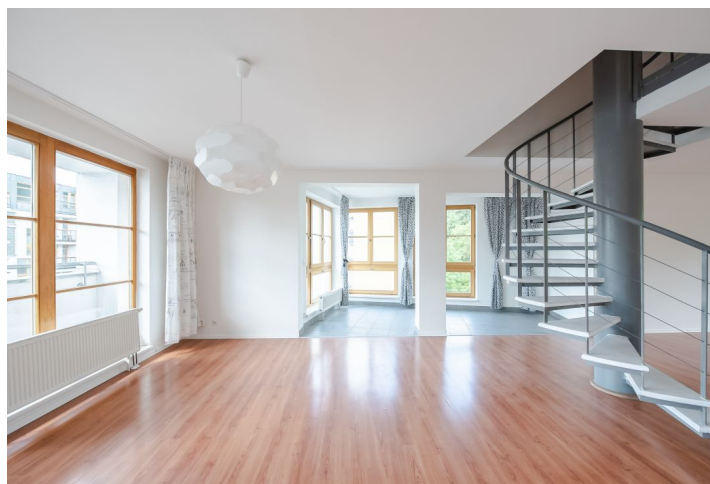




## Apartment Three-bedroom (4+kk)

Rented

165 m<sup>2</sup>, Prague 5, Smíchov, Randova





# Apartment Three-bedroom (4+kk)

Rented

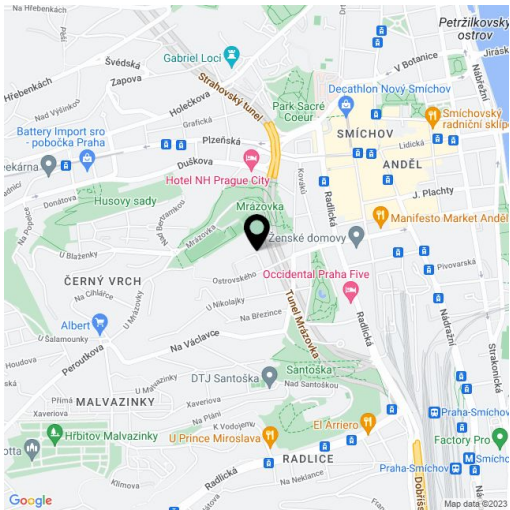
165 m², Prague 5, Smíchov, Randova

Total area	195 m²
Floor area*	165 m²
Terrace	30 m²
Parking	One parking space included in the rent. Second available for CZK 2000/month.
Cellar	Yes
PENB	D
Reference number	11238
Available from	Immediately

This 3-bedroom terraced split-level flat with a common garden and children's playground, on the 5th and 6th floor of a modern residential project with underground parking. Located in a quiet green residential neighborhood within quick reach of the Deutsche Schule Prag, French School and the Nový Smíchov shopping mall, with good connections to the city center via public transportation - the nearby Anděl metro station and trams.

The flat features a spacious living room with floor to ceiling windows and access to the terrace, open-plan fully fitted kitchen, toilet with sink and storage. There are 3 bedrooms on the second level - two of them with access to the terrace, bathroom with bathtub, shower, toilet, bidet and two sinks. Cellar available.

Central heating, blinds, washer, dishwasher. One underground parking space included in the rent, second one available for CZK 2000/month. Deposit for common building charges, heating, water and electricity consumption: CZK 5500/month.



\* Area of the unit according to the Civil Code. The area consists of the sum total area of the entire unit bounded by perimeter walls.