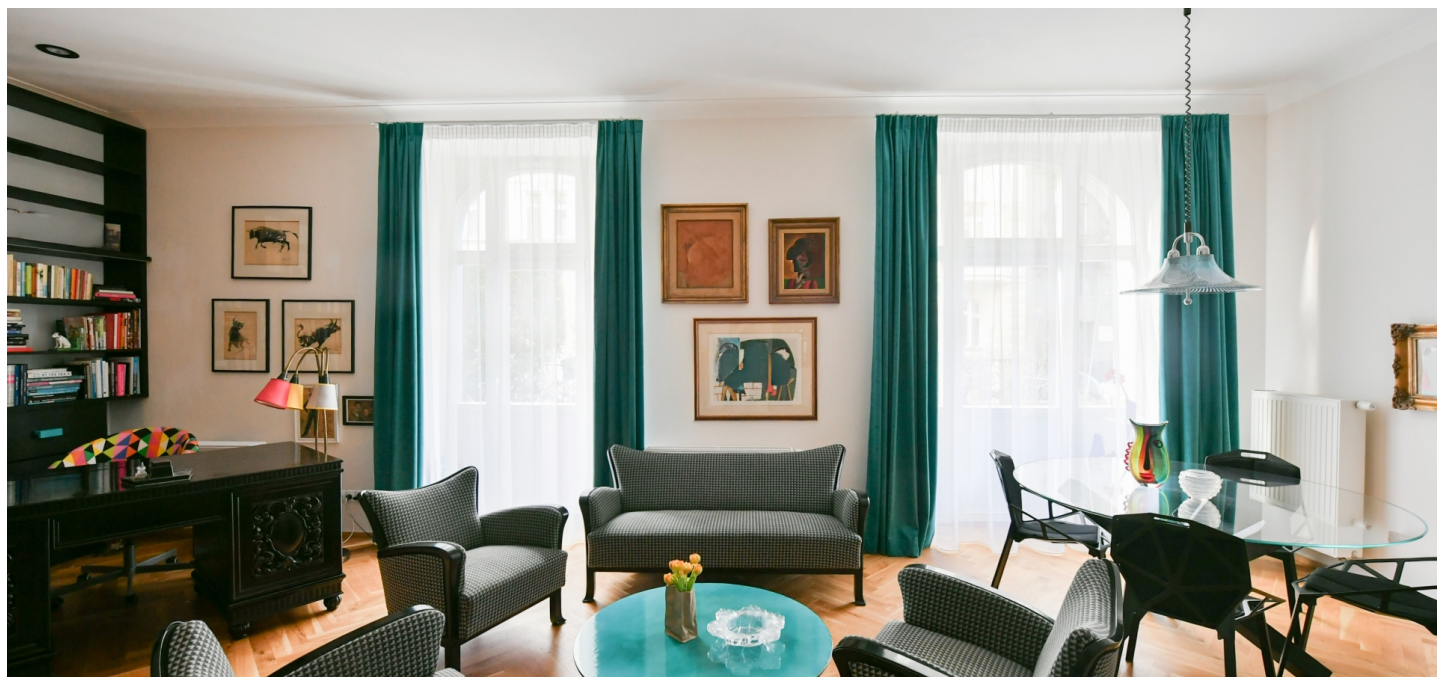




Apartment Two-bedroom (3+kk)

€ 2 055 | CZK 50 000

111 m², Prague 7, Bubeneč, Šmeralova





Apartment Two-bedroom (3+kk)

€ 2 055 | CZK 50 000

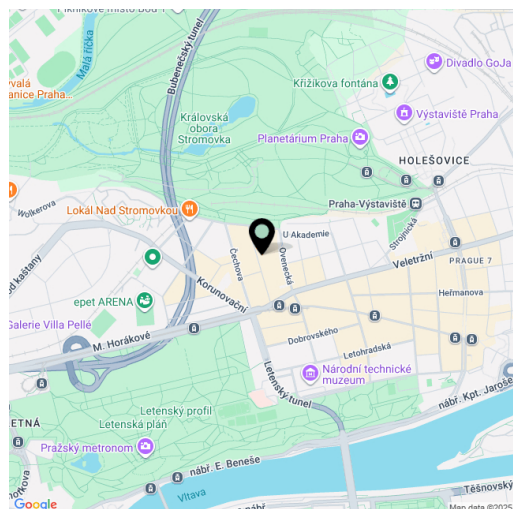
111 m², Prague 7, Bubeneč, Šmeralova

Total area	111 m²
Front garden	25 m²
Garden	80 m²
Parking	-
Cellar	-
Service price	Monthly deposit for services, water, and heating: CZK 6,000. Electricity is billed separately.
PENB	G
Reference number	111611
Available from	Immediately

This fully furnished air-conditioned 2-bedroom 2-bathroom apartment boasts a front garden, a back garden and a winter garden. Situated on the ground floor of a completely renovated apartment building set on a quiet street mere steps from Stromovka Park, the largest park in Prague, a 15 min. walk to the city center through another popular Prague park - Letná, and not far from Prague Castle. This highly sought-after location offers complete amenities and very quick access to the city center - a tram stop is one minute from the building and it's only a few stops to the Hradčanská (line A) and Vltavská (line C) metro stations. Conveniently located for the airport and numerous international schools.

The interior features a spacious living room with a fully fitted open plan kitchen and access to the **front garden**, and a master bedroom with a **walk-in closet**, an en-suite bathroom (walk-in shower, **massage bath**, bidet, toilet) and a **winter garden** with access to the **back garden**. There is a study/bedroom with access to the back garden, a family bathroom (walk-in shower, toilet), and an entrance hall.

Air-conditioning, tasteful combination of modern furniture with antique pieces, new **hardwood parquet floors**, **terazzo floor**, tiles, central heating, washing machine, dishwasher, microwave oven.



* Size of the unit according to the Housing Act.

The area consists of the sum total of the internal area of every room.