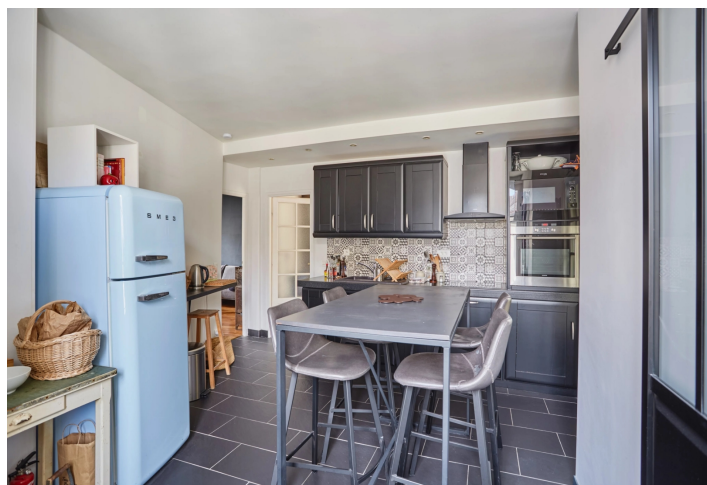




## Apartment One-bedroom (2+1)

€ 790 000 | CZK 19 228 600

52.9 m², Paris, Île-de-France





# Apartment One-bedroom (2+1)

€ 790 000 | CZK 19 228 600

52.9 m², Paris, Île-de-France

Total area	53 m²
Parking	-
Cellar	Yes
PENB	E
Reference number	111582

\* Area of the unit according to the Civil Code. The area consists of the sum total area of the entire unit bounded by perimeter walls.

This two-room apartment is located on the second floor of a beautifully renovated mid-19th-century building, directly opposite the famous historic Moulin de la Galette, on the legendary Rue Lepic in the heart of Paris's iconic Montmartre district.

The interior comprises a living room with an open view of **Place Marcel Aymé** and the **Moulin de la Galette**, a separate kitchen with a dining area, a bedroom, and a bathroom with a shower and toilet. The apartment also includes a cellar.

Features include a coded entry system and an intercom.

**Montmartre** is like a village in the heart of Paris, a district rich in history that reflects the city's past. At the top of its narrow, winding streets carefully set on the Butte Montmartre hill stands the famous **Sacré-Cœur** Basilica. Rue Lepic, located in the heart of Montmartre, together with the Moulin de la Galette, has become an iconic gathering place for Parisian bohemians.

The apartment is offered for sale with a lease valid until the end of July 2026.

Floor area: 52.9 m².