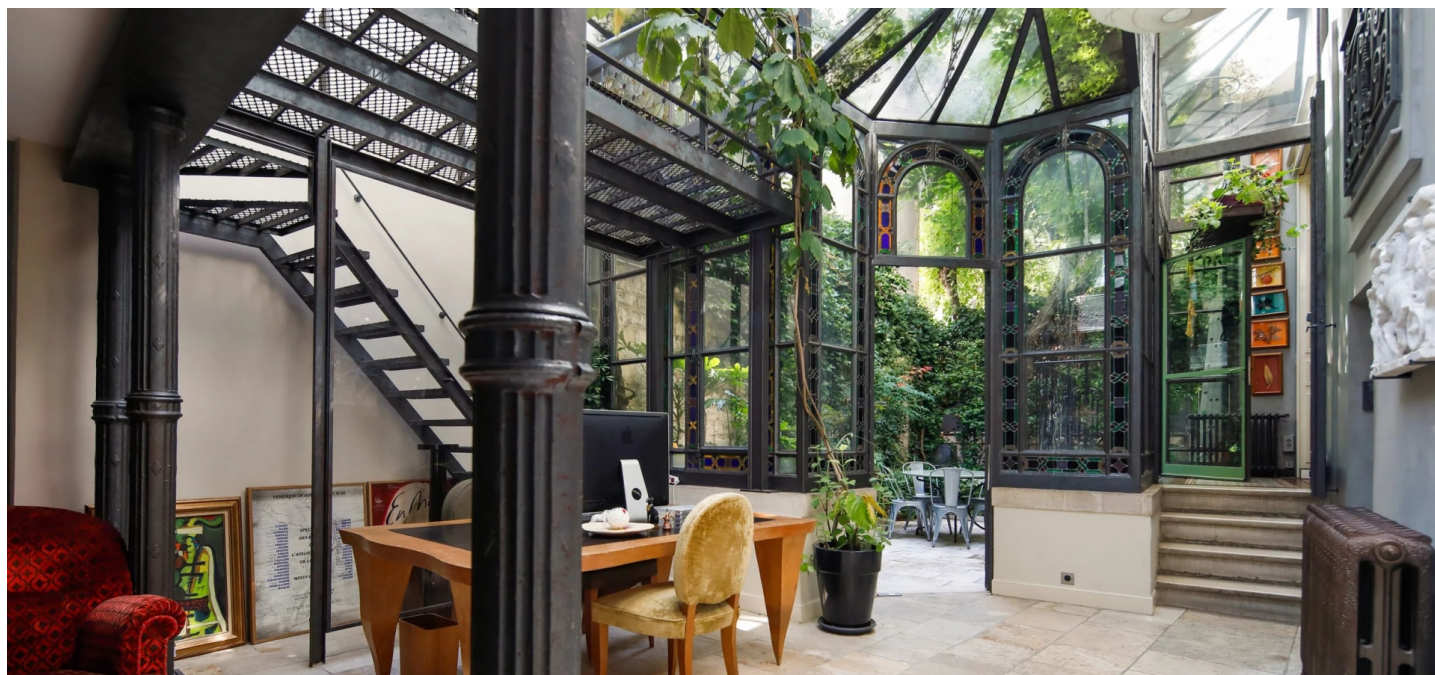




## House Six-bedroom (7+1)

637 m², Paris, Île-de-France

€ 9 500 000 | CZK 230 802 500







# House Six-bedroom (7+1)

€ 9 500 000 | CZK 230 802 500

637 m², Paris, Île-de-France

Total area	637 m²
Plot	630 m²
Garden	15 m²
Floor area	617 m²
Terrace	20 m²
Parking	Two parking spaces.
Cellar	Yes
PENB	E
Reference number	111517

A stylish, sun-filled family home with a private garden, terrace, and parking is situated on a charming Parisian lane in the 14th arrondissement, in the southern part of the French capital, within easy reach of the artistic Montparnasse district and the expansive Parc Montsouris.

The residence offers an exceptionally rich composition of spaces, designed to meet even the most demanding expectations for **comfortable living**. It includes a total of **six spacious bedrooms**, each complemented by **walk-in closets** and bathrooms, providing ample privacy for every family member. The atmosphere of the home is enhanced by **representative living rooms**, a **formal dining room**, a library, and a **spacious veranda**, ideal for social gatherings. Operational and technical facilities include **cellars**, laundry rooms, a workshop, and extensive storage areas, offering versatile use.

The grand impression is accentuated by **six-meter-high ceilings** and a **functional fireplace**, while large double-glazed windows provide impressive views of the **green atrium** and the street. Additional amenities include a **small garden** hidden from public view, a **terrace**, and **two parking spaces**.

The **side street** is part of a sought-after residential area on the Left Bank of the Seine, known for its **peaceful atmosphere** and rich cultural and sporting offerings. The location is enhanced by one of Paris's most beautiful green spaces, **Parc Montsouris**, as well as several smaller parks. The 14th arrondissement enjoys an ideal location with **easy access to both** Orly and Charles de Gaulle **airports**.

Living area: 617 m²; terrace: 20 m²; garden: 15 m².

