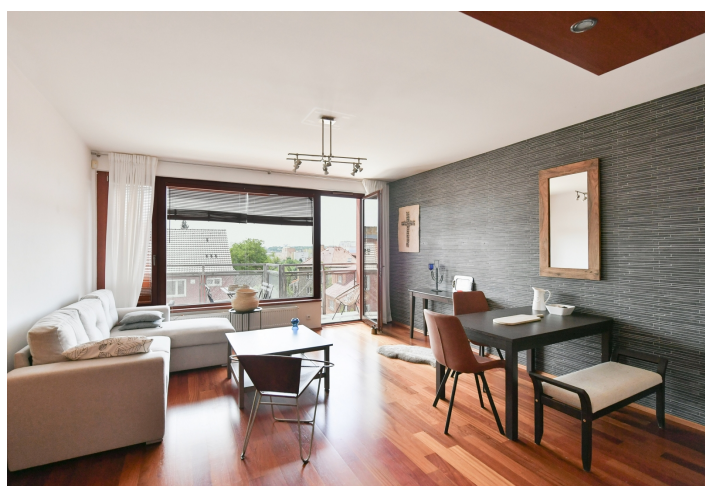
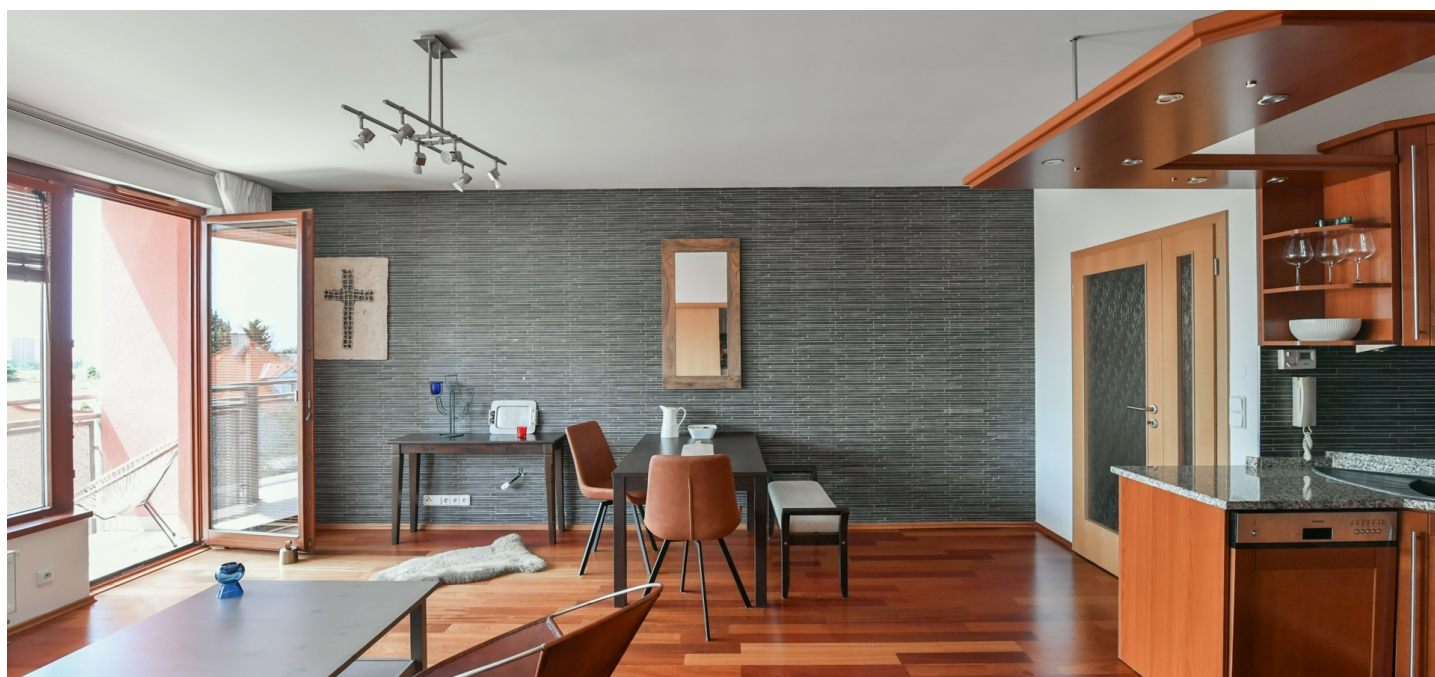




Apartment Two-bedroom (3+kk)

Rented

69 m², Prague 6, Řepy, Čistovická





Apartment Two-bedroom (3+kk)

Rented

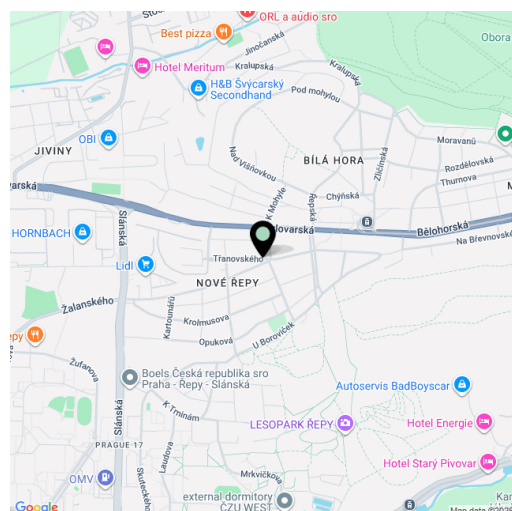
69 m², Prague 6, Řepy, Čistovická

Total area	77 m²
Floor area*	69 m²
Loggia	8 m²
Parking	A garage parking space in the underground garage
Cellar	Yes
Service price	Monthly deposit for services and water: CZK 4,500. Electricity and gas are billed separately.
PENB	C
Reference number	111372
Available from	Immediately

This furnished south-facing 2-bedroom apartment with a spacious enclosed balcony is situated on the 3rd floor in a building that is part of the Bělohorské Zahrady residential development in Prague 6. The gated complex features a 24/7 reception, security, and a shared garden with a children's playground. Located in a quiet part of Řepy, right next to the Břevnov district, offering full amenities, restaurants and shopping centers, and convenient access to both the city center and airport. A private passage from the complex leads directly to the adjacent supermarket. Sports enthusiasts will appreciate the nearby multi-purpose sports facility with a swimming pool, wellness, gym, and sports hall, as well as the nearby Active Forest Park Řepy and Hvězda Game Reserve, accessible by a pleasant walk past Bílá Hora. Public transport is provided by buses and trams with direct connections to metro lines A and B. Traveling by car is made easy by the nearby access to the Prague Ring Road and the D5, D6, and D7 highways.

The interior features a living room with a fully fitted open plan kitchen and access to the enclosed balcony, two bedrooms (facing south and east), a bathroom with a **massage bathtub** and a toilet, a separate guest toilet, and an entrance hall.

High-standard materials, Brazilian hardwood floors, large-format tiles, **stone wall cladding**, **wooden windows** with double glazing, security fire-rated entrance door, built-in wardrobes in the hall and one bedroom, gas boiler, washer/dryer, wooden Sykora kitchen with a granite counter top and Siemens appliances, dishwasher, microwave oven, alarm system connected to a central monitoring station via the building's security service, **cellar**, elevator. A spacious **garage parking** space is included in the rent.



* Size of the unit according to the Housing Act.
The area consists of the sum total of the internal area of every room.