



Apartment Three-bedroom (4+kk)

€ 3 176 294 | CZK 77 311 000

190 m², Miami, Florida, Brickell Avenue





Apartment Three-bedroom (4+kk)

€ 3 176 294 | CZK 77 311 000

190 m², Miami, Florida, Brickell Avenue

Total area	226 m²
Floor area*	190 m²
Terrace	36 m²
Parking	Two garage spaces.
Cellar	-
PENB	G
Reference number	11182

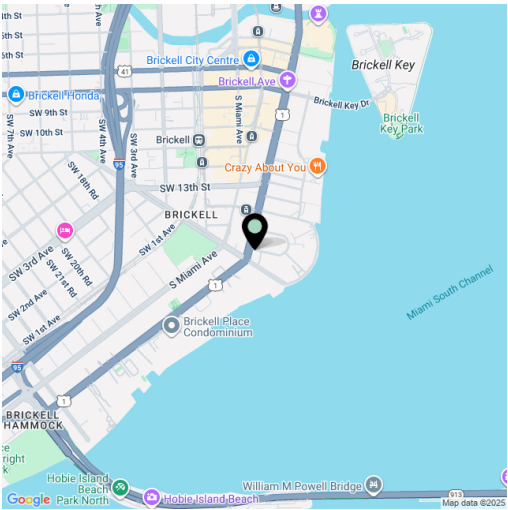
Breathtaking ocean and city skyline views from every angle are offered by this fully furnished three-bedroom residence with a terrace. The residence is located on a high floor of the prestigious boutique building Echo Brickell, in the luxurious Miami district on Florida’s southeastern coast.

The open floor plan seamlessly connects the spacious living and dining area with the kitchen. This open space, which has access to the **terrace**, is complemented by a master bedroom with a walk-in closet and en-suite bathroom, two additional bedrooms with their own closets, a bathroom, separate toilet, utility room, and laundry.

The state-of-the-art kitchen features **Wolf** appliances, elegant cabinetry, and **marble countertops**, while **marble flooring** throughout the apartment emphasizes the **clean, modern design**. Floor-to-ceiling windows flood the interior with **natural light** and provide **panoramic views**. The apartment includes **two garage parking spaces**, and residents can enjoy access to a **fitness center**, infinity **pool**, full food and beverage service, a 24-hour reception, and valet parking.

The residence is ideally located in the heart of Miami’s vibrant **Brickell** district, known as the “**Manhattan of the South**”. The area offers luxury boutiques, renowned restaurants, and wellness centers, with the popular **Biscayne Bay** recreational area nearby—perfect for water sports.

Floor area: 190 m², terrace: 36 m².



* Area of the unit according to the Civil Code. The area consists of the sum total area of the entire unit bounded by perimeter walls.



Apartment Three-bedroom (4+kk)

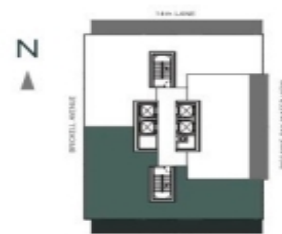
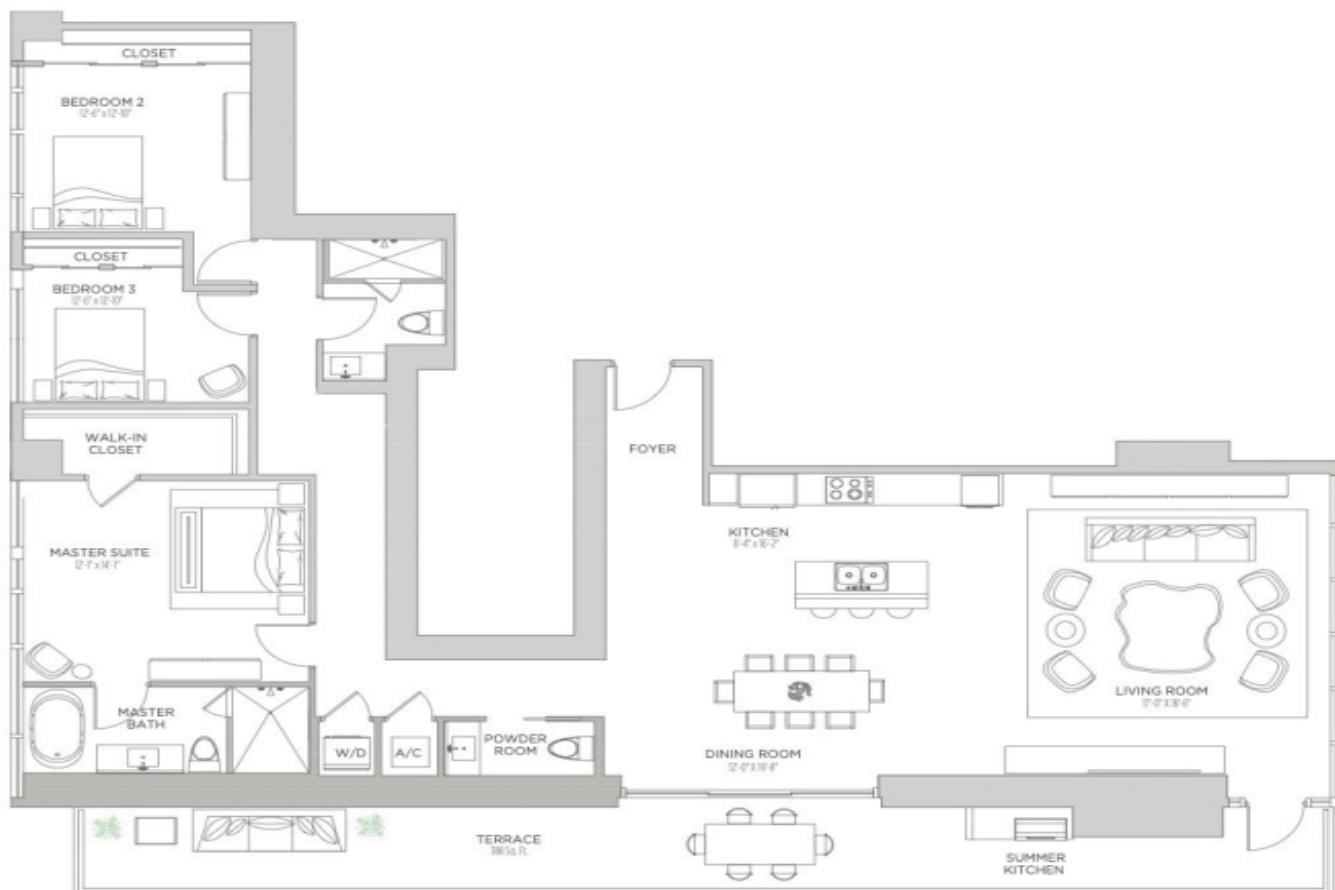
€ 3 176 294 | CZK 77 311 000

190 m², Miami, Florida, Brickell Avenue

ECHO
BRICKELL

RESIDENCE 4603

AC AREA: 2,045 S.F. | TERRACE 1: 388 S.F.
TOTAL: 2,433 S.F.



THESE DRAWINGS ARE CONCEPTUAL ONLY AND ARE FOR THE CONVENIENCE OF REFERENCE. THEY SHOULD NOT BE RELIED UPON AS REPRESENTATIONS, EXPRESS OR IMPLIED, OF THE FINAL DETAIL OF THE RESIDENCES. UNITS SHOWN ARE EXAMPLES OF UNIT TYPES AND MAY NOT REFLECT ACTUAL UNITS. STATED SQUARE FOOTAGES ARE RANGES FOR A PARTICULAR UNIT TYPE AND ARE MEASURED TO THE EXTERIOR BOUNDARIES OF THE EXTERIOR WALLS AND THE CENTERLINE OF INTERIOR PARTITION WALLS AND IN FACT VARY FROM THE AREA THAT WOULD BE DETERMINED BY USING THE DESCRIPTION AND DEFINITION OF THE UNIT SET FORTH IN THE DECLARATION (WHICH GENERALLY ONLY INCLUDES THE INTERIOR AIRSPACE BETWEEN THE PERIMETER WALLS AND EXCLUDES INTERIOR STRUCTURAL COMPONENTS). ALL DEPICTIONS OF APPLIANCES, PLUMBING FIXTURES, EQUIPMENT, COUNTERS, SOFFITS, FLOOR COVERINGS AND OTHER MATTERS OF DETAIL ARE CONCEPTUAL ONLY AND ARE NOT NECESSARILY INCLUDED IN EACH UNIT. CONSULT YOUR AGREEMENT AND THE PROSPECTUS FOR THE ITEMS INCLUDED WITH THE UNIT. DIMENSIONS AND SQUARE FOOTAGE ARE APPROXIMATE, WILL VARY WITH SPECIFIC UNIT TYPE, AND MAY VARY WITH ACTUAL CONSTRUCTION. ADDITIONALLY, MEASUREMENTS OF ROOMS SET FORTH ON ANY FLOOR PLAN ARE NOMINAL AND GENERALLY TAKEN AT THE GREATEST POINTS OF EACH GIVEN ROOM (AS IF THE ROOM WERE A PERFECT RECTANGLE). WITHOUT REGARD FOR ANY CUTOUTS, UNIT ORIENTATION AND WINDOWS (INCLUDING NUMBER, SIZE, ORIENTATION AND AWNINGS), BALCONY/LOGGIA (INCLUDING CONFIGURATION, SIZE AND RAILINGS/BALUSTRADES), STRUCTURE AND MECHANICAL CHASES MAY VARY. THE DEVELOPER EXPRESSLY RESERVES THE RIGHT TO MAKE MODIFICATIONS, REVISIONS, AND CHANGES IT DEEMS DESIRABLE IN ITS SOLE AND ABSOLUTE DISCRETION AND WITHOUT NOTICE.

