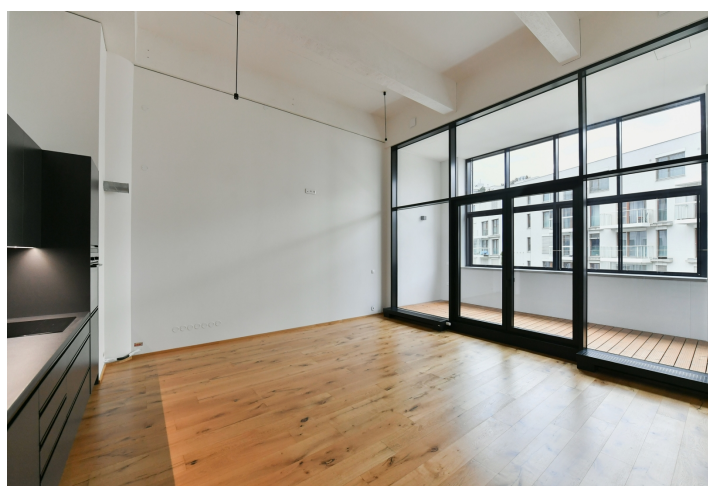




Apartment Two-bedroom (3+kk)

Rented

100 m², Prague 5, Košíře, Naskové





Apartment Two-bedroom (3+kk)

Rented

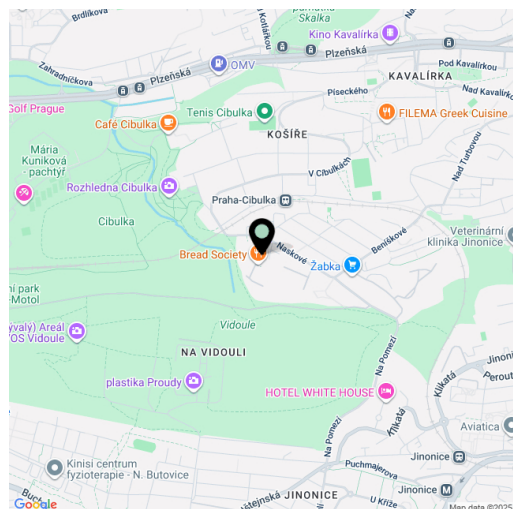
100 m², Prague 5, Košíře, Naskové

Total area	110 m ²
Floor area*	100 m ²
Loggia	10 m ²
Parking	Garage parking is available
Cellar	Yes
Service price	Monthly deposit for services, water, and heating: CZK 7,000. Electricity is billed separately.
PENB	B
Reference number	111102
Available from	Immediately

This unfurnished 2-bedroom loft type apartment with an enclosed balcony and two spacious galleries is on the 2nd floor of the recently built PARVI Cibulka residential project on the site of a former industrial hall. Amenities include a 24/7 reception and security, a fitness center, and a green park in the courtyard. Located on the very edge of the Vidoule nature preserve, near the Cibulka forest park, in a quiet residential area within easy reach of full amenities and services. Close to the Jinonice metro station, Cibulka train station with connections to Anděl and the city center, and within quick reach of the Anděl/Nový Smíchov commercial center. Conveniently located for the German School.

The apartment includes a living room with a fully fitted open plan kitchen and dining area, 2 bedrooms each with a **gallery**, a bathroom with a bathtub, a separate toilet with a bidet shower, and an entrance hall with a built-in wardrobe. The glassed-in non-heated **enclosed balcony** is accessible from the living room and one bedroom.

Hardwood floors, tiles, high ceilings, security entry door, automatic external blinds, central heating, washing machine, dishwasher, induction stove top, **cellar**, camera system, pram/bike storage, bike wash area. **Garage parking** is available at an additional fee.



* Area of the unit according to the Civil Code. The area consists of the sum total area of the entire unit bounded by perimeter walls.



Apartment Two-bedroom (3+kk)

100 m², Prague 5, Košíře, Naskové

Rented

