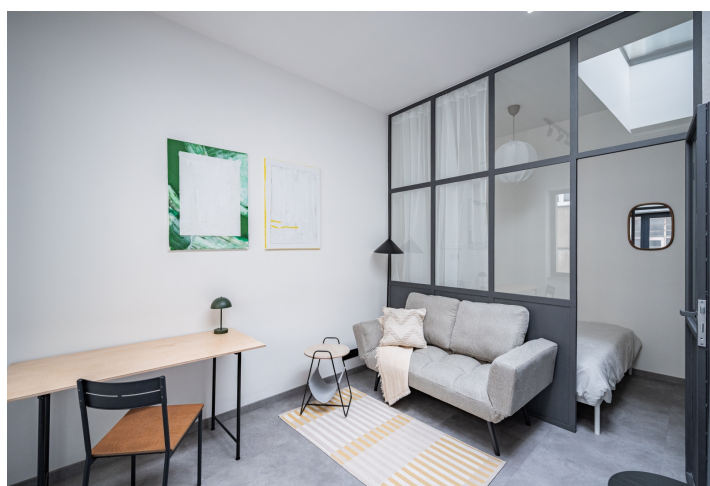
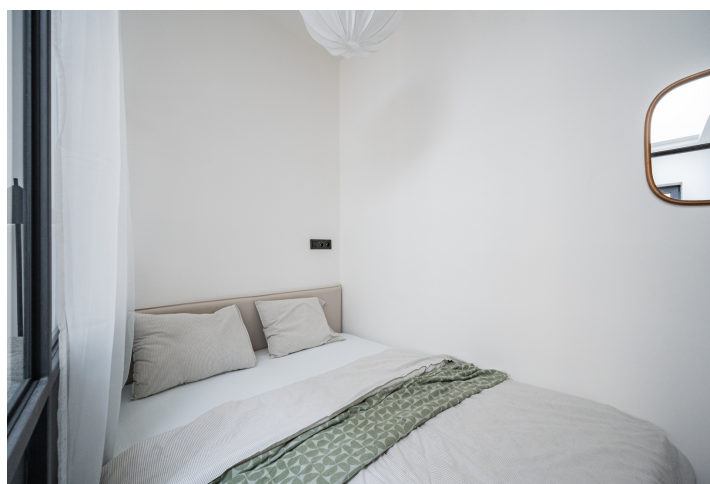




Apartment Studio (1+kk)

Rented

24 m², Prague 7, Holešovice, Ortenovo náměstí





Apartment Studio (1+kk)

Rented

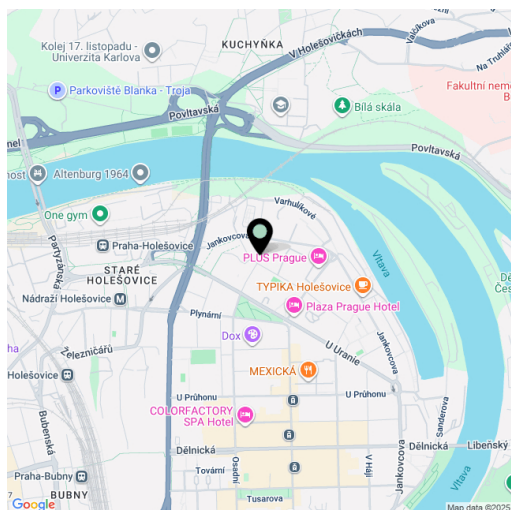
24 m², Prague 7, Holešovice, Ortenovo náměstí

Total area	24 m²
Parking	-
Cellar	-
Service price	Monthly deposit for service charges and water: CZK 1,500. Electricity is billed separately.
PENB	Not required
Reference number	111055
Available from	Immediately

This newly refurbished fully furnished studio apartment is on the 1st floor of a completely renovated atypical residential building with courtyard terraces and no elevator. Located in a sought-after neighborhood in Holešovice, just moments from a tram stop, one stop from the Nádraží Holešovice metro station and a few more from the Vltavská metro station. A quiet location with very good amenities and quick access to the city center, with the DOX - Center for Contemporary Art and La Fabrika Theatre nearby, and within easy reach of the Vltava embankment, numerous sports facilities, and the Holešovice bus and train station.

The apartment includes a living room with a fully fitted open plan kitchen and sleeping area separated by a glass wall, plus a bathroom with a walk-in shower and a toilet.

New equipment, **air-conditioning**, tiles throughout, skylight, electric heating, **underfloor heating** in the bathroom, **heat-pump**, dishwasher, induction stove top, video entry phone.



* Size of the unit according to the Housing Act.

The area consists of the sum total of the internal area of every room.