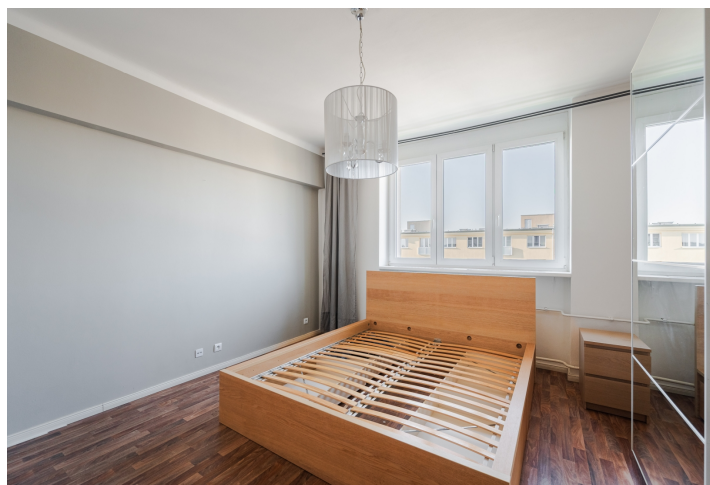




Apartment One-bedroom (2+1)

65 m², Prague 10, Vršovice, Litevská

Rented





Apartment One-bedroom (2+1)

Rented

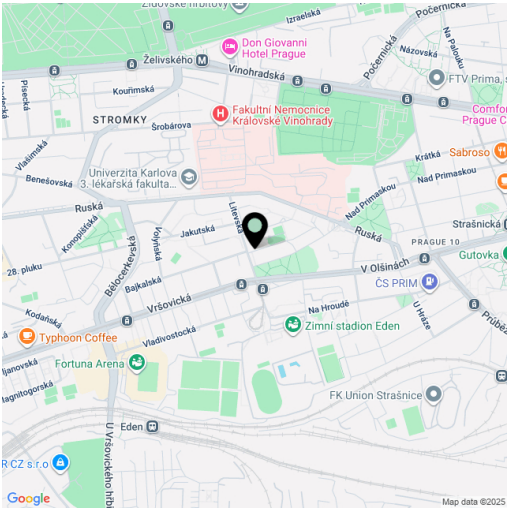
65 m², Prague 10, Vršovice, Litevská

Total area	65 m²
Parking	-
Cellar	Yes
Service price	Monthly deposit for services, water, and heating: CZK 4,500. Electricity is billed separately.
PENB	Not required
Reference number	110970
Available from	Immediately

This furnished 1-bedroom apartment is on the 5th floor of a well-maintained residential building with an elevator. Situated in Strašnice, Prague 10, near the park on Kubánské Square, within easy reach of the Strašnická metro station, good amenities, and services. Multiple sports facilities including the Eden winter stadium, a sports hall, a swimming pool, football and rugby pitches, and an athletics stadium offer rich opportunities for sports activities. There is a tram stop just a short distance from the building, and you can quickly connect to the South Connection Road by car.

The interior features a living room, a fully fitted kitchen with a dining area, a bedroom, a bathroom with a bathtub, a separate toilet, a storage/utility room, and an entrance hall.

Laminate floating floors, tiles, central heating, washing machine, dishwasher, cellar.



* Size of the unit according to the Housing Act.
The area consists of the sum total of the internal area of every room.