



Apartment One-bedroom (2+kk)

74.61 m², Brezno, Bystrá

€ 301 500 | CZK 7 338 510





Apartment One-bedroom (2+kk)

€ 301 500 | CZK 7 338 510

74.61 m², Brezno, Bystrá

Total area	79 m²
Floor area*	75 m²
Front garden	27 m²
Parking	Parking space for a fee of €15,000
Cellar	-
PENB	A
Reference number	110950



* Area of the unit according to the Civil Code. The area consists of the sum total area of the entire unit bounded by perimeter walls.

This modern 1-bedroom apartment with a front garden and cellar is located in the beautiful surroundings of the Low Tatras with excellent access to ski resorts and a golf course. Nearby, you will find a wellness center, a tennis court, a golf course, a bike rental, and a farm with horseback riding. The apartment combines comfort, elegance, and the tranquility of mountain nature and is ideal for either permanent living, recreation, or investment.

The apartment consists of a living room with a fully equipped custom-made kitchenette with **Gorenje** appliances, a bedroom area, a bathroom with a shower, a toilet, and an entrance hall. The living room opens onto a **front garden** with a view of the greenery. It is sold including built-in furniture. The apartment also has a **cellar**.

The apartment features **triple-glazed aluminum windows**. A parking space in the garage can be purchased for an additional €15,000.

The project is located in the heart of the Low Tatras and offers a wide range of opportunities for rest and active relaxation. Nearby, there is a **wellness center**, **tennis court**, golf course, bike rental, and a nearby farm with horseback riding. This is one of the most sought-after recreational areas in Central Slovakia, located in close proximity to the **Ski Jasná Chopok** and Ski Tále ski resorts, Lake Krpáčovo, the Partizán hotel, and several restaurants and sports attractions.

Price does not include furniture.

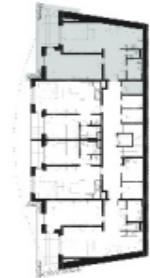
Interior 74.6 m², front garden 27 m², cellar 4.35 m²



Apartment One-bedroom (2+kk)

€ 301 500 | CZK 7 338 510

74.61 m², Brezno, Bystrá



www.evergreentale.sk

EVERGREEN T A L E	
APARTMÁN E 1	
APARTMÁNOVÝ DOM E - Kľinček	
PODLAŽIE 1	
POČET IZIEB 2	
Bilancia plôch	
Predsievň	10,75 m²
Kuchynka	7,77 m²
Obývací izba	25,90 m²
Izba	23,09 m²
Kúpeľňa	5,52 m²
WC	1,58 m²
Úžitková plocha	74,61 m²
Predchádzajúca s terasou	26,95 m²
sklad	4,35 m²
Plocha spolu	105,91 m²