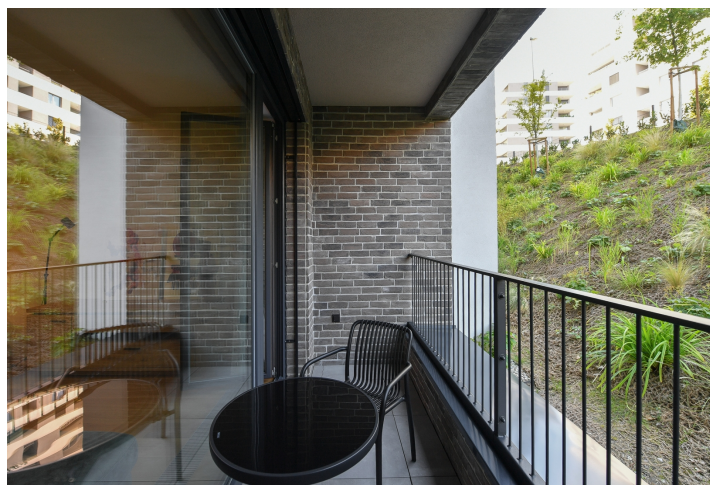




Apartment One-bedroom (2+kk)

Rented

56 m², Prague 5, Jinonice, Vladimíra Kobranova





Apartment One-bedroom (2+kk)

Rented

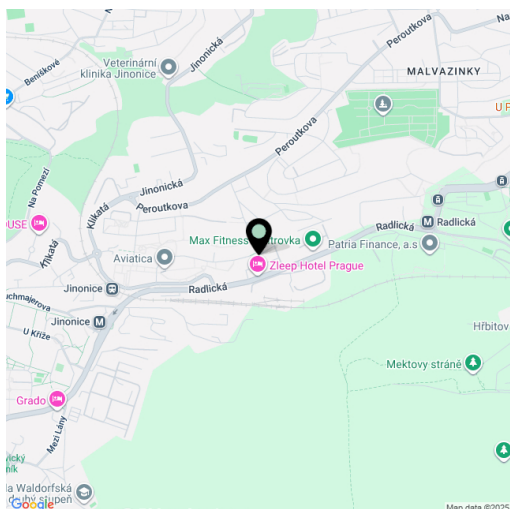
56 m², Prague 5, Jinonice, Vladimíra Kobranova

Total area	61 m²
Floor area*	56 m²
Loggia	5 m²
Parking	Garage parking
Cellar	Yes
Service price	Monthly deposit for services, water, and heating: CZK 4,700. Electricity is billed separately.
PENB	B
Reference number	110413
Available from	Immediately

This brand-new modern furnished 1-bedroom apartment with an enclosed balcony is situated on the ground floor of the New Waltrovka contemporary multi-purpose residential project with underground parking and a variety of shops, services, and restaurants. It is set in a quiet green neighborhood with quick access to the city center, just a few min. walk from the Jinonice metro station. Conveniently located for the French and German international schools and Anděl business district, within easy reach of green parks and multiple sports facilities including a golf course.

The interior features a living room with a fully fitted open plan kitchen and access to the enclosed balcony, a bedroom with a built-in wardrobe, a bathroom (bathtub, toilet with a bidet shower), and an entrance hall with a built-in wardrobe.

Hardwood floors, tiles, security entry door, automatic exterior blinds, central heating, dishwasher, alarm, **cellar**, shared bike storage room in the building. A **garage parking** space is included.



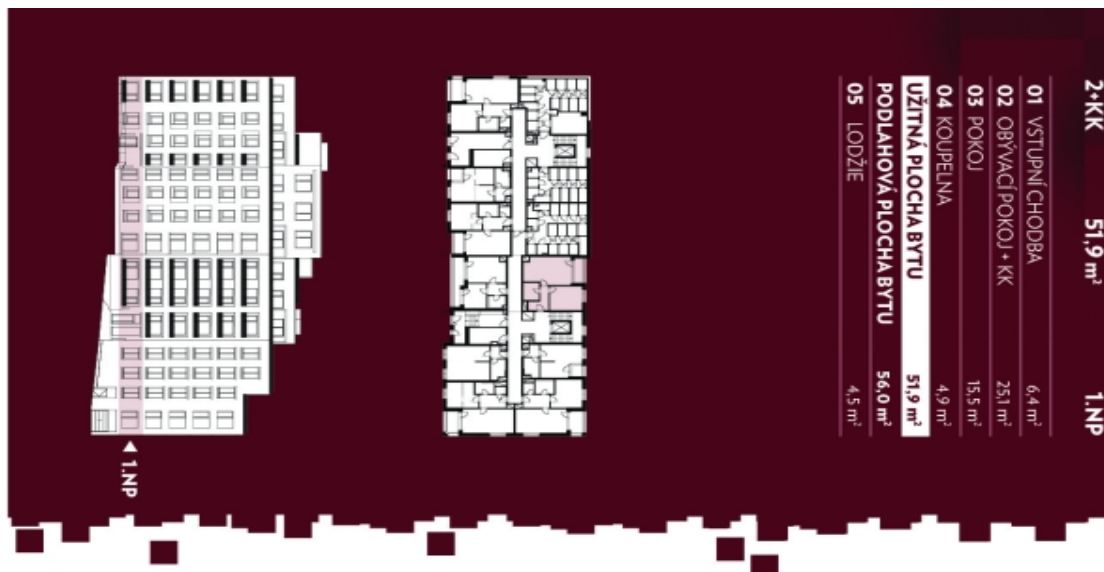
* Area of the unit according to the Civil Code. The area consists of the sum total area of the entire unit bounded by perimeter walls.



Apartment One-bedroom (2+kk)

56 m², Prague 5, Jinonice, Vladimíra Kobranova

Rented



Chybné číslo země kódu v číslu (zkontrolujte číslo země)

Poznámka: Plochy jednotlivých místností jsou pouze orientační. Vykazované zaoblené v podrobnosti (délky, šířky, výšky, atd.) není součástí detailů. Rozměry detailů, specifikace materiálů, povrchové úpravy a výškové jsou specifikovány ve stavebním projektu. Číslo je přílohou. Střechy o bodové úpravy. Developer si vyhrazuje právo na změny.

PENTA
REAL ESTATE