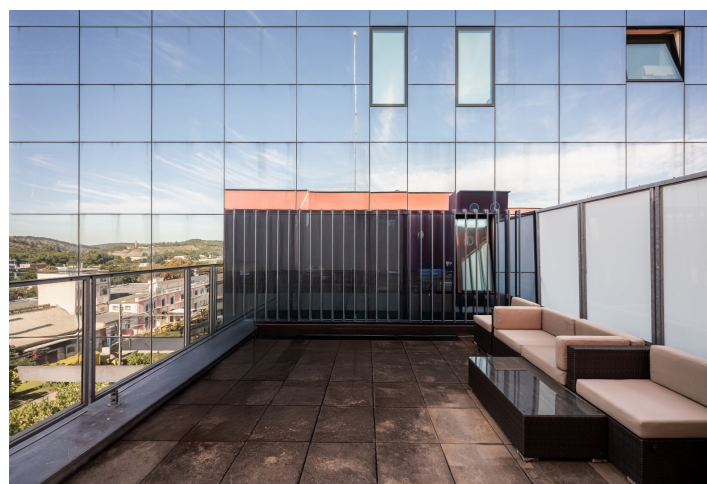




Apartment Two-bedroom (3+kk)

€ 694 330 | CZK 16 900 000

94 m², Prague 6, Bubeneč, Jednořadá





Apartment Two-bedroom (3+kk)

€ 694 330 | CZK 16 900 000

94 m², Prague 6, Bubeneč, Jednořadá

Total area	140 m²
Floor area*	94 m²
Terrace	46 m²
Parking	-
Garage	Yes
Cellar	3 m²
PENB	C
Reference number	110119

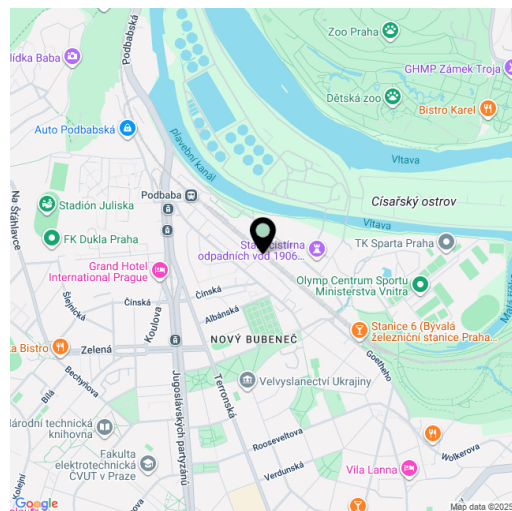
This furnished, air-conditioned apartment with four terraces is located on the top floor of a residential project in a pleasant part of Prague 6 – Bubeneč, close to Stromovka Park.

The layout consists of a living room with a kitchen and access to a **spacious main terrace**, two bedrooms each with their **own terraces**, a bathroom (with a window, bathtub, shower, and toilet), a separate toilet, and an entrance hall. The windows offer **views**, for example, of the **zoo** or **St. Clara's vineyard**.

The interior was designed by an **interior designer** and features **air-conditioning**, **wooden floors**, large-format ceramic floor and wall tiles, French windows (with **double soundproof glazing** facing the railway), custom-built fitted furniture, a fully equipped kitchen with a **granite countertop** and **Siemens** appliances and Next security entrance doors. The interior provides ample storage space, and the unit additionally includes a **storage room** on the floor serving as a cellar replacement. The apartment can be offered **fully furnished** upon request.

The area offers full civic amenities and excellent transport connections to Prague city center by tram and train. By car, you can quickly access the tunnel complex or the airport. A **safe bike path** runs close to the building, allowing access all the way to the center. Nearby are both public and private schools and kindergartens, a **sports complex with tennis and volleyball courts**, and an **indoor golf course**. The surroundings are full of playgrounds, and **Stromovka Park** is just a few steps away.

Floor area 94.1 m², terraces total 45.6 m², storage room 3.1 m².



* Size of the unit according to the Housing Act.
The area consists of the sum total of the internal area of every room.



Apartment Two-bedroom (3+kk)

€ 694 330 | CZK 16 900 000

94 m², Prague 6, Bubeneč, Jednořadá

