



Apartment Studio (1+kk)

€ 322 000 | CZK 7 822 990

25.44 m², Poprad, Vysoké Tatry, Tatranská Lomnica





Apartment Studio (1+kk)

€ 322 000 | CZK 7 822 990

25.44 m², Poprad, Vysoké Tatry, Tatranská Lomnica

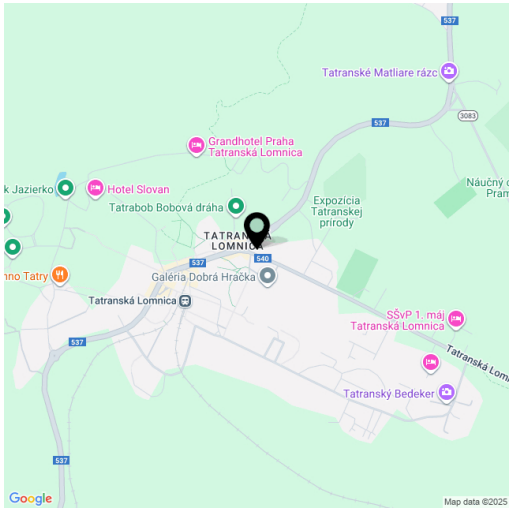
Total area	33 m²
Floor area*	25 m²
Balcony	8 m²
Parking	-
Cellar	-
Service price	378 EUR monthly
PENB	A
Reference number	110111

This newly built apartment, which combines a modern alpine style with timeless elegance, is part of a premium resort right by the cable car to Skalnaté pleso in the heart of Tatranská Lomnica. Situated on the top floor of a building completed in November 2024, it offers unobstructed views, absolute privacy, and an atmosphere that combines a sense of luxury with the intimacy of a mountain retreat. With a total area of 33.3 m², including a spacious covered balcony, it is an ideal place to relax after a day in the mountains, and the resort also features a spa.

The living area of the apartment thoughtfully connects the bedroom with the living room and is equipped with high quality furniture - a Saffron Phantasia double bed, a sofa bed, a custom-made wardrobe, a work desk, and a luxury **Bang & Olufsen** sound system. The bathroom has designer faucets, a shower with a Hansgrohe rain head, and silent ventilation.

Brushed and oiled **oak** floors, **spruce**-lined walls and ceilings, concrete trowels and warm LED lighting in a matte black design create a harmonious interior with a touch of mountain minimalism. The **wood-aluminium** triple glazing ensures excellent thermal insulation and there is also intelligent underfloor heating with remote control. The entrance is designed with a contactless system and a oak wood security door.

The future owner of the apartment will have access to the highest level of resort services - from the heated swimming **pool**, **Jacuzzi** and **sauna world**, to **massages**, **fitness**, restaurant, a wine bar, and a café. There is also a ski storage room, bike storage, children's play area and underground parking. The monthly cost is €378 incl. VAT. VAT is also added to the price of the apartment itself.



* Area of the unit according to the Civil Code. The area consists of the sum total area of the entire unit bounded by perimeter walls.



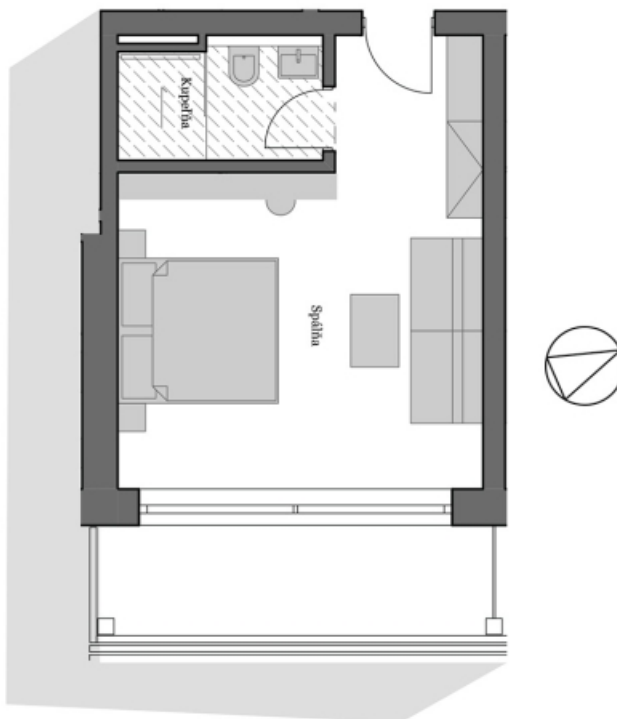
Apartment Studio (1+kk)

€ 322 000 | CZK 7 822 990

25.44 m², Poprad, Vysoké Tatry, Tatranská Lomnica



Plochy jednotlivých miestností sú orientované. Schéma podorysu predstavuje vzorové dispozičné riešenie apartmánu. Investor si vyhradzuje právo na drobné úpravy.



1+kk F.3.1

Objekt	F
Podlažie	3
Orientácia	V
Počet izieb	1+kk
Celková plocha	33,3 m²
Plocha interiéru	26,1 m²
Plocha exteriéru	7,2 m²
Spálňa	21,6 m²
Kúpeľňa	4,5 m²