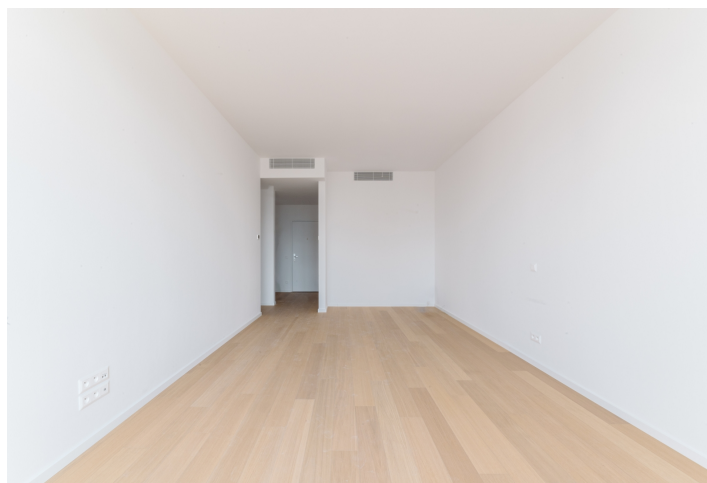
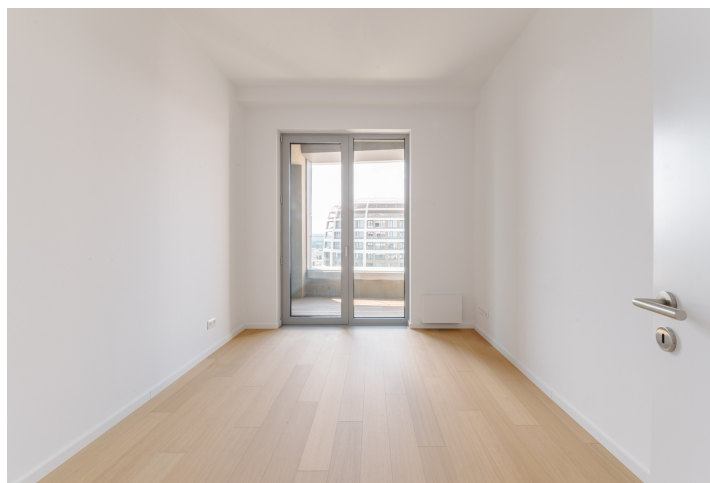
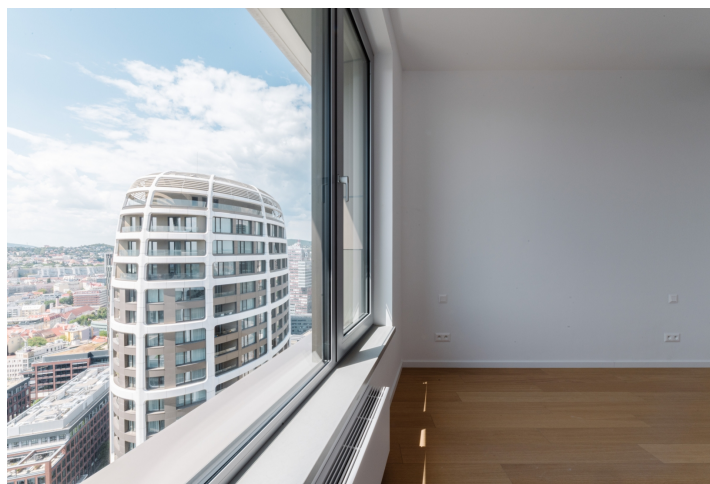




## Apartment Two-bedroom (3+1)

Ask for price

80.8 m², Bratislava I, Staré Mesto





## Apartment Two-bedroom (3+1)

[Ask for price](#)80.8 m<sup>2</sup>, Bratislava I, Staré Mesto

Total area	85 m <sup>2</sup>
Floor area*	81 m <sup>2</sup>
Loggia	4 m <sup>2</sup>
Parking	Yes
Cellar	-
PENB	A
Reference number	109936

\* Area of the unit according to the Civil Code. The area consists of the sum total area of the entire unit bounded by perimeter walls.

**Modern two-bedroom apartment with a loggia located on the 28th floor of the Sky Park development in the center of Bratislava. This residential complex, designed by world-renowned architect Zaha Hadid, is part of the new downtown and combines contemporary design, modern technology, and practical urban living. The apartment is situated in a tower with an elevator, and faces a direction that maximizes natural daylight.**

The apartment has a floor area of **80 m<sup>2</sup>** and consists of an entrance hall with built-in storage, a spacious living room connected to the kitchen with access to a **loggia** (4 m<sup>2</sup>), a master bedroom, an additional room (suitable as a study or guest room), two bathrooms (one with a bathtub, the other with a shower and toilet), a separate WC, and a hallway.

The apartment is equipped with underfloor heating, **large-format aluminum triple-glazed windows**, high-quality floors, and modern bathroom fittings. Standard features include fire safety entrance doors, a video intercom system, and **smart home** wiring ready for lighting, heating, and window blind control. The apartment is also **pre-wired for air-conditioning**. A parking space in the underground garage and a **cellar storage unit** are available for purchase.

Sky Park is located in an attractive part of Bratislava—on the border of Old Town and the new downtown area. Within walking distance are the Eurovea mall, the **Danube riverbank**, the Slovak National Theater, parks, restaurants, cafés, shops, schools, kindergartens, and sports facilities. The location offers full civic amenities and excellent transport accessibility.

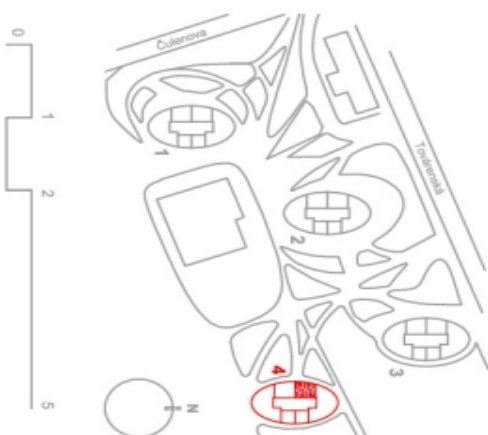
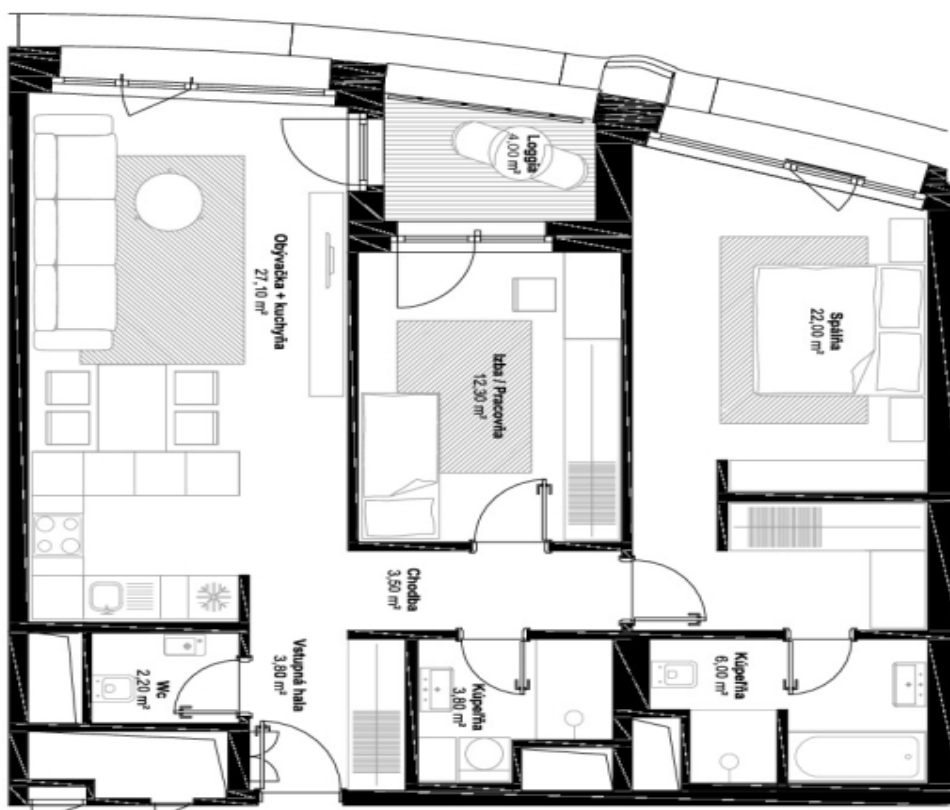


## Apartment Two-bedroom (3+1)

Ask for price

80.8 m<sup>2</sup>, Bratislava I, Staré Mesto

Pôdorys a rozmiestnenie vnútorného vybavenia bytu sú ilustračné. Uvedené rozmery sú predbežné a nemusia sa zhodovať s realizačným projektom. Do výmery bytu sa nezapočítava priestor pod pričkami. Zariadenovacie predmety nie sú súčasťou dodávky.



Veža	4
Poschodie	28
Počet izieb	3
Interiér	80.80 m <sup>2</sup>
Loggia	4.00 m <sup>2</sup>
Total	84.80 m <sup>2</sup>