



House Four-bedroom (5+1)

324 m², Prague 5, Lipence, U Lip

Sold



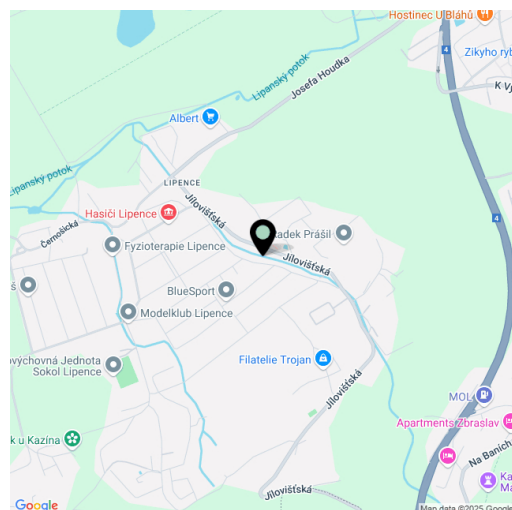


House Four-bedroom (5+1)

Sold

324 m², Prague 5, Lipence, U Lip

| | |
|------------------|----------------------------------|
| Total area | 324 m² |
| Plot | 1 164 m² |
| Foot print | 190 m² |
| Floor area | 288 m² |
| Parking | Garage and outdoor parking space |
| Cellar | Yes |
| PENB | D |
| Reference number | 109813 |



This cozy, well-lit family house with plenty of space is situated on a large corner plot in the quiet Prague district of Lipence, surrounded by greenery, close to a golf course and the edge of the Brdy Forests, yet still within easy reach of the city center.

On the ground floor, there is a living room with a **fireplace** connected by an arched opening to the dining room, which is further connected to the kitchen and pantry. The ground floor also includes a study, staircase hall, a guest toilet, an entrance hall, and a vestibule. The attic features 3 bedrooms, an airy bathroom, and a hallway. The master bedroom measures approximately 27 m² and includes a spacious **walk-in closet** and a **loggia**. In the basement, there is a **hobby room**, boiler room, storage room, utility room, and laundry with a drying area. Additional storage space is provided by an attic above the house and garage.

The house was built in 2005, constructed with Porotherm bricks and insulated. The roof is covered with Tondach ceramic tiles with a **chestnut glaze**. The custom-made **Euro windows** are double-glazed, with **wooden interior sills** and **copper exterior sills**. The roof windows are by Velux. The Next brand kitchen includes built-in **Siemens** appliances, including an induction hob. Heating is provided by a gas boiler. The house is equipped with an **Eaton smart energy management system** and a central key system. The property includes a **garage** for one car, a covered **outdoor parking space**, and a **large adjoining pergola** for outdoor dining. The automatically irrigated garden is bordered by a wooden fence and a decorative retaining wall made of **pink Slivenec marble**.

The district of Lipence, located on the southern edge of Prague between the **Berounka and Vltava rivers**, offers everything needed for comfortable family living: a kindergarten and elementary school, supermarket, several **sports facilities** including a **golf course, bike paths**, and beautiful **nearby nature parks for excursions**. Bus service connects to the Smíchovské nádraží metro station, and driving is convenient thanks to the R4 road and nearby access to the Prague Ring Road.

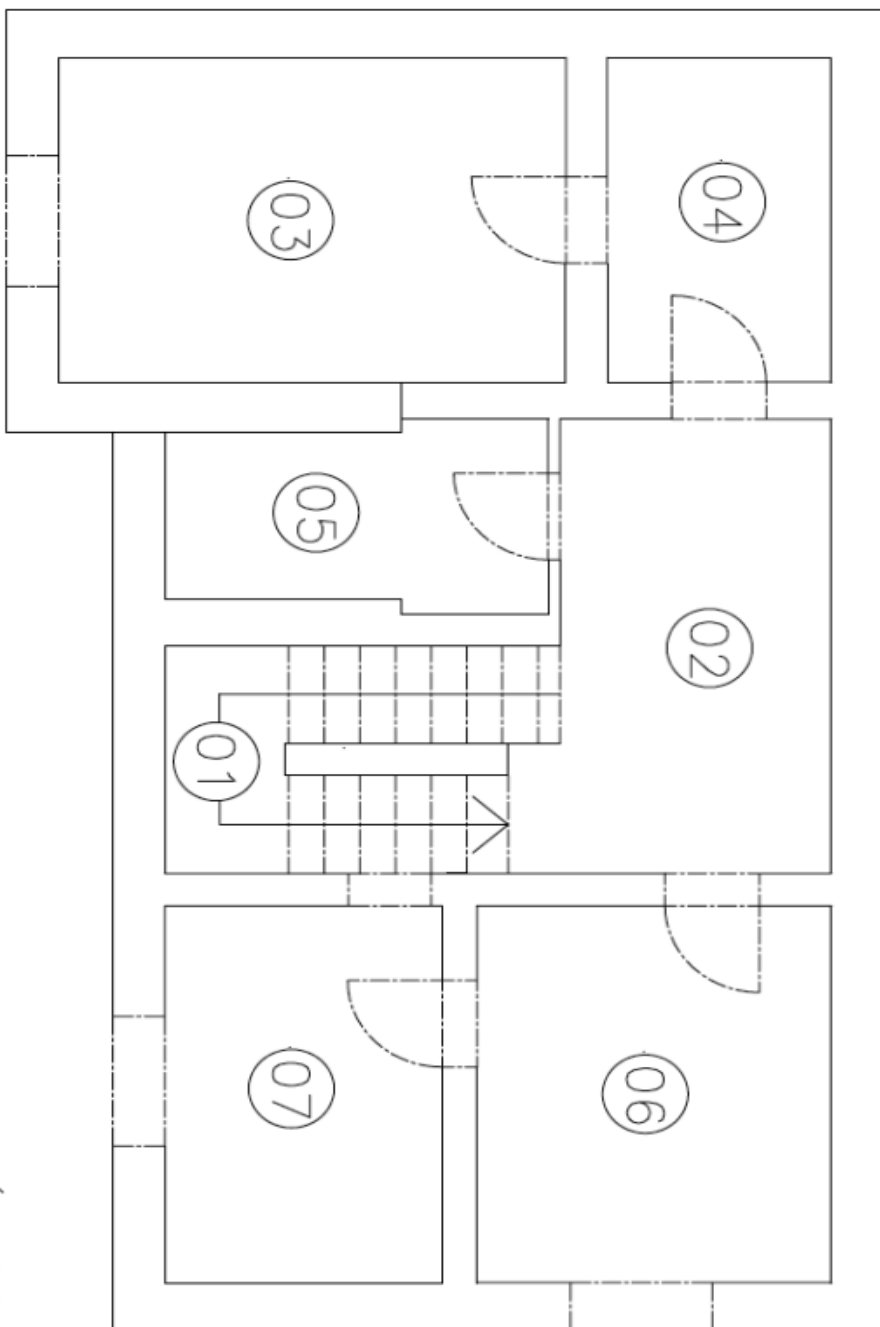
Total floor area of the house 288.24 m², separate garage 36 m², built-up area 190 m², plot 1,164 m².



House Four-bedroom (5+1)

324 m², Prague 5, Lipence, U Lip

Sold



— Půdorys suterenu

- 01 – Schodiště (5,44m²)
- 02 – Chodba (10,26m²)
- 03 – Hobby místnost (12,98m²)
- 04 – Kotelna (5,41m²)
- 05 – Komora (5,26m²)
- 06 – Prádelna, sušárna (10,70m²)
- 07 – Sklad (8,25m²)

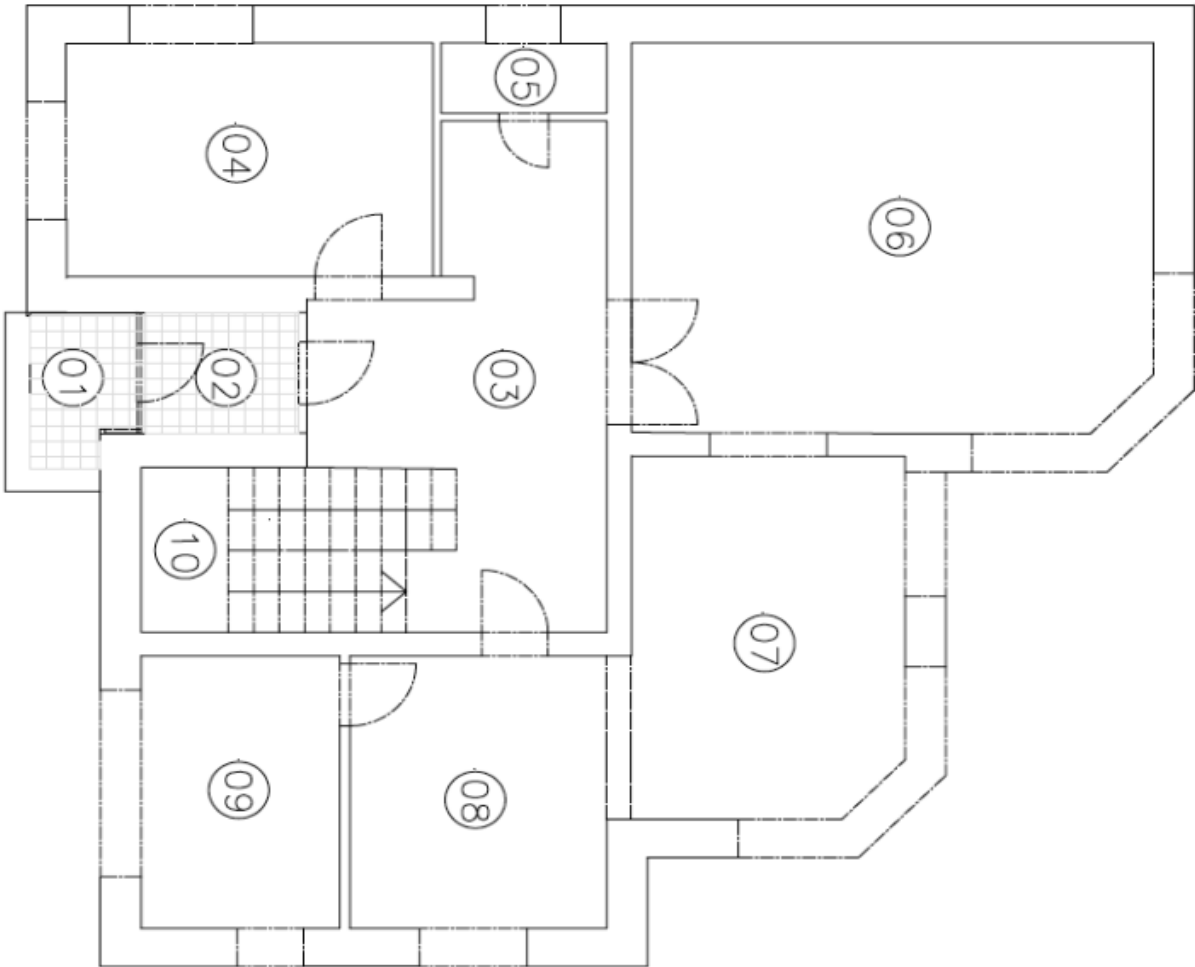


House Four-bedroom (5+1)

Sold

324 m², Prague 5, Lipence, U Lip

Půdorys přízemí



- 01 – Závětrí (2,28m2)
- 02 – Zádveří (2,82m2)
- 03 – Hala (17,23m2)
- 04 – Pracovna (13,33m2)
- 05 – WC (1,75m2)
- 06 – Obývací pokoj (31,31m2)
- 07 – Jídelna (16,26m2)
- 08 – Kuchyň (10,80m2)
- 09 – Komora (8,46m2)
- 10 – Schodiště (7,09m2)

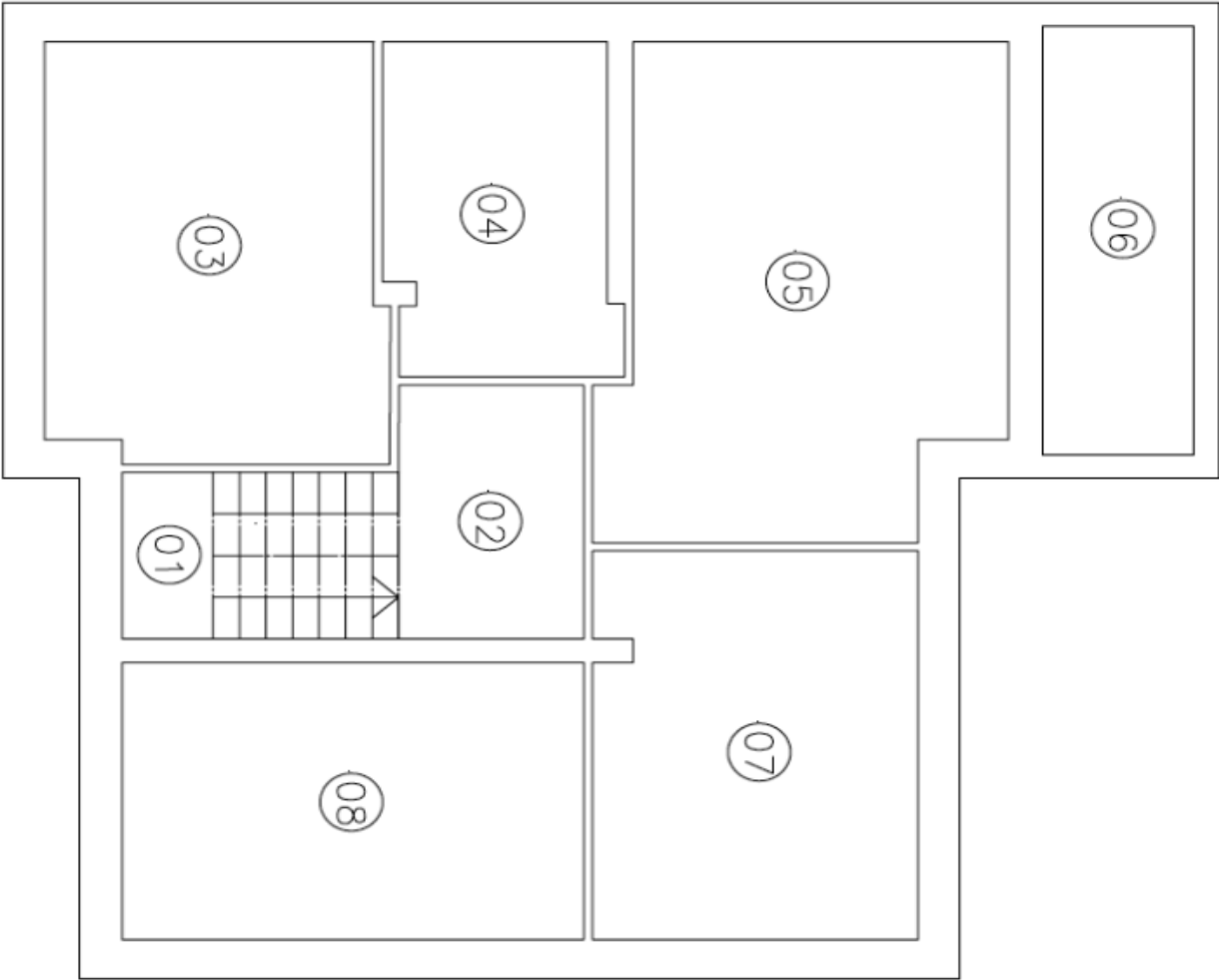


House Four-bedroom (5+1)

Sold

324 m², Prague 5, Lipence, U Lip

— Půdorys podkrovní



- 01 – Schodiště (6,75m2)
- 02 – Chodba (6,80m2)
- 03 – Dětský pokoj (20,34m2)
- 04 – Koupelna (10,77m2)
- 05 – Ložnice (26,79m2)
- 06 – Ložžie (9,74m2)
- 07 – Šatna (18,44m2)
- 08 – Dětský pokoj (18,83m2)