



Apartment One-bedroom (2+kk)

Rented

58 m², Prague 2, Nusle, Jaromírova





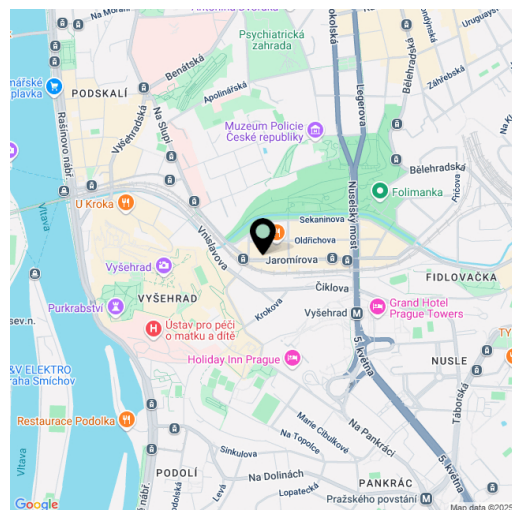
Apartment One-bedroom (2+kk)

Rented

58 m², Prague 2, Nusle, Jaromírova

Total area	58 m ²
Parking	-
Cellar	4 m ²
Service price	Monthly deposit for services, water, and heating: CZK 4,500. Electricity is billed separately (transferred to the tenant).
PENB	D
Reference number	109682
Available from	01.08.2026

This renovated, completely furnished 1-bedroom apartment with high ceilings and an elegant interior is on the 5th floor of a well-maintained renovated residential building with an elevator, situated on the border of Nusle and New Town, close to Vyšehrad, Folimanka Park, and the Vltava riverbank at Výtoň. The location provides everything you need — several cafés and restaurants are right by the building, and a supermarket is just a few steps away. Tram stops are in front of the building, with easy 5-minute access to the city center and metro stations. The area is enriched by abundant greenery, including nearby Folimanka Park, Na Bělce Garden, and Lumírovy Sady Garden, all of which connect to the historic grounds of Vyšehrad.



The apartment consists of a living room with a fully fitted open plan kitchen, a bedroom, a fitted **walk-in closet**, a bathroom including a walk-in shower and toilet, and an entrance hall. The unit is north-facing.

Oak floors, terrazzo-style tiling, flush interior doors by Sapeli with designer M&T handles, premium bathroom fittings by Grohe, Laufen, and Vitra, central heating, washing machine, **cellar**.

* Size of the unit according to the Housing Act.
The area consists of the sum total of the internal area of every room.



Apartment One-bedroom (2+kk)

58 m², Prague 2, Nusle, Jaromírova

Rented

Jaromírova 4

Číslo bytu	19
Typ	2+kk
Podlaží	5

TABULKA VELEKOSTI

19.1	chodba	7.9 m ²
19.2	koupelna	6.5 m ²
19.3	šatna	3.2 m ²
19.4	ložnice	10.3 m ²
19.5	obytňý prostor	25.5 m ²
světlé konstrukce		5.2 m ²

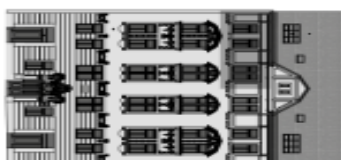
podlahová plocha bytu		58.4 m ²
K.19	sklep	3.5 m ²
celková plocha		61.9 m ²



Lokalita



Pohled z ulice Jaromírova 4



Plan podlaží



Vnitřní blok