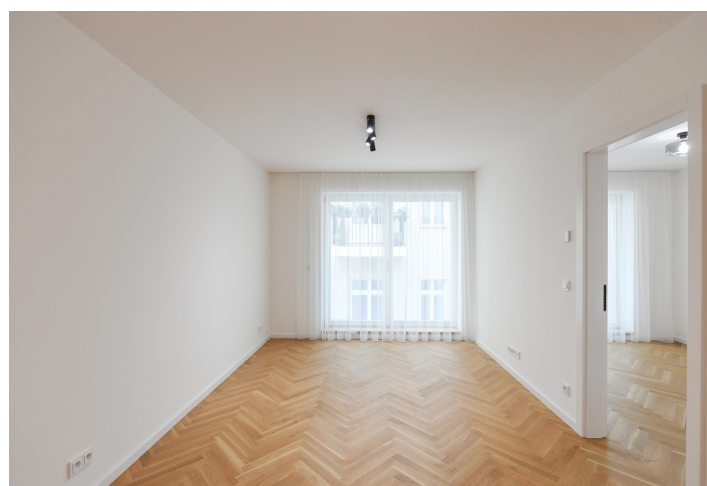




Apartment One-bedroom (2+kk)

Rented

52.2 m², Prague 2, Vinohrady, Varšavská





Apartment One-bedroom (2+kk)

Rented

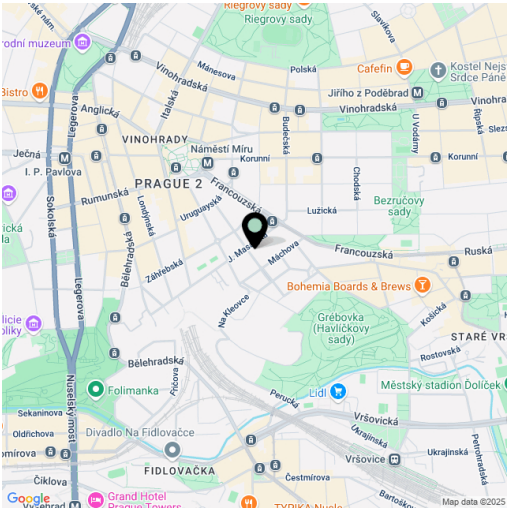
52.2 m², Prague 2, Vinohrady, Varšavská

Total area	52 m²
Parking	-
Cellar	-
Service price	Monthly deposit for services, water, and heating: CZK 3,500 for one person, extra person + CZK 1,300/month. Electricity is billed separately.
PENB	Not required
Reference number	109403
Available from	01.09.2026

This brand-new unfurnished apartment facing the courtyard, situated on the 2nd topmost floor of a newly built courtyard apartment building, is wonderfully located on a quiet street in the popular Vinohrady residential neighborhood of tree-lined streets and parks, sidewalk cafes, restaurants, bars, cultural venues and more, with a great atmosphere and Havlíčkovy Sady Park just down the street. Situated only a few min. walk from Náměstí Míru Square with a metro station and multiple tram links, only a short walk to the city center.

The interior features a living room with a fully fitted open plan kitchen, a bedroom with large built-in wardrobes, a bathroom (walk-in shower, toilet), and an entrance hall with built-in wardrobes.

Hardwood floors, tiles, new triple glazed windows, French windows, central heating, automatic exterior blinds, dishwasher, induction stove top, microwave oven, video entry phone. No elevator.



* Area of the unit according to the Civil Code. The area consists of the sum total area of the entire unit bounded by perimeter walls.