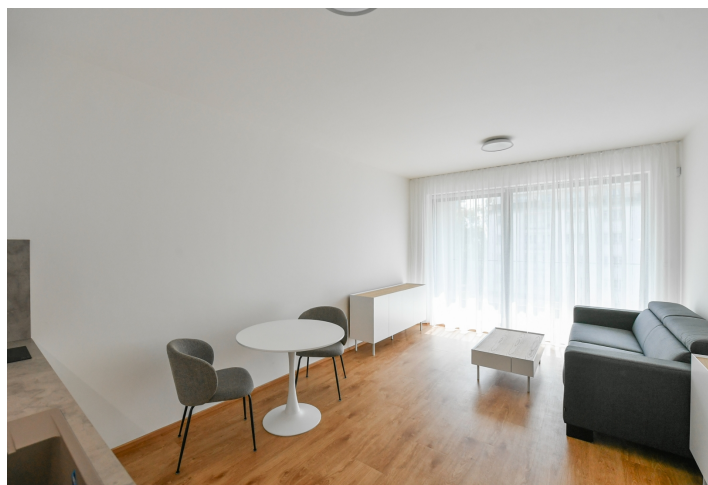




## Apartment Studio (1+kk)

32.6 m², Prague 3, Žižkov, Tetaurova

Rented





## Apartment Studio (1+kk)

32.6 m², Prague 3, Žižkov, Tetauerova

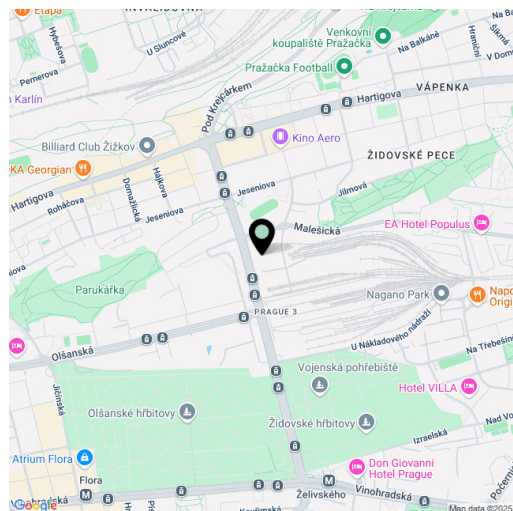
Rented

Total area	38 m²
Floor area*	33 m²
Loggia	6 m²
Parking	Garage parking
Cellar	Yes
Service price	Monthly deposit for services, water, and heating: CZK 3,000. Electricity is billed separately (transferred to the tenants).
PENB	B
Reference number	109402
Available from	Immediately

Benefiting from an enclosed balcony, this brand-new completely furnished air-conditioned studio apartment is on the 3rd floor of a new residential building with an elevator and a nicely landscaped courtyard with a park and playground. Situated in a rapidly developing area next to the Nákladové nádraží Žižkov (Žižkov freight railway station) with a new park, near Basilejské Square and close to the Parukářka and Židovské Pece parks. Located a few tram stops away from the Želivského and Palmovka metro stations, about 15 minutes by bus to the city center (bus stop is moments from the building).

The apartment includes a living room/bedroom with a fully fitted open plan kitchen and an **enclosed balcony** facing the street, a bathroom with a walk-in shower and a toilet, and an entrance hall with a built-in wardrobe.

**Air-conditioning**, vinyl floors, tiles, automatic exterior blinds, sofabed, central heating, washer, dryer, dishwasher, induction stove top, microwave oven, video entry phone, alarm, **cellar**. A **garage parking** space is included.



\* Area of the unit according to the Civil Code. The area consists of the sum total area of the entire unit bounded by perimeter walls.