



Apartment One-bedroom (2+kk)

€ 440 420 | CZK 10 700 000

59.54 m², Prague 5, Košíře, Plzeňská





Apartment One-bedroom (2+kk)

€ 440 420 | CZK 10 700 000

59.54 m², Prague 5, Košíře, Plzeňská

Total area	60 m²
Parking	-
Cellar	Yes
PENB	D
Reference number	109353

This new one-bedroom apartment with views of a green hillside is located on the 5th floor of a thoroughly renovated apartment building with an elevator. The Plzeňská 171 residential project, situated in Prague's Košíře district, meets modern standards for high-quality living in a sought-after location with all amenities within easy reach.

The layout of the apartment includes a living room with a kitchen, a bedroom, a bathroom with a bathtub, sink, toilet, and washing machine connection, a storage room, as well as an entrance hallway. The apartment comes with a cellar located in the building's lower level.

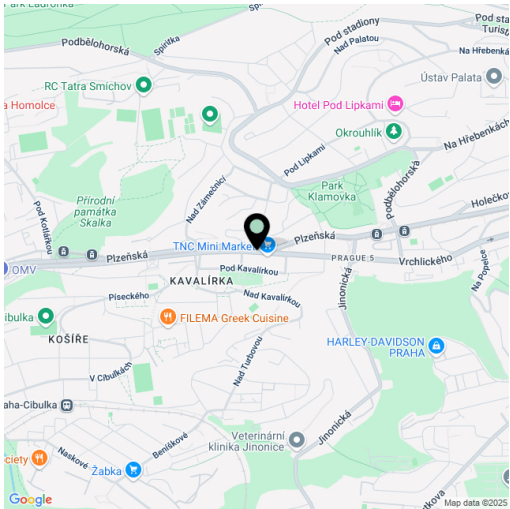
The apartment features high-quality standards, including oak-effect vinyl flooring, historic-style panelled interior and entrance doors, La Ceramica Trust tiles and wall cladding, Grohe bathroom fixtures, and a KORADO heated towel rail. Fresh air supply is provided by a heat recovery ventilation system.

Košíře retains a community-oriented atmosphere with abundant greenery, kindergartens, elementary schools, and high schools. The neighborhood offers cafés, restaurants, shops, a supermarket, and the Kavalírka cinema. Natural areas such as the nearby Košíře-Motol and Skalka parks are complemented by the well-maintained Klamovka Garden with a gymnasium and children's playground. Excellent transport accessibility is ensured by a tram and bus stop just one minute from the building. The bustling Anděl district is reachable in 6 minutes by car or 10 minutes by public transport.

The presentation includes visualizations.

Floor area 59.54 m², cellar.

Asking price already includes VAT at the statutory rate.



* Area of the unit according to the Civil Code. The area consists of the sum total area of the entire unit bounded by perimeter walls.



Apartment One-bedroom (2+kk)

€ 440 420 | CZK 10 700 000

59.54 m², Prague 5, Košíře, Plzeňská

Byt 19

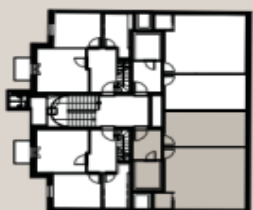
6. NP · 2+kk · 59,54 m²

6.3.1	Předsíň	5,43 m²
6.3.2	Obývací pokoj s kuchyňským koutem	28,54 m²
6.3.3	Ložnice	16,44 m²
6.3.4	Koupelna s WC	4,55 m²
6.3.5	Sklad	2,03 m²
Svislé konstrukce		2,55 m²
PODLAHOVÁ PLOCHA		59,54 m²

Pozice bytu
v rámci domu



Umístění bytu
na patře



PLZEŇSKÁ

