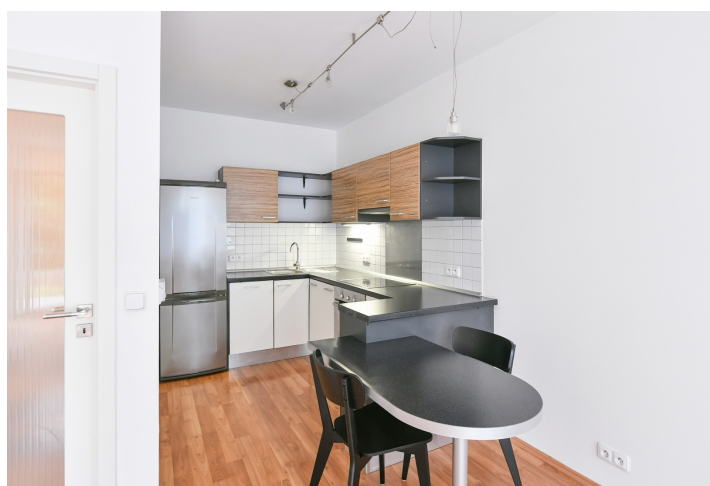




Apartment One-bedroom (2+kk)

Rented

60 m², Prague 6, Dejvice, Matějská





Apartment One-bedroom (2+kk)

Rented

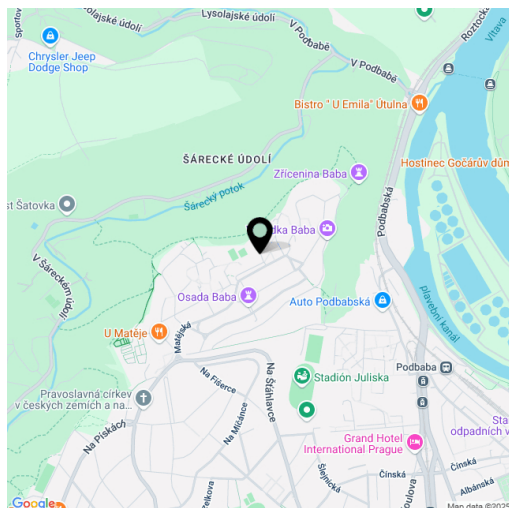
60 m², Prague 6, Dejvice, Matějská

Total area	60 m²
Garden	130 m²
Parking	-
Cellar	-
Service price	Monthly deposit for services, water, heating, and electricity: CZK 6,000.
PENB	Not required
Reference number	109306
Available from	Immediately

This semi-furnished 1-bedroom apartment with a terrace and garden (130 m²) is on the ground floor of a renovated contemporary villa with an elevator, situated in a highly sought-after Prague 6 residential neighborhood near the Šárka Valley forest park, in the "Kolonie Baba," one of the most significant and clean Functionalist residential communities in Europe. Conveniently located for the International School of Prague (ISP), the Riverside and Park Lane School, and the airport, with quick connections to the city center and a short bus ride to the Dejvická metro station with full amenities in the area.

The apartment includes a living room with a fully fitted open plan kitchen and access to the **terrace/garden**, a bedroom, a hallway with a built-in wardrobe, a bathroom (walk-in shower, toilet), and an entrance hall.

Laminate floors, tiles, automatic exterior roller blinds, central heating, underfloor heating in the bathroom, washing machine, dishwasher.



* Size of the unit according to the Housing Act.
The area consists of the sum total of the internal area of every room.