



Apartment Two-bedroom (3+1)

Ask for price

91.4 m², Bratislava II, Ružinov, Pribinova





Apartment Two-bedroom (3+1)

Ask for price

91.4 m², Bratislava II, Ružinov, Pribinova

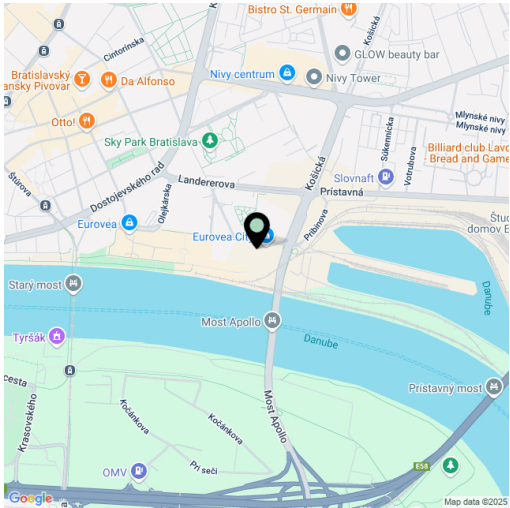
Total area	118 m²
Floor area*	91 m²
Balcony	27 m²
Parking	Yes
Garage	Yes
Cellar	Yes
PENB	A
Reference number	108929

This two-bedroom apartment for sale in the iconic Eurovea Tower skyscraper is situated on the waterfront promenade by the Danube River, in the very heart of Bratislava's downtown. It is the tallest residential building in Slovakia, combining modern urban life with comfort, elegance, and an unbeatable location.

The layout of the apartment is designed with an emphasis on comfort, space, and a modern urban lifestyle. The entrance to the apartment is via a spacious hallway, which smoothly flows into the central hall connecting all rooms. The day area of the apartment consists of a generous living room connected to the dining room and kitchen, all of which have panoramic views thanks to the **large-format windows** and access to the main **balcony**. The night part consists of two separate rooms: a master bedroom with storage space and a second bedroom. There is also a bathroom with a bathtub and toilet, and a separate guest toilet completes the comfortable interior.

The total interior floor area of the apartment is 91 m², complemented by a 27 m² spacious balcony with exceptional views. The layout separates the day and night zones. Facilities include aluminum windows, wooden floors, and **air-conditioning**.

Eurovea Tower with a central **reception** offers amazing urban amenities such as the Eurovea shopping center, cafes, restaurants, a wellness zone, banks, schools, kindergartens, and cultural institutions, all literally at your fingertips. Bike paths, jogging trails along the Danube, and private parking make this address a place that combines a dynamic city life with relaxation and proximity to green spaces.



* Area of the unit according to the Civil Code. The area consists of the sum total area of the entire unit bounded by perimeter walls.

Interior 91 m², balcony 27 m²

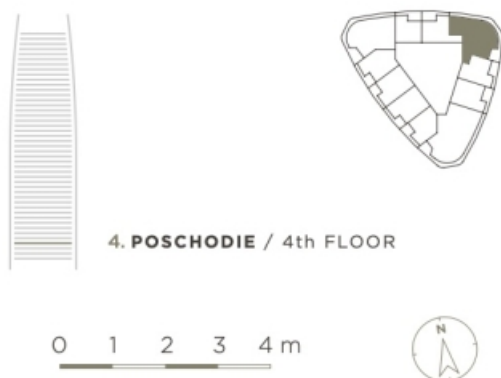
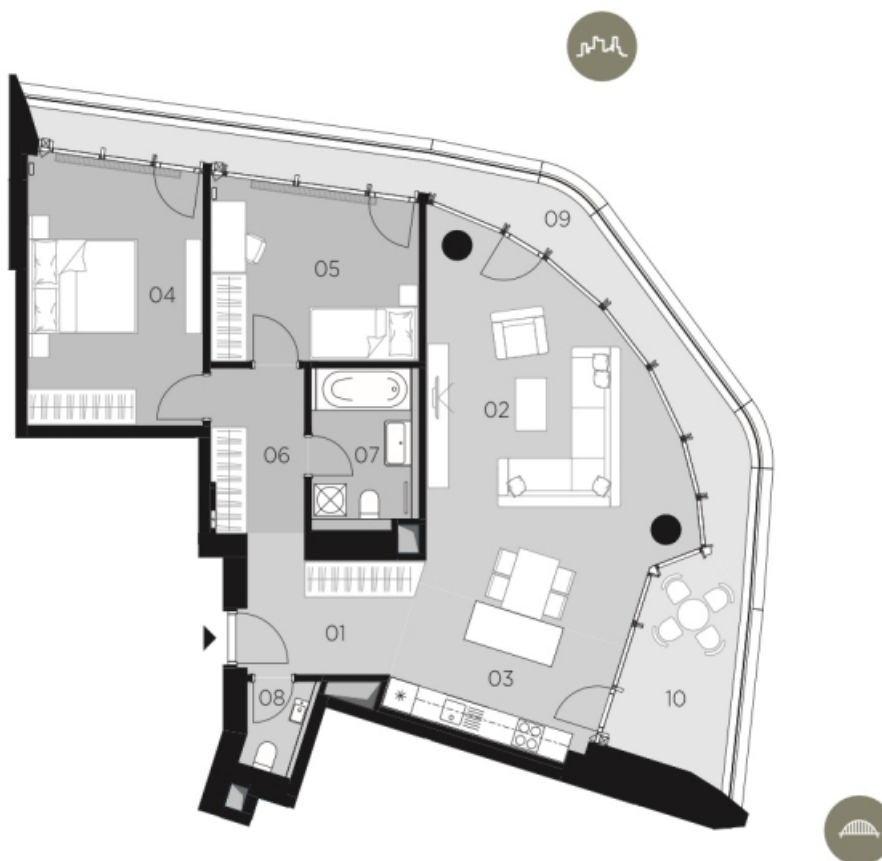


Apartment Two-bedroom (3+1)

Ask for price

91.4 m², Bratislava II, Ružinov, Pribinova

POSCHODIE FLOOR	ČÍSLO APARTMÁNU APARTMENT NUMBER	IZBY ROOMS	INTERIÉR INTERIOR	EXTERIÉR EXTERIOR	APT. 4.04 APT. 4.04
4	04	3	91,4	26,6	



EUROVEA TOWER

01	PREDSEŇ / HALL	7,4 m²
02	OBÝVACIA IZBA / LIVING ROOM	30,0 m²
03	KUCHYŇA / KITCHEN	10,3 m²
04	IZBA / ROOM	16,8 m²
05	IZBA / ROOM	13,1 m²
06	CHODBA / CORRIDOR	5,6 m²
07	KÚPEĽŇA S WC / BATHROOM + WC	6,2 m²
08	WC / WC	2,0 m²
09	BALKÓN / BALCONY	18,0 m²
10	BALKÓN / BALCONY	8,6 m²