



Apartment One-bedroom (2+1)

€ 605 998 | CZK 14 750 000

89.5 m², Prague 3, Žižkov, Čajkovského





Apartment One-bedroom (2+1)

€ 605 998 | CZK 14 750 000

89.5 m², Prague 3, Žižkov, Čajkovského

Total area	101 m²
Floor area*	90 m²
Terrace	12 m²
Parking	-
Cellar	-
PENB	D
Reference number	108825

This 100 m² air-conditioned duplex apartment is part of a classic residential building with an elevator. The brick row house stands in a convenient location in Prague 3 – Žižkov, in an area with all necessary amenities, only a 5-minute tram ride from the city center.

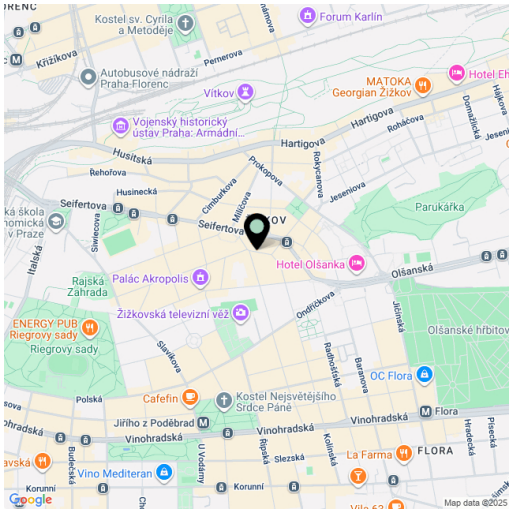
The entrance level (6th floor) consists of a large bright living room with an open plan kitchen and views of Prague, as well as a bedroom, a bathroom (with a bathtub), a separate toilet, and a hall. In the upper part of the apartment, there is a **spacious gallery** suitable for a study. From the southwest-facing terrace, there is a **nice view** dominated by the **Church of St. Prokop** and the **Žižkov Television Tower**.

The apartment was built in 2007. The interior is made more cozy by **wooden floors**, and the roof windows have wooden frames. The **Hanák** kitchen is fully equipped with built-in appliances (including an induction cooktop). The apartment is secured by a **security system**, heating is provided by a Buderus gas boiler, and **air-conditioning** ensures optimal temperature even on hot days. The building is well maintained, and the **elevator** goes up to the 7th floor.

The surroundings offer a wide selection of restaurants, cafés, bistros, shops, and services. **Sports facilities**, schools, and a tram stop with many lines are within comfortable walking distance. The journey to the city center takes only a few minutes. The area is enhanced by several parks—**Mahlerovy Sady Park** is close-by, and **Riegrovy Sady Park** or **Parukářka** are also within reach.

Floor area 89.5 m² + terrace 11.8 m², according to the owner's declaration 102 m².

* Area of the unit according to the Civil Code. The area consists of the sum total area of the entire unit bounded by perimeter walls.

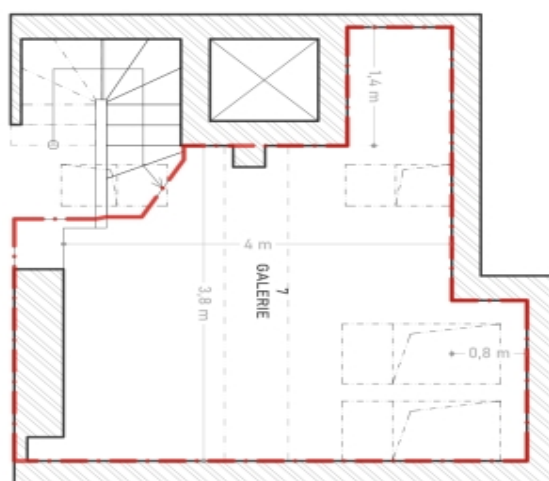
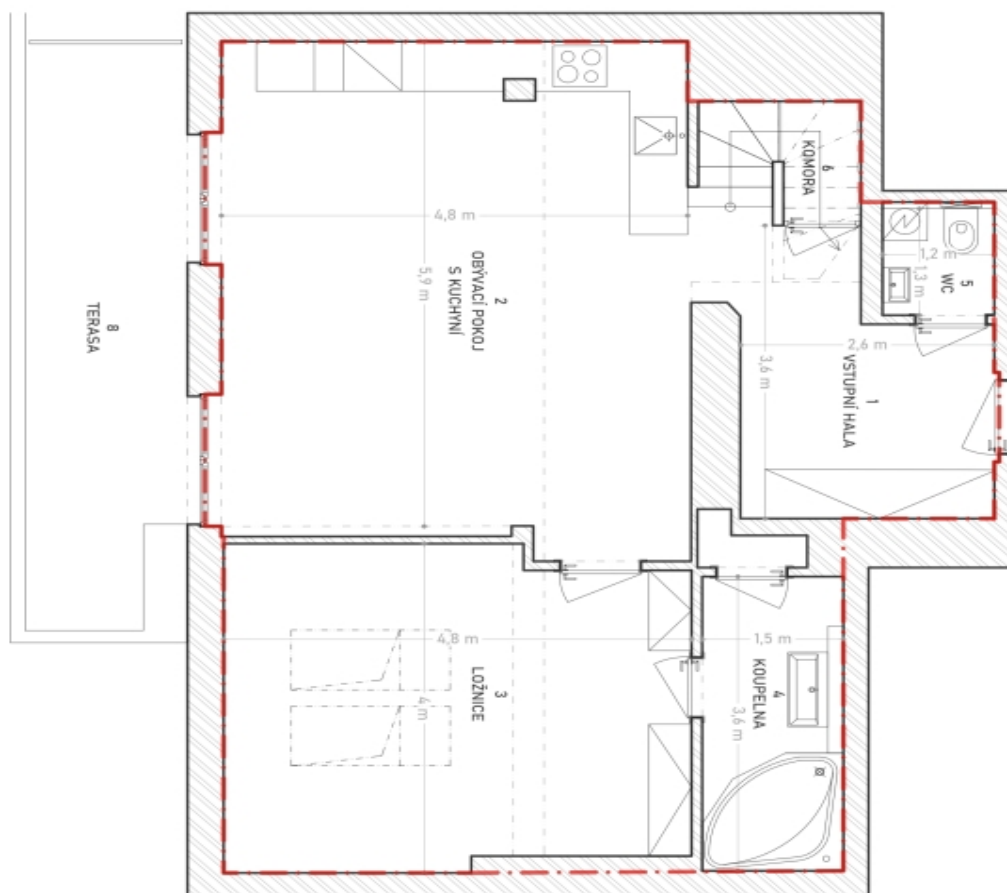




Apartment One-bedroom (2+1)

€ 605 998 | CZK 14 750 000

89.5 m², Prague 3, Žižkov, Čajkovského



VÝMĚRY MÍSTNOSTÍ	
Č. M.	POPS
1	9.5
2	29.9
3	18.3
4	5.7
5	1.6
6	1.2
7	18.0
8	84.2
TERASA	
UŽITNÁ PLOCHA + BALKON (m²)	
96.00	
POLAHOVÁ PLOCHA BYTOVÉ JEDNOTKY (m²)	
89.5	

Číslované podlažní a podlažní jednotky je stanovena podle návrhu stavebního úřadu. Všechny údaje jsou orientační a nemusí odpovídat skutečnosti. Pro více informací kontaktujte makléře.