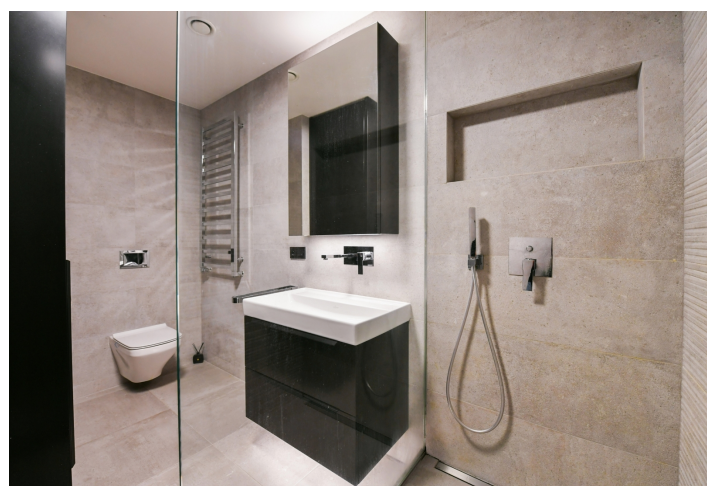
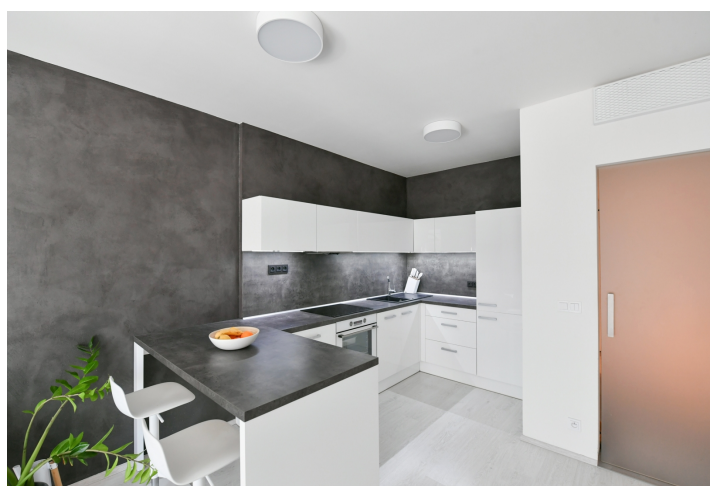




Apartment Two-bedroom (3+kk)

Rented

83.3 m², Prague 5, Stodůlky, Petržilkova





Apartment Two-bedroom (3+kk)

Rented

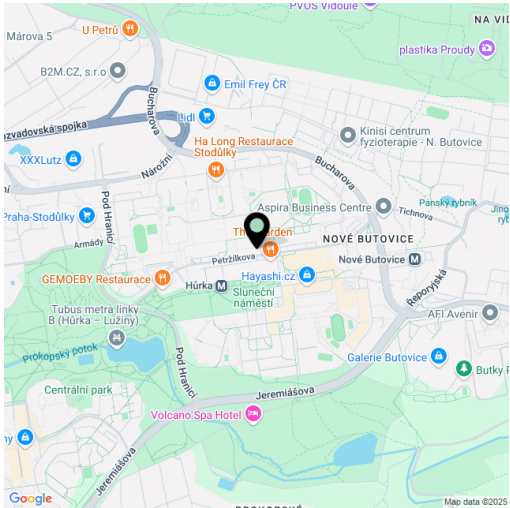
83.3 m², Prague 5, Stodůlky, Petržilkova

Total area	83 m²
Parking	Garage parking
Garage	Yes
Cellar	Yes
Service price	Monthly deposit for service charges, water and heating: CZK 5,500 . Electricity is billed separately.
PENB	B
Reference number	108639
Available from	Immediately

This is a good standard, completely refurbished, furnished 2-bedroom split-level apartment on the first floor in a contemporary gated residential project with a 24/7 manned security and a green courtyard with benches and a children's playground. Located in Stodůlky, Prague 5, in an area with quick access to the city center - just a minute walk from Nové Butovice metro station, and with full amenities near by (Nové Butovice shopping mall, medical center, schools, several business centers). Conveniently located for the German School (one short stop by metro), within walking distance of Hůrka Central Park, near the Prokopské Valley.

The lower level of the apartment includes a living room with a fully fitted open plan kitchen and a dining area, a toilet, and an entrance hall with a built-in wardrobe. The upper floor offers a bedroom with a built-in wardrobe, a study / second bedroom with a built-in wardrobe, a bathroom (walk-in shower, toilet), and a fitted **walk-in closet**.

Heat recovery ventilation, vinyl floors, tiles, ample custom made built-in storage, security entry door, automatic exterior blinds, central heating, washer / dryer, dishwasher, induction stove top, microwave oven, **cellar**, lift. A **garage parking** space is available at CZK 1,500/month.



* Area of the unit according to the Civil Code. The area consists of the sum total area of the entire unit bounded by perimeter walls.