





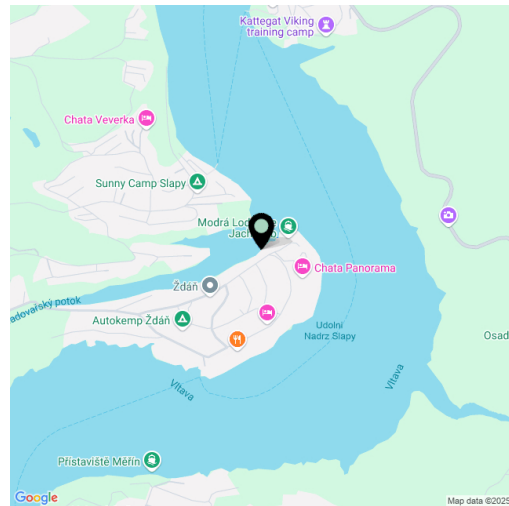


## Land

411 m<sup>2</sup>, Praha-západ, Slapy

Sold

|                  |                    |
|------------------|--------------------|
| Price per sq. m. | 5 474 CZK          |
| Total area       | 411 m <sup>2</sup> |
| Land type        | Housing            |
| Reference number | 108500             |



This northwest-facing non-buildable plot in the popular recreational area of Slapy-Ždán, adjacent to a pier with the option to rent a mooring, is located in a peaceful cove near a golf course.

The land falls under the zoning category of **private greenery** according to the proposed plan, meaning it is a **non-buildable plot** with the possibility of placing small garden structures on up to 5% of its area. Thanks to its location right by the water, it also offers the potential for placing a **houseboat**.

This sought-after area stands out for its pleasant holiday atmosphere, fresh air, and beautiful landscape. In the immediate vicinity, there is a campsite, a restaurant, a beach, a boat dock, and the Ždán marina, where sightseeing steamers and a regular ferry line connecting both sides of the reservoir make stops. Nearby, you will find the **Svatý Jan Golf Club**, as well as scenic **hiking and bike trails** winding through the stunning surrounding nature. Naturally, the location is also ideal for water sports. One of its main advantages is its **excellent accessibility**—reaching the outskirts of Prague takes less than 30 minutes. Basic amenities, such as a post office and grocery store, are available in the village of Slapy, just 2.5 km away.

Total area 411 m<sup>2</sup>.