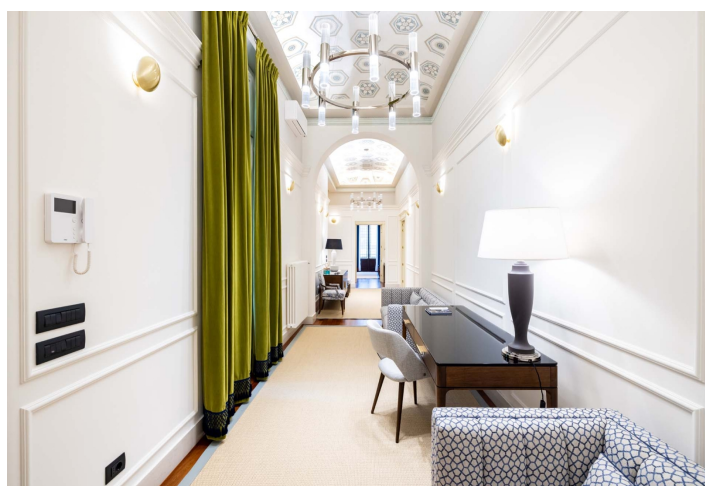




Apartment Four-bedroom (5+1)

€ 5 750 000 | CZK 139 955 000

440 m², Florence, Tuscany, Piazza del Duomo





Apartment Four-bedroom (5+1)

€ 5 750 000 | CZK 139 955 000

440 m², Florence, Tuscany, Piazza del Duomo

Total area	440 m²
Parking	-
Cellar	20 m²
PENB	E
Reference number	108264

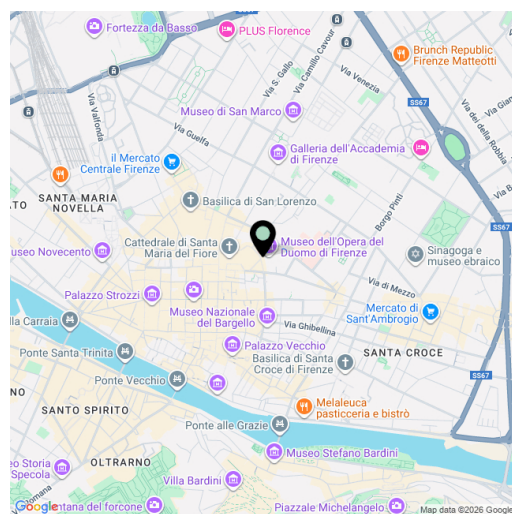
In one of the most beautiful districts of Florence, literally two steps from Piazza del Duomo, we offer a stunning 420 m² apartment, located in a late Renaissance palace from the 16th century with more recent features from the 18th century. The luxurious residence is divided into two separate units, each accessible by its own entrance and located in one of the wings.

The **south wing** consists of a hall with a dining room overlooking the first inner courtyard, a kitchen connected to another hall with an **impressive view**, a cloakroom, a laundry room, an entrance hall, a guest bathroom and 2 bedrooms with en-suite bathrooms. One of the bedrooms has a **balcony with a stunning view of the cathedral**, the other overlooks the second inner courtyard offering **peace and privacy**. The **north wing** consists of a monumental entrance with **frescoes**, a spacious living room with a dining area, a kitchen with windows to the third inner courtyard, a master bedroom with an en-suite bathroom and toilet, another bedroom, bathrooms and hallways. In front of the kitchen, a staircase leads to the mezzanine with a service bathroom and a technical room. One **balcony** is located above the **inner courtyard**, the other has a **direct view of the cathedral**.

The apartment has been recently **renovated**. The interior boasts frescoed walls, half-columns, bas-reliefs, vaulted ceilings, painted coffered ceilings, decorated wooden beams, solid wooden parquet floors. The hand-painted doors were specially made by **Tuscan craftsmen**, all windows are double-glazed, providing excellent **sound and thermal insulation**. The entire apartment is **air-conditioned** and is accessible by both stairs and **elevator**. The apartment includes a **cellar**.

The **historic center of Florence**, with its boutiques, shops, **opera houses** and numerous other **monuments**, offers all the necessary services, easily reachable on foot. Other Tuscan cities can be reached by car in less than 2 hours, the nearest airport is 10 km away, and the terminals in Bologna, Pisa, Rome and Milan are also conveniently accessible.

Floor area 440 m², cellar 20 m².



* Area of the unit according to the Civil Code. The area consists of the sum total area of the entire unit bounded by perimeter walls.