



Apartment One-bedroom (2+kk)

€ 363 038 | CZK 8 820 000

85.08 m², Prachatice, Volary





Apartment One-bedroom (2+kk)

€ 363 038 | CZK 8 820 000

85.08 m², Prachatice, Volary

Total area	94 m²
Floor area*	85 m²
Loggia	9 m²
Parking	Outdoor parking space
Cellar	-
PENB	B
Reference number	107940

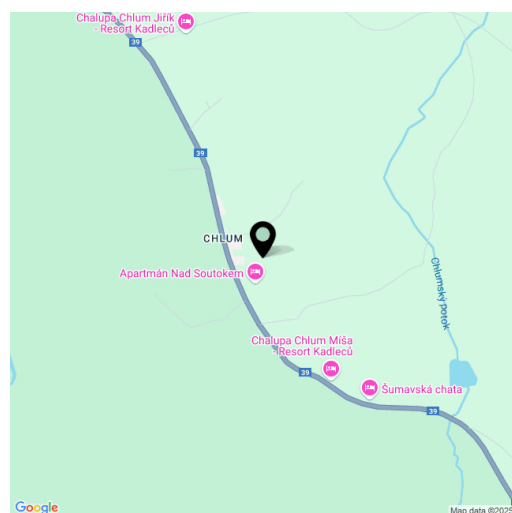
This new two-room apartment with a loggia and parking is part of the ŠUMAVSKÝ RÁJ mountain residence, offering future owners maximum privacy and top-tier technological equipment. Located just 10 minutes from Lipno, in the mystical landscape of the Šumava National Park, it provides an ideal setting for hiking, cycling, or cross-country skiing. Lovers of downhill skiing can take advantage of the Lipno or Hochficht ski resorts.

The apartment, located on the 1st floor of a mountain residence, consists of a living room with a fully equipped kitchen, a bedroom, a bathroom with a shower and an entrance hall. The living room has access to the loggia. The price also includes an outdoor parking space.

The unit is equipped with a **Loxone** smart home system, allowing remote control of heating, lighting, and blinds. Facilities include **wood-aluminum windows** with electric blinds, **high-quality vinyl floors**, underfloor heating, a custom-made kitchen, **ash wood furniture**, and high-speed fiber-optic internet. The equipment also includes a **fireplace stove** that provides warmth and creates a cozy atmosphere. Central heat pumps from **Alpha Innotec** ensure thermal comfort. Common areas are protected by a video surveillance system and include a ski/bike room and a garden with a stone fire pit.

The quiet village of **Chlum u Volary**, located at the very edge of the Šumava National Park, offers easy access to skiing in **Hochficht**, Lipno, Kvilda, or Modrava. The area also offers other recreational activities, such as cycling along the Lipno reservoir, mountain hiking, **MTB**, an indoor pool in Volary, walks to the **Mrtvý Luh** peat bog or the **Soumarský Bridge** lookout tower, and the opportunity to learn about the traditions of **Šumava glassmaking** in nearby **Lenora**. Full civic amenities are available in Volary, 6 km away, and the drive from Prague takes about 2 hours.

Floor area 85 m², loggia 9 m².



* Area of the unit according to the Civil Code. The area consists of the sum total area of the entire unit bounded by perimeter walls.



Apartment One-bedroom (2+kk)

€ 363 038 | CZK 8 820 000

85.08 m², Prachatice, Volary

Šumavský ráj

Apartmán

CHLUM

2 NP | 1st floor

2 + kk | 1 bdr

- | | | |
|---|-----------------------------|----------|
| 1 | Hala Hallway | 10,34 m² |
| 2 | Koupelna Bathroom | 6,86 m² |
| 3 | Obývací pokoj Living room | 50,10 m² |
| 4 | Ložnice Bedroom | 16,25 m² |

Užitná plocha | Usable area
Podlahová plocha | Floor area

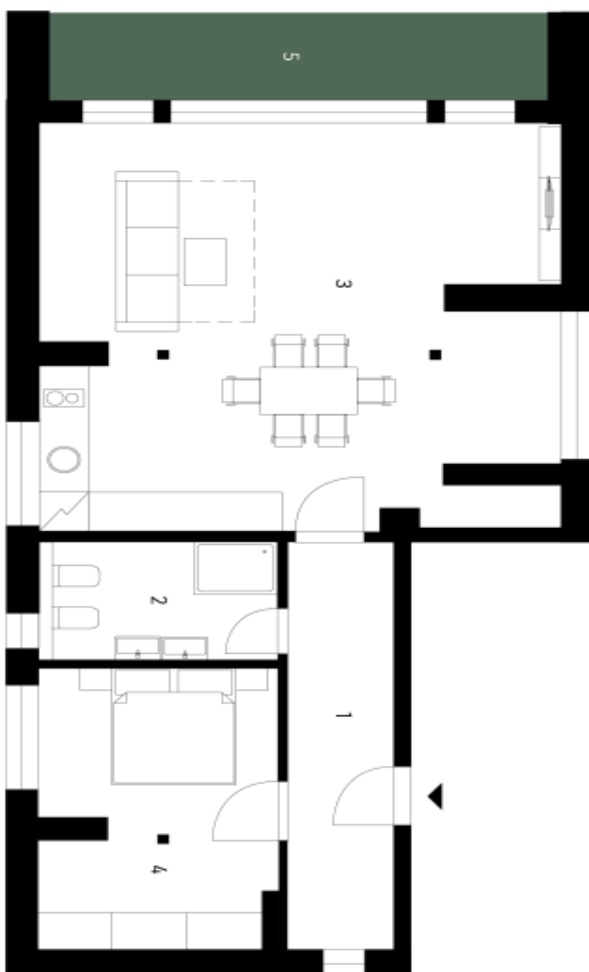
83,55 m²
85,08 m²

5
 Ložnice | Balcony | 9,00 m² |

Celková plocha | Total area

94,08 m²

Způsob výpočtu podlahové plochy je stanoven v souladu s nařízením vlády č. 386/2013 Sb.
Tento výkres byl zpracován pro marketingové účely.



svoboda&williams | CHRISTIE'S
EXKLUZIVNÍ ZASTOUPENÍ
EXCLUSIVE REPRESENTATION
INTERNATIONAL REAL ESTATE