



Apartment Three-bedroom (4+1)

Sold

86 m², Prague 9, Libeň, Čihákova



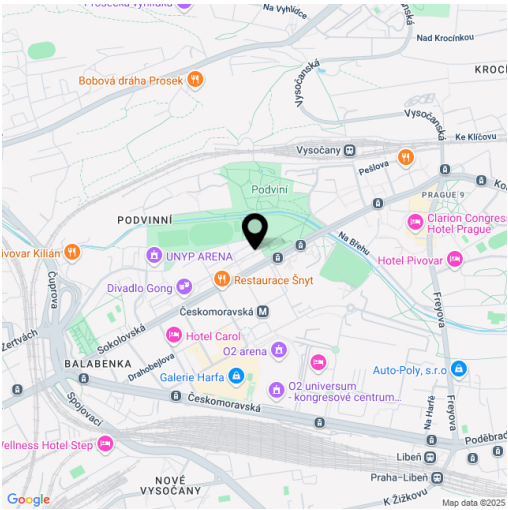


Apartment Three-bedroom (4+1)

Sold

86 m², Prague 9, Libeň, Čihákova

Total area	89 m²
Floor area*	86 m²
Balcony	3 m²
Parking	-
Cellar	Yes
PENB	G
Reference number	107875



* Size of the unit according to the Housing Act.
The area consists of the sum total of the internal area of every room.

This newly renovated three-bedroom apartment with two balconies is on the 1st floor of a well-maintained brick building with an elevator. Libeň is an attractive district full of contrasts, perfectly accessible by metro or tram. The O2 Arena, Galerie Harfa, Podviní Park, a bobsled track, a rope center, and a bike path offer a wide range of opportunities for active recreation.

The apartment consists of a living room with access to a **balcony**, a kitchen (preparation for a kitchen unit) with a pantry, three bedrooms (two of which are south-facing), a bathroom with a shower, a separate toilet, and a hallway with a second balcony. All rooms are non-walkthrough. The purchase price also includes a **cellar storage unit**.

The apartment features plastic windows and vinyl flooring in a herringbone parquet design. Heating is provided by radiators connected to a central exchanger. The building, dating back to the 1940s, has been continuously renovated and includes an **elevator** and a shared **bike storage room**.

Libeň has a unique atmosphere, blending hidden village-like corners, industrial architecture, and elegant 1930s villas. The area offers excellent transport connections via the B line metro and trams, and caters to an **active lifestyle**. Nearby, you'll find the O2 Arena, Galerie Harfa shopping mall, the expansive Podviní Park with a rope center and bobsled track, a sports hall, and a rugby field. Nature lovers will appreciate the bike and nature trail along the Rokytka Stream, just 100 meters from the building. The surrounding amenities also include a medical center, numerous restaurants and cafés, kindergartens, elementary schools, and a high school.

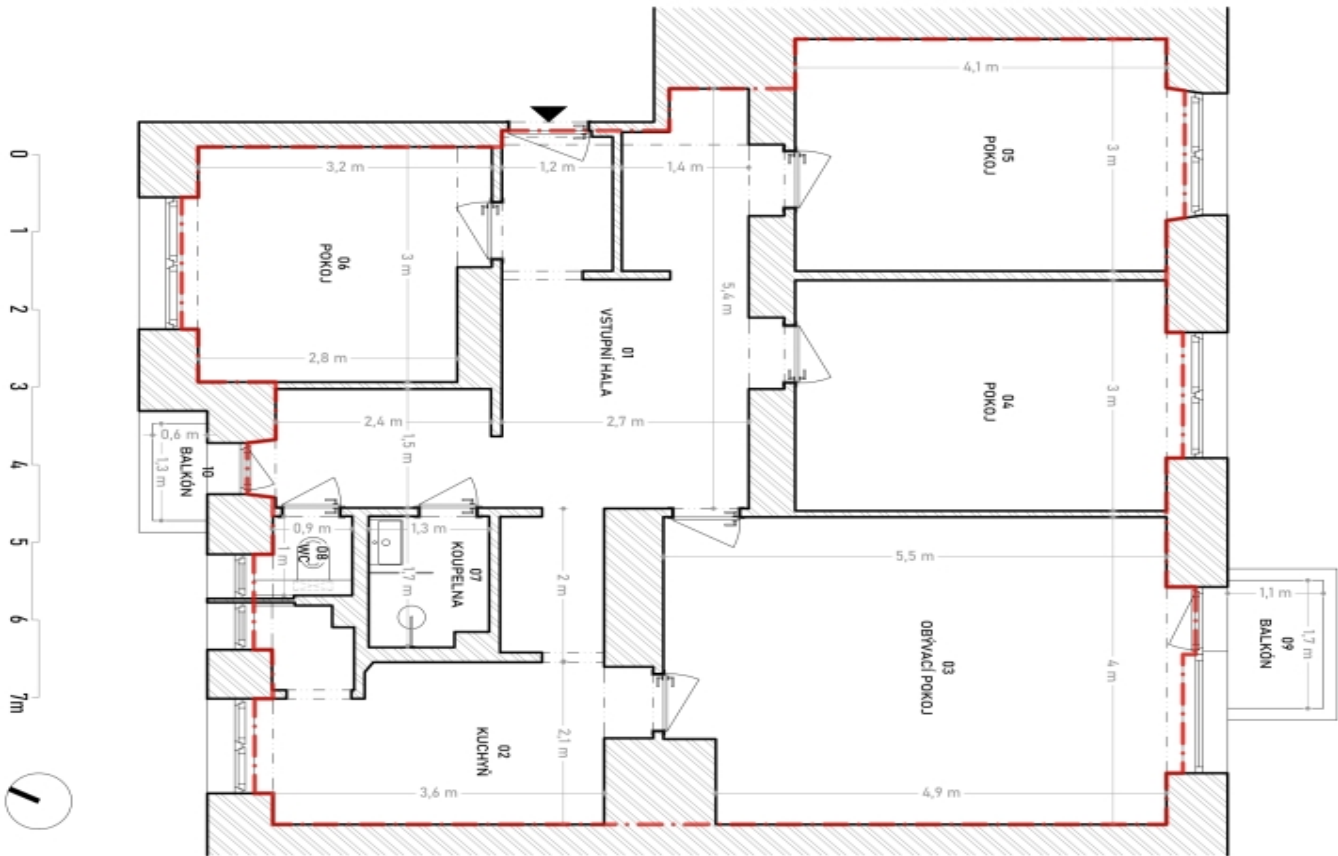
Floor area 89 m², balconies 3 m² and 1.8 m², cellar.



Apartment Three-bedroom (4+1)

86 m², Prague 9, Libeň, Čihákova

Sold



VÝMĚRY MÍSTNOSTÍ	
Č. M.	POPS
01	VSTUPNÍ HALA
02	KUCHYŇ
03	OBÝVACÍ POKOJ
04	POKOJ
05	POKOJ
06	POKOJ
07	KOUPELNA
08	WC
09	BALKÓN
10	BALKÓN
ÚJTNÁ PLOCHA BYTOVÉ JEDNOTKY (m²)	
92	
PODLAHOVÁ PLOCHA BYTOVÉ JEDNOTKY (m²)	
97.2	

Odkaz na podlažní plán bytové jednotky je k dispozici na stránce 36/2023 36. 3. 3
Účel: plán bytové jednotky je k dispozici na stránce 36/2023 36. 3. 3

HRANICE PODLAHOVÉ PLOCHY B.I., N.B.I.
ZOBŮŽENÍ STĚN