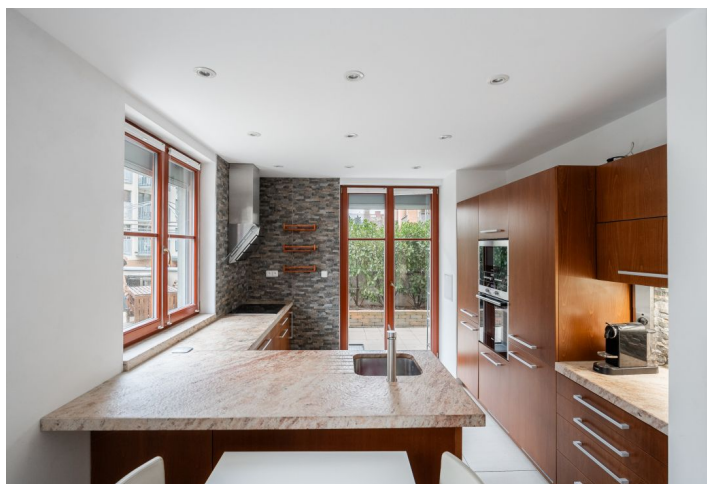




## Apartment Two-bedroom (3+kk)

Rented

71.21 m<sup>2</sup>, Prague 6, Dejvice, Lindleyova





## Apartment Two-bedroom (3+kk)

Rented

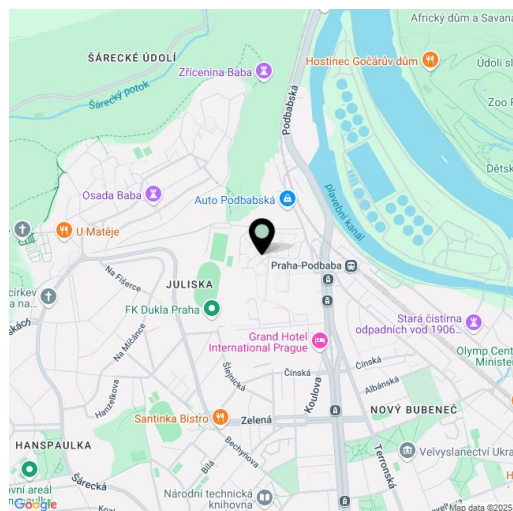
71.21 m<sup>2</sup>, Prague 6, Dejvice, Lindleyova

Total area	71 m <sup>2</sup>
Front garden	100 m <sup>2</sup>
Parking	Garage parking
Garage	Yes
Cellar	Yes
Service price	Monthly deposit for services, water, heating, and electricity CZK 8,000.
PENB	C
Reference number	107806
Available from	Immediately

Benefiting from a garden, this furnished 2-bathroom apartment on the upper ground floor of a residential project with underground parking and plenty of greenery is nicely located in a pretty natural park-like area under the Baba neighborhood, with full amenities in close vicinity. Within quick reach of the Vltava riverbank, Šárka Valley, and Stromovka Park, a few short tram/bus stops from the Dejvická metro station (5 min. to the city center). Conveniently located for the airport and numerous Prague 6 international schools.

The interior features a living room with a fully fitted open plan kitchen and dining area, a master bedroom with a built-in wardrobe and an en-suite bathroom (bathtub, toilet), a bedroom with a built-in wardrobe, a family bathroom (walk-in shower, bidet, toilet), a utility room, and an entrance hall with a built-in wardrobe. The **garden** is accessible from the living room and one bedroom.

**Hardwood floors**, tiles, automatic exterior roller blinds, pleated blinds, automatic awning, central heating, Siemens appliances, washer, dryer, Bosch dishwasher, induction stove top, microwave oven, video entry phone, **cellar**, garden house, lawn mower, automatic irrigation, misting system, security cameras in the building. A **garage parking** space is included.



\* Area of the unit according to the Civil Code. The area consists of the sum total area of the entire unit bounded by perimeter walls.